

# Fair Shortened By Torrential Rains



DAVID LESSER'S 900-pound steer took the reserve champion title at the Chelsea Community Fair last week. The steer was sold to the Wolverine Bar for 90 cents a pound. Pictured with Lesser (right) is the new owner, Joe Merkel.

## Grounds Flooded

The 1975 Chelsea Community Fair ended with a rainstorm, one day early, preventing all the fanfare and delight that goes along with the Saturday fair parade, Queen's Day, the horse show and the pony pulling contest.

Despite the cancellations, parade lovers turned out in rain gear, in cars and under the shelter of shopkeeper's awnings to see what remained of the 1975 Fair parade.

Arriving at the fairgrounds, those who dared to venture out were met with massive pools of water and a lot of mud. Fair board president Paul Frisinger wasn't smiling, but he remarked that "we did as well in four days this year as we did in five last year." Frisinger reported that there were record crowds on the grounds daily and that the grandstands were filled for every event. "Even the 500 extra seats did not take care of the crowds," he said. Fair secretary, Ruth Leach, said that people were bringing in extra

bleachers for the demolition derby held Thursday evening. "I don't know where they got them, but there were still people standing."

Earl Heller, executive vice-president, estimated that this year's crowd had increased by 15 percent.

However, everyone agreed that Saturday was always a big day for the fair, especially for the amusements.

And while no one cared to speculate on the losses, they cheered themselves saying they were no where as bad off as the state fair.

"We had to take on added expenses for the weather," Mrs. Leach said. The Fair Board brought in nine loads of gravel and wood chips for teated stalls where livestock were to be displayed.

The fair was open Sunday and Monday. Exhibitors were released Saturday; however, some chose to remain. The Ingalls Amusement Co. offered their games and rides both days.



GRAND CHAMPION: This 980-pound steer the Chelsea fairgrounds. The steer was purchased owned by Duane Trinkle (right) brought \$1.35 a pound at the livestock sale held last Wednesday on are Mr. and Mrs. Lloyd Bridges.

## WEATHER

	Min.	Max.	Precip.
Wednesday, Aug. 27	62	81	0.16
Thursday, Aug. 28	67	81	0.00
Friday, Aug. 29	56	82	0.65
Saturday, Aug. 30	68	80	1.73
Sunday, Aug. 31	68	80	2.07
Monday, Sept. 1	67	79	1.04
Tuesday, Sept. 2	61	72	0.01

# The Chelsea Standard

## QUOTE

"We, by our suffering, learn to prize our bliss."  
—Dryden.

ONE HUNDRED-SIXTH YEAR—No. 12

12 Pages This Week

Plus 4-Page Supplement

CHELSEA, MICHIGAN, THURSDAY, SEPTEMBER 4, 1975

15c per copy

SUBSCRIPTION: \$6.00 PER YEAR

## Tractor Pull Rained Out Friday Night

18 entries in the heavyweight division of the tractor pull were rained out Friday evening, as a torrent of rain hit the Chelsea fairgrounds at 10 p.m., preventing any further competition. Aside from the disappointment of those who remained to pull, this is the first time the ever-popular event has ended earlier than the wee hours of the next morning.

In the heavyweight division, those tractors up to 9,000 pounds, Ted Wheeler and David Ruhlig tied for first place, pulling 200 percent of their weight; Harold Haussler took third; Roger Ottoman, fourth and John Bihlmeyer, fifth.

Tractors weighing 6,000 to 9,000 pounds placed Paul Zahn in first place followed by Dale Gensley, second, Harold Haussler, third; Mark Weidmeyer, fourth and Ralph Diuble, fifth.

Winners whose tractors weighed from 4,001 to 6,000 pounds were first place Vick Mann; second place, Jim Hartman; Neil Weidmeyer, third place; Harry Huehl fourth and Dan Schaible, fifth.

In the lightweight class John Weidmeyer took first place, followed by Floyd Riethmiller in second; Steve Kuebler, third; Richard Ganshom, fourth, and Ken McCalla, fifth.

## You're Right - It Has Been A Wet August

August, usually considered to be one of the most beautiful summer months; lots of sunshine, little rain and moderate temperatures has proved the exception this year in every way, but especially with respect to the amount of rainfall received in the Chelsea area.

According to Melvin Leach, Chelsea Wastewater Treatment Superintendent, the area's total rainfall for the month was 9.74 inches. Leach said that Chelsea's average for August is 2 1/2 inches. "Quite a jump," he added.

While he is not certain that this August's rainfall has set an all-time record, the only time Leach remembers a great deal of rain in the 15 years he has been with the department was in August of 1967. "There may have been more then," he remarked.

For fairgoers and the curious, the amount of rain that fell in the area from 10 o'clock Friday evening through Sunday morning at 8 o'clock was 5 1/2 inches; "by far more than we've had for (that kind of time period) since 1940," Leach declared.

## Rec Council Director Quits Position

Tom Balistrere, Director of the Chelsea Recreation Council and the summer "Earn, Learn, and Play" program, has submitted a letter of resignation to the council. According to Dave Lukasiak, vice-president of the Recreation Council, Balistrere's reasons for leaving the post were cited as "personal" and "wanting to spend more time with (his) family."

The Rec Council met last night (Wednesday) to act on Balistrere's letter. If accepted his resignation will be effective tomorrow, Friday, Sept. 5. When asked if she thought his resignation would be accepted by the council, President Ann Schaffner, said she would not like to speak for the entire council.

However, Lukasiak said he expected the resignation to be accepted. Balistrere has been director of the council for two years.

## Teachers, Board Reach Tentative Work Agreement

Chelsea schools started on time, despite the fact that ratification on a new teacher's contract is not scheduled until next week.

Chelsea's 135 teachers and the Board of Education reached a tentative agreement Saturday evening on a one-year contract. The contract calls for an experience increment in addition to a five percent increase at the bottom of the salary schedule. The percentage will move up as the teacher moves up in the salary schedule.

Chelsea teachers with a master's degree and 10 year's experience will receive a pay increase of \$753 under the new contract.



FIRST PLACE in the Adult Division of the Fair Parade went to Ralph Trinkle, Don Laier and Ethel and Erwin Haist for their entry "Beverly Hillbillies." The group who call themselves the Lima Center Group were just putting the finishing

touches on their float last Saturday as the judges were inspecting it. Pictured here is the second half of the prize winning float. The pick-up truck pulling the float was also decorated with chickens, goat, calves and pigs.



ALL SMILES: Despite Saturday's downpour, these lovely young ladies from the CHS class of Nancy Hepburn, sits atop the float, (far right). '76 are all smiles as they ride their prize-winning

## Abbreviated Fair Parade Held Saturday Despite Downpour

"Rain, rain go away, come again some other day." The verse, while trite, was probably silently chanted in the heads of numerous fairgoers, exhibitors and parade marchers Saturday while waiting for the heavens to clear and the sun to shine in order that they might get on with the day that usually proves to be the climax of the Chelsea Community Fair.

While dressed in foul weather gear, hoping for the rain to subside, Chief Jim Gaken, at the Chelsea Fire Hall, remarked, "this is the first time this has happened

since we took over the parade in 1966." Gaken added that it had rained once before. "We made a decision to hold the parade up for an hour. We were lucky and the weather cleared."

Last Saturday, the fire department, and for that matter anyone else who planned a day at the fair were not so lucky. It seemed nothing would stop the rain, and nothing did.

However, the float makers were determined to march. They simply covered their floats in plastic bags and sheets in an effort to preserve

them for the judging, and transported them to the Chelsea Fire Hall where they and their floats, along with the Chelsea High School marching band, the Fire Department personnel, the Dexter Vintage Vehicle Club, among numerous observers, took shelter.

The floats were slowly uncovered, paper-napkin flowers were fluffed, pretty girls, young boys and girls and older folks, somewhat daunted by the weather boarded their floats for the judging.

A total of 10 floats assembled (Continued on page three)

## Champ Steer Brings \$1.35 lb. At Fair Auction

While far from the "whopping" \$4.00 per pound paid for his Grand Champion Lamb last year at the 1974 Chelsea Community Fair, Steve Grau still took the Grand Champion title for his 118-pound animal and sold it to Michigan Livestock for \$1.80 a pound.

Other prices paid for animals during Wednesday evening's livestock sale would be considered "low" to the shopper's eye and probably a good buy to the buyer's.

Matt Grau's Reserve Champion Lamb sold to Robert Thornton for \$1.50 per pound; while Kirk Van Natter sold his champion pen, total of 326 pounds to McCalla Feeds for 60 cents per pound. The reserve champion pen, owned by Matt Grau sold for 75 cents a pound to G. E. Wacker; total weight of the pen was 208 pounds.

The top hog price was paid to Doug Welshans for his reserve champion of 225 pounds. Welshans sold the animal to Klink Excavating for \$1.05 a pound. The Grand Champion individual hog brought \$1 per pound and was sold to Washenaw Crop Service; weight, 213 pounds.

Among the pens of hogs, Michigan Livestock paid 70 cents a pound to Gordon McCalla for his grand champion pen with a total weight of 612 pounds. Wolverine Bar paid 80 cents a pound to Scott Powers for his reserve champion pen, 631 pounds.

The Grand Champion steer owned by Duane Trinkle was bought by Lloyd Bridges Chevrolet for \$1.35 a pound. The animal weighed 980 pounds. David Lesser's 900-pound reserve champion steer was sold to the Wolverine Bar for 90 cents a pound.

Other steer owners, the weight, price per pound and buyers are as follows: Kirk Van Natter, 1,025 pounds, 65 cents to Lane Animal Hospital; Bruce Breuninger, 920 pounds, 70 cents to Chelsea State Bank; Kathy Trinkle, 1,025 pounds, 75 cents to Kuesch and Flintoft; Terri Bradbury, 945 pounds, 65 cents, to Dr. Flynn; Pat Quigley, 970 pounds, 75 cents per pound, to Farmers' Supply; Margery Trinkle, 950 pounds, 70 cents, to Manchester Locker.

David Frame, 985 pounds, 65 cents to Klump Bros. Gravel; Dan Trinkle, 945 pounds, 65 cents to Chelsea Lumber; Don Trinkle, 1,020, 70 cents, to Chelsea Milling; Melanie Schneider, 825 pounds, 70 cents to Heydlauff's; Terri Quigley, 970 pounds, 75 cents, to Inverness Inn; Mark Lesser, 885 pounds, 75 cents to Chelsea Drug; Dan Grau, 1,035 pounds, 70 cents to Ann Arbor Federal Savings; Erwin Herrst, 945 pounds, 65 cents to State Farm Insurance; Howard Sias, 970 pounds, 65 cents to Chelsea Community Fair; Gary Thornton, 900 pounds, 60 cents to Jiffy Market; Rodney Schneider, 1,015 pounds, 60 cents, to Wahl Oil Co.; Rick Poljan, 890 pounds, 60 cents to Farmers' Supply; David Heydlauff,

965 pounds, 60 cents to Thompson's Pizzeria; Phil Frame, 885 pounds 55 cents to Chelsea Milling; Bill Quigley, 1,005 pounds, 60 cents to Inverness Inn; Butch Gross, 840 pounds, 55 cents to Howell Livestock; Darroll Trinkle, 960 pounds, 70 cents to Streull Construction; Jeff Haist, 915 pounds, 60 cents Otto Honeggers; Janis Hopkins, 1,040 pounds, 55 cents, to North Lake Store; and Sue Heydlauff, 975 pounds, 60 cents to Lloyd Bridges Chevrolet.

Among the hogs, prices were paid as follows; to Doug Welshans, pen of three, 435 pounds, 75 cents to McCalla Feed Service; Karen McCalla's pen of four, 413 pounds; Kirk Feigel's pen of five, 742 pounds, to Michigan Livestock for 70 cents; and Duane Feigel's pen of six to John Mancer for 70 cents 704 pounds.

Other lamb prices were paid as follows: Chris Grau, 107 pounds, 80 cents, to Ann Arbor Federal Savings; Aric Van Natter, 128 pounds, 75 cents to Darla Bait Shop; Steve Grau, 199 pounds, 75 cents to Frisinger Realty; Ron Stoffer, 278 pounds, 70 cents, to Wilbert Trinkle & Sons; Pam Stoffer, 278 pounds, 65 cents, to Chelsea State Bank; Cheryl Bareis, 125 pounds, 85 cents to Wolverine Bar; Mary Kay Poljan, 91 pounds, 80 cents, to Diuble Feeds; Marty Heller, 88 pounds, \$1.05, to Michigan Livestock; Becky Gross, 270 pounds, 65 cents, to Harold Trinkle & Sons; Butch Gross, 252 pounds, 60 cents, to Michigan Livestock; Sally Diuble, 85 pounds, 75 cents, to Burgett; David Diuble, 88 pounds, 75 cents to Washenaw Crop Service; and Amy Wolfgang, 85 pounds, 85 cents, Ann Arbor Federal Savings.

## Two Trailers, Barn Burn

After months of inactivity, the Chelsea Volunteer Fire Department was called to put out two fires in the past week.

Chief Jim Gaken reported that the department, together with the Grass Lake Fire Department, was called to the Clear Lake Mobile Home Park, 1500 Clear Lake Rd., Aug. 27 where a trailer belonging to Lloyd Eddy was aflame. According to Gaken, the fire erupted in the kitchen and spread to other living areas in the trailer. The home was completely destroyed. Gaken added that the flames engulfed a trailer belonging to Eddy's neighbor, Ernie Carpenter. The Carpenter trailer suffered extensive damage and is for all purposes "destroyed," he said.

Late Saturday evening, Aug. 30 the department was called to 19080 Ivy Rd., where a barn on property belonging to Doug Liebeck was (Continued on page six)

## Bicentennial Commission Planning Celebrations

"The national American Revolution Bicentennial slated for celebration next year has been creating waves around our country for the past few months," said Rolly Spaulding when discussing the Western Washtenaw County Bicentennial Commission's plans for the area celebration to be held in '76. Spaulding continued, "We Chelsea folks have been thinking and planning along the lines of what can we do, what part can we play locally."

Because the celebration is a national program efforts are being made to filter it down through the states to the local governmental bodies and into the homes of everyone. And as Spaulding remarked, "It makes sense to start a 'good neighbor policy' that would co-ordinate all our many activities and projects with our surrounding villages and cities." All of which adds up to the reason a Western Washtenaw County Bicentennial Commission was formed. The commission consists of 17 townships which encompass the four towns of Saline, Manchester, Chelsea and Dexter.

Following many hours of meet-

ings and planning an "America '76" celebration will become an actuality.

To date, the WWCBC is incorporated under the co-chairmanships of Leonard Kitchen, Dexter attorney (a Chelseaite via purchase of the George Frisinger farm south of Chelsea) and Spaulding whose claim to fame stems from Chelsea's 125th celebration in 1959.

The four towns have formed steering committees appointed by members to the central commission. The group has signed a contract with the Rogers Co. of Fostoria, O. which in the past has assisted with celebrations in Chelsea, Saline and Dexter's highly successful sesquicentennial.

Four individual area celebrations will take place through out the bicentennial year, each reflecting the village or town's image, but with an eye toward over-all co-ordination of the festivities by the joint central commission.

The Rogers Co. will provide an in-resident full-time professional for a period of 13 weeks who will work together with other producers and co-ordinators for several weeks (Continued on page six)

## Antique Tractor Pull Draws Many Entries

Oldies, but goodies. Antique tractors that can still pull their weight and then some. While not quite antiques, a number of drivers and their tractors of pre-1940 vintage showed up on the Chelsea fairgrounds Thursday morning for the second annual antique tractor pull. Such a success with 18 entries in 1974 that Paul Bollinger, director and superintendent of the event decided to hold it again. In the lightweight division Kim

Brady of Dearborn took first place; Robert Yuhasz of Manchester, second; Rosemary Klink of Manchester took third, Tim John of Manchester, fourth; Chelseaite, Albert Hatley took fifth place.

Among the heavyweight vehicles Robert Pyle of Manchester took first, Don Bollinger of Chelsea, second; Floyd Riethmiller of Grass Lake, third; Don Murray of Milan, fourth; and Paul Wenk of Chelsea, fifth.



**Established 1871**  
**The Chelsea Standard**  
 Telephone 475-1371

Excellence Award By Michigan Press Association  
 1951-1952-1960-1961-1962-1963-1966

Walter P. Leonard, Editor and Publisher

Published every Thursday morning at 300 North Main Street, Chelsea, Mich. 48118, and second class postage paid at Chelsea, Mich., under the Act of March 3, 1979.

Subscription Rates (Payable in Advance)

In Michigan:	Outside Michigan:
One Year ..... \$6.00	One Year ..... \$8.50
Six Months ..... \$3.50	Six Months ..... \$5.00
Single Copies ..... \$ .20	Single Copies ..... \$ .25

**NATIONAL NEWSPAPER**  
 Association - Founded 1906

National Advertising Representative:  
 MICHIGAN NEWSPAPERS, INC.  
 257 Michigan Ave.  
 East Lansing, Mich. 48823

## Uncle Lew from Lima Says:

DEAR MISTER EDITOR:

Zeke Grubb was the first one at the country store Saturday night, and he was quick to tell how come. Things were running a little off key around the house on account his old neighbor's girl was getting married and his old lady had took it on herself to help with the partying and arranging. Zeke said everything at home got a result like he had caught the cat's tail in a door, so he got the idea the less they was of him around the house the better.

Practical speaking, allowed Zeke, nothing invented by God or man can test a woman's organizing ability and a man's patience like a

## Howell Livestock Auction

Starts 1 p.m. Every Monday  
 Myron 677-9941

The Wise Owl Sows Ship to Howell  
 Phone 546-2470. Bim Franklin

Market Report for Sept. 1

## CATTLE

Bulk Cattle—Choice Steers, \$47 to \$49  
 Few High Choice Steers, \$49 to \$50  
 Calf-Choice Heifers, \$30 to \$40  
 Few Holstein Steers, \$30 to \$40  
 Ut-Slt., \$29 and down.

## COWS

Heifer Cows, \$26 to \$28  
 Ut-Commercial, \$26 to \$28  
 Canner-Cutter, \$15 to \$21  
 Fat Beef Cows, \$18 to \$22

## BULLS

Heavy Bologna, \$25 to \$29  
 Light and Coghon, \$24 and down.

## FEEDERS

400-500 lb. Good-Choice Steers, \$24 to \$26  
 500-600 lb. Good-Choice Steers, \$26 to \$28  
 600-700 lb. Good-Choice Heifers, \$18 to \$20  
 700-800 lb. Holstein Steers, \$15 to \$20  
 800-900 lb. Holstein Steers, \$20 to \$24

## CALVES

Prime, \$45 to \$50  
 Good-Choice, \$30 to \$40  
 Heavy Deacons, \$20 to \$25  
 Cull & Med., \$10 to \$15  
 Calves going back to farms sold up to \$40

## SHEEP

Woolled Slaughter Lambs:  
 Choice-Prime, \$40 to \$44  
 Good-Utility, \$35 to \$40  
 Slaughter Ewes, \$8 to \$14  
 Feeder Lambs, All Weights, \$32 to \$36

## HOGS

220 to 240 lbs., No. 1, \$60.20 to \$60.50  
 240 to 260 lbs., No. 2, \$58 to \$60  
 Heavy Hogs, 240 lbs. up, \$55 to \$58  
 Light Hogs, 200 lbs. and down, \$50 to \$56

## Ducks

Fancy Light, \$55 to \$58.50  
 200-250 lb., \$52 to \$55  
 600 lb. and up, \$49 to \$52

## Bears and Stags

All Weights, \$44.50 to \$53.50

## Feeder Pigs

Per Head, \$30 to \$58  
 Pst. 40 lb. pigs, \$35 to \$44

## HAY

1st Cutting, per bale, \$9c to \$1.00  
 2nd Cutting, per bale, \$1.00 to \$1.30

## STRAW

Per Bale, 50c to 60c

## COWS

Tested Dairy Cows, \$200 to \$400  
 Tested Beef Type Cows, \$150 to \$250

## WASHTENAW COMMUNITY COLLEGE and CHELSEA PUBLIC SCHOOLS

### Offer Classes at Chelsea High School

FALL SEMESTER 1975 - CLASSES BEGIN MONDAY, SEPT. 8, 1975  
 REGISTRATION 6:30-7:00 p.m. PRECEDING FIRST CLASSTIME ON SCHEDULED DAY  
 REGISTRATION ALSO ACCEPTED AT HURON RIVER CAMPUS, ANN ARBOR  
 FOR FURTHER INFORMATION CALL 971-6300 - EXT. 423 or 453

COURSE NUMBER	COURSE TITLE	PREREQUISITE	CREDIT HRS.	SEC.	NO.	DAYS	HOURS
ACC 001	FUND. OF ACCOUNTING	NON-MAJORS	3	055	THURS.	7-10 p.m.	
ART 101	DWG. & PAINTING		3	055	WED.	7-10 p.m.	
BPR 101	BLUEPRINT READING		3	055	TUES.	7-10 p.m.	
EC 211	PRIN. OF ECONOMICS		3	055	TUES.	7-10 p.m.	
ENG 111	ENGLISH COMP.		3	055	WED.	7-10 p.m.	
ENG 160	INTRO. TO LITERATURE		3	055	TUES.	7-10 p.m.	
ENG 270	CREATIVE WRITING		3	055	THURS.	7-10 p.m.	
GR 111	BUSINESS LAW		3	055	MON.	7-10 p.m.	
HST 101	WESTERN CIV. TO 1600		3	055	THURS.	7-10 p.m.	
MTH 089	BASIC MATH		3	055	WED.	7-10 p.m.	
MTH 090	FUND. OCCUPATIONAL MATH	MTH 039	3	055	WED.	7-10 p.m.	
MTH 097A	INTRODUCTORY ALGEBRA	MTH 039	3	055	WED.	7-10 p.m.	
MTH 097B	INTRODUCTORY ALGEBRA	MTH 097A	3	055	WED.	7-10 p.m.	
MTH 169A	INTERMED. ALGEBRA	MTH 097	3	055	WED.	7-10 p.m.	
MTH 169B	INTERMED. ALGEBRA	MTH 169A	3	055	WED.	7-10 p.m.	
MTH 177	TRIGONOMETRY	MTH 097	3	055	WED.	7-10 p.m.	
MTH 179	PRECALCULUS	MTH 169	4	055	WED.	7-10 p.m.	
MUS 160	MUSIC APPRECIATION		3	055	THURS.	7-10 p.m.	
PSY 100	INTRO. PSYCHOLOGY		3	055	THURS.	7-10 p.m.	
PSY 150	INDUSTRIAL PSYCHOLOGY		3	055	WED.	7-10 p.m.	
SCI 100	MEDICAL TERMINOLOGY		2	055	MON.	7-9 p.m.	
SCI 200	MACHINE SHORTHAND		2	055	TUES.	6-9 p.m.	
SCI 300	FUND. OF SPEAKING		3	055	MON.	7-10 p.m.	

1st year course/machine deposit required. \$12.50 per credit hour

## MICHIGAN MIRROR

By Elmer F. White, Secretary, Michigan Press Association

**Death???**  
 Capital punishment—which Michigan abolished more than 125 years ago—may be back in the news when lawmakers return to Lansing this fall.

Rep. Richard Fessler, R-Union Lake, has introduced a resolution that would, if approved by a two-thirds margin in both House and Senate, put the question of restoring the death penalty in Michigan on the ballot next year.

The penalty would be applied only in cases of first-degree murder.

"There has been an increasing chorus of voices in Michigan calling for reinstatement of the death penalty," Fessler says.

"Some want it as a deterrent to violent crime. Some view it as a way to make sure that the public is protected from dangerous criminals. Whatever people's reasons,"

he says, "it's time the people of Michigan have a chance to express themselves on capital punishment."

Rep. Kirby Holmes, R-Utica, tried that route, seeking a public vote on capital punishment, a couple of years back. He tried to collect enough signatures to put the question on the ballot after fellow lawmakers failed to give him the support necessary to make any progress in the House.

Holmes spoke optimistically at first about the signature-collecting process, but eventually gave up the project when it became evident his forces wouldn't be able to get enough names.

Now, Fessler says, "people are fed up with first-degree murderers being released to kill again before they have served even a minimum sentence."

He points also to recent action

by the Michigan Commission on Criminal Justice, which voted 24-17 against seeking to amend the state constitution to permit the death penalty.

"The fact that the commission was sharply split on this issue only serves to further emphasize the need for a public vote," he says.

**Cycle On**  
 Wheels move Michigan—two wheels at a time on brand-new bike paths.

Nearly \$600,000 in contracts to build bicycle paths along state highways were let during the past year, reports Gov. William Milliken. And another \$750,000 is expected to be spent on similar projects this coming year.

The paths, Milliken says, "will make travel safer and more pleasant for many of Michigan's more than three million bicycle owners."

Why should bike paths cost so much?

Most of the projects involve work on road shoulders; addition of lanes and other features to make biking easier alongside the highway traffic.

The paths are built on both sides of the highway so cyclists can travel with auto traffic as the law requires, rather than in the opposite direction.

Completed bike path projects are to be found in Berrien, Hillsdale, Iosco, Kalamazoo, Livingston and Ottawa counties.

Still under construction are others in Hillsdale; Calhoun and Kalamazoo; Wayne, Oakland and Macomb; Washtenaw; Grand Traverse; Benzie; Ionia; and Kent counties.

In the planning stages are projects in Delta; Ingham; Kalamazoo and Van Buren; Kent; Marquette; Menominee; Mecosta; Muskegon; Oakland; Ottawa; and Roscommon counties.

**Little Pieces**  
 Helping the little guy get a share in the huge business of the state is the aim of a new task force, recently appointed by Gov. William Milliken.

The Task Force on Small Business Participation in State Purchasing will review state law and existing rules and regulations to see what changes need to be made to open up the system to smaller entrepreneurs.

"Although the state has in the past attempted to provide Michigan businesses with the opportunity to sell their commodities and services to state departments, small businesses have had difficulty in obtaining much state business," Milliken says.

Minority businesses historically have had even greater difficulty getting into the mainstream of our American business enterprise system, Milliken reports.

"In view of this fact," he says, "and the fact that most minority businesses are small, special attention and assistance must be given to them. We can and must improve the opportunity of all small businesses to obtain a greater share of the state's business."

**34 Years Ago...**  
 Thursday, Sept. 4, 1941—

The Knitting group of the American Red Cross, Chelsea Chapter, will meet at the home of Mrs. J. E. McKune on Friday, Sept. 5 at 3 p.m. The new quota, to be completed by Nov. 15 has just arrived, consisting of children's sweaters, women's cardigans, and men's sweaters. Yarn will be given out at this meeting.

Chelsea public schools opened Tuesday, Sept. 2 at 1 p.m. with a total enrollment of 490. Enrollment was taken in all of the grades and explanations were given as to the work to be completed during the year.

The following 4-H club members in this vicinity were awarded prizes at the Michigan State Fair:

In the Grand Champion club, Julia Beal received 4th prize for her Jersey cow; Dean Schweinhuth, 8th grade prize for a senior yearling heifer, and Henry Notten, 3rd prize for senior heifer calf.

Chelsea East Siders will oppose the West Siders in a game of donkey softball at the local athletic field next Monday evening at 8 p.m. Net proceeds will go to the injured players fund of the Twilight Softball League, sponsors of the event.

Telephone Your Club News To 475-1371.

**CHIROPRACTIC FOR LIFE**  
 CHIROPRACTIC CENTER  
 PHONE (313) 475-7633  
 7970 Clark Lake Rd. Chelsea, Mich.



DR. RAY ELWART

The Spine is the Human Switchboard controlling Health and Vigor

We specialize in helping people who want to reduce taxes and increase income. Our offerings include:

- I.R.A.
- Keogh
- Mini-Keogh (for moonlighters)
- Tax Deferred Annuities
- Real Estate Partnerships

Would you like to find out if we can help you?

Start by sending for a complimentary copy of our new booklet on tax saving ideas entitled Take A Financial Planning Break.

Robert R. Kley Associates, Inc.  
 3420 Vintage Valley  
 Ann Arbor, Mich. 48105  
 (313) 761-9655



## Social Security, SSI Checks May Now Be Sent Directly for Deposit

People who live in Michigan and 11 other states in the South and Middle West are getting a special opportunity to have their monthly social security and supplemental security income checks deposited directly in their checking or savings accounts, according to Robert A. Kehoe, social security district manager in Ann Arbor.

"The direct deposit program is entirely voluntary," Kehoe said. "People who want their social security and supplemental security income checks to continue coming to their homes shouldn't do anything. Their checks will keep on coming as in the past."

"But people who want their checks mailed to a bank, savings bank, savings and loan association or similar institution (or a Federal deposit authorization form)," he said.

Direct deposit information is being mailed with checks that will be delivered in September to people who get monthly social security or Supplemental security income payments. The direct deposit authorization form SF-1199 is available at savings and loan associations, banks, credit unions, and similar organizations.

"Completion of the form does not permit withdrawals from your account by anyone other than people you authorize," Kehoe said.

People whose checks are already being mailed to a financial institution should also make direct deposit arrangements with the SF-1199 form. The direct deposit program will help prevent loss and

theft of social security and supplemental security income checks and will eliminate standing in line to cash or deposit them, according to Kehoe.

The direct deposit option is also being offered to people getting social security and supplemental security income checks in Alabama, Illinois, Indiana, Kentucky, Minnesota, Mississippi, North Carolina, Ohio, South Carolina, Tennessee, and Wisconsin.

The option has already been offered in Georgia, Florida, and 23 states west of the Mississippi River. "This program will be extended to the other states later this year," Kehoe said.

Color Movie on Child Poison Prevention

A new, full-color, 14 1/2-minute motion picture which helps teach young children how to avoid being accidentally poisoned has been produced for Parke, Davis & Co., a subsidiary of Warner-Lambert Co.

Entitled "Teaching Children Poison Prevention," the film was made in co-operation with the American Academy of Pediatrics, according to Gordon Goyette, Parke-Davis director of Public Affairs.

The movie opens and closes with a group of children aged 2 through 7, discussing medicines with Dr. Frederick Margolis, and with a teacher.

"The middle segment of the movie is an animated cartoon, with two heroes: Sniffy the dog, and his redheaded master."

"Teaching Children Poison Prevention," available Sept. 3, on a free-lan basis from Modern Talking Pictures, was written by Dr. Margolis and directed by Gordon Weisenborn Productions, Inc., Chicago.

**Dial-A-Garden Topics Listed**

Dial-A-Garden, with pre-recorded dail gardening tips, is in operation 24 hours per day, 7 days per week. The Dial-A-Garden phone number is 994-1122.

Friday, Sept. 5 and week-end Fall Planting of Trees and Shrubs. Monday, Sept. 8—Canning or Freezing Applesauce or Apples for Pie.

Tuesday, Sept. 9—Control Houseflies Now. Wednesday, Sept. 10—Time To Bring House Plants Inside. Thursday, Sept. 11—Harvesting Pumpkins and Winter Squash.

**EVERGREENS at a BARGAIN!**

We almost give our trees away! Compare elsewhere then you know!

READY-DUG BLUE SPRUCE, NORWAY SPRUCE PINES, DOUGLAS FIR & SPREADING JUNIPER Up to 2 ft. tall

\$4.50 ea., 4 of one variety \$16, or 10 for \$35.

Also: BLUE SPRUCES up to 4 ft. tall Only \$6.00, 2 for \$10.00, 10 for \$45.00 But you must dig those yourself.

Less than 5 minutes will dig a tree now that soil is soaked. Excellent digging and planting time. Bring shovels and burlap or plastics if you dig them. Dealers and landscapers welcome.

**HEISE'S TREE FARM**

North side of I-94, exit 162, Fletcher Rd., then turn right on Seitz Service Drive along I-94 Expressway. OPEN ONLY ON WEDNESDAYS, SAT. & SUNDAYS - 9 to 3. P.S.—We have grown trees in Washtenaw County since 1942.

**HOUSEHOLD AUCTION**

Having decided to sell my home, a public auction will be held, located in the village of Unadilla or 3 miles south-east of Gregory on D-32 to Unadilla Rd., south 1 mile to Kaiser Rd., east on Kaiser Rd., or 9 miles north of Chelsea, corner Kaiser and Hadley Rds.

**SATURDAY, SEPT. 6**

Commencing at 12:30 p.m.

PHONE STOCKBRIDGE 517-851-8042 PRICE BROTHERS AUCTIONEERS PHONE STOCKBRIDGE 517-851-8042

**FURNITURE - HOUSEHOLD - ANTIQUES**

- |  |   |
|--|---|
| Beige 2-piece living room suite, nearly new.   | Quantity wall pictures.                         |
| Gold love seat, new.   | Table lamps.                                    |
| Magnavox stereo-AM radio.  | Floor fan.                                      |
| Rattan couch with 2 matching chairs and table.   | Odd chairs.                                     |
| Round formal top dinette table and 4 chairs.   | Pole lamp.                                      |
| 2 gold occasional rockers.   | Wall clock.                                     |
| Living room couch.   | Ping pong table.                                |
| 4-piece Mediterranean bedroom suite with queen size bed, triple dresser, good condition. | Old fruit safe.                                 |
| 84-in. green couch.  | 1-room air conditioner.                         |
| Oak buffet.  | Antique tables.                                 |
| 2 Lane table lamps.  | Old typewriter.                                 |
| Lane coffee table.   | 1890 postcard album.                            |
| 4-piece bedroom suite.   | Armstrong flute.                                |
| 2 portable sewing machines.  | Quantity records.                               |
| Chest of drawers.  | Antique dishes.                                 |
| 21-in. TV.   | Old silverware.                                 |
| Oak table, 4 oak chairs.   | Set of dishes, service for 8.                   |
| Cane bottom chairs.  | 8-mm movie camera and screen.                   |
| Antique parlor organ, good.  | 2 wall base heaters.                            |
| Electrolux sweeper.  | 2 boomie bikes.                                 |
| Roll-away bed.   | Quantity 12x12 ceiling tile.                    |
| Record cabinet.  | 4 mobile home heavy duty tires and wheels, new. |
| 2 antique lamps.   | Power lawn mower.                               |
|  | 2 milk cans.                                    |
|  | Hand and lawn tools.                            |
|  | Large amount of small items.                    |

TERMS: CASH. Not responsible for accidents or items after sold.

**ALICE DREYER**  
 OWNER



## Packard Fire Truck Joins in MD Telethon

Mac Packard and his 1979 Dodge fire engine participated in the Jerry Lewis Telethon for Muscular Dystrophy over the Labor Day week-end in Lansing.

Packard was contacted by the React Mobil Patrol Search and Rescue, Inc., of Lansing, to use his truck to collect donations for the Muscular Dystrophy Campaign.

As guests of the React group Mrs. Packard and her granddaughter, Colleen Collins, accompanied Mac.

For this event, the group was escorted through Lansing by a mobile unit to the VFW Post 6132. There donations were accepted for rides and turned into the fund.

Mrs. Packard reported that those who were watching the telethon Monday, on Channel 6, may have tuned in on the truck and heard Mac's voice.

During the 24 hours, music and entertainment was donated by various groups. Aside from the collection of checks, plants and puppies were auctioned off and a man shaved his beard for \$31.

The Telethon ended with \$13.8 million in pledges, the largest sum ever for such an event. A total of \$16.1 million was pledged in 1974, of which 99.6 percent was actually received. This was Lewis' 10th annual Labor Day telethon. He has been chairman of the Muscular Dystrophy Association for the past 25 years.

Mrs. Packard remarked, "all proved to be a most exciting 24 hours and many people never went to sleep."

Mac and Pa Kettle, like many other float makers were determined to make it to the grounds in spite of cloudy skies and a drenching rain. The float took third place in the Adult division.



RON HODGE

## Evangelist Coming to Sharon Church

Ron Hodge, nationally known Evangelist, will be speaking Sept. 8-13, 7 p.m. nightly at North Sharon Bible Church, 17999 Washburne Rd.

Evangelist Ron Hodge is involved in many activities such as radio ministry "Heart Cry for Revival," also a ministry to the prisons of America, and is the staff evangelist with the Rochester Hills Baptist church.

All services will be interpreted for the deaf. Nursery will be provided, there will be special music and every one is welcome. For more information, call 428-7222.

## Fire Truck Runs Shuttle to Fair

Mac Packard's "Red Wagon" express in the form of his 1939 Dodge fire truck was termed a "success" by its owner Saturday, following five days of shuttling children and adults to and from the 1975 Chelsea Community Fair.

According to Packard, about 500 persons used his service daily between the hours of 12 noon and 5 p.m.

The driving was left in the able hands of Vern Welch, Bob Smith, Jim Centelli, Winston Boyer, Vern Hafner and Jack Collins. The men made a total of 42 trips from Chelsea Drug to the fair and back. Driver Hafner made a sign board for the top of the truck to advertise the shuttle.

Contributing further to the success of the community fair project were Glen's Mobil, the Chelsea Fire Department, Cal Clark and Don Baldwin. The Chelsea police department reserved two parking spaces for the vehicle.

As for Packard, he was often seen enjoying the ride along with the kids . . . on the rear step of his truck.



GOING TO THE FAIR: Mac and Pa Kettle, alias members of the Duane Bollinger and Paul Koch families, rode in the Chelsea fair parade Saturday morning all the way to the fairgrounds. It appears the float took third place in the Adult division.



CHS FRESHMAN CLASS members chose to ride in the Chelsea Fair parade Saturday without McDonald's jingle "We Are the Ones," took fourth place in the Youth Division. The float, based on the benefit of protection. Their float, based on the

## Abbreviated Fair Parade Held Saturday Despite Downpour

(Continued from page one)

In the Fire Hall Saturday afternoon, in the Youth Division, the seniors, whose theme, "Bicentennial Stars and Stripes Forever," took first place. The float, a waving bicentennial flag, was decked with female members of the senior class in complementary gowns of red, white and blue with white shawls draping over their shoulders. They carried small groups of flowers entwined with red, white and blue ribbons effectively carrying out their theme. Members of the class screamed with delight upon learning of the first-place award. The group plans to enter their float in the Saline Fair to be held this week.

In second place was the Junior class float. Their "You Can Bet on Us," featured a number of gambling themes . . . all winning ones. Even the dice were turned to win. "Into the Future Is the Class of '78" and "Follow the Yellow Brick Road" was the couplet them given to the sophomore class float. Done in a rainbow of paper napkins, pastel flowers, the float featured a "Dorothy" complete with shiny patent red shoes.

Members of the freshman class did a take-off on McDonald's restaurant. The theme, "We Are the Ones," and "McFreshman" won them the fourth place award in the youth division.

Two other floats, a bicentennial tractor and cake built by 13-year-old Mark Lesser and the Earn,

Learn and Play entry "We Had a Whale of a Time in Earn, Learn, and Play" were entered in the Youth Division. ELP staffer Holly Porter remarked that her kids were so disappointed when their float designed and built during the program was destroyed earlier in the summer by vandals that they wanted to build it again. "We did it in a matter of days," she said.

In the adult division, a float consisting of a beat-up pick-up with numerous coats of paint, and a trailer pulling a small wooden house, constructed by a group that call themselves "Lima Center Group" took first place. The group Ralph Trinkle, Don Laler, and Ethel Irwin Haist completed their float with two calves, some chickens, small pigs and a goat atop the hood of the pick-up.

In second place was the Methodist Home entry, "Memory Lane." The verse, "I am Not Afraid of Tomorrow, for I Have Seen Yesterday and I Love Today," was represented by two home residents, four children and a baby-doll. This is the first year in four that the Home has not taken first place for its efforts.

Third-place award went to the Duane Bollinger and Gary Koch family for their entry, "Ma and Pa Kettle Got to the Chelsea Fair." One of the family members said it was the first time they entered the parade. "We had a lot more we wanted to do, but we couldn't

get it here with the rain."

In fourth place was the Chelsea Kiwanis Club entry, "Touch A Life." The float constructed entirely of paper flowers and chicken wire featured a well-sculptured hand; sitting in the palm was Chelsea Fair Queen and Kiwanis Club candidate, Brenda Shadoun.

Following the judging, crews worked quickly to cover their floats. Groups concurred and those with the floats decided they wanted to march despite the torrents of rain falling outside.

Floors covered, the 1975 Chelsea Fair Parade stepped off at 1:45 p.m. accompanied by whomever dared brave the weather.

Among the marchers was Mac Packard and his red fire engine full of family and friends decked out as clowns. The group handed out candy and gum to wet children along the route to the Fairgrounds. Others marching were members of the fire department, the 5th Michigan Regimental Band and the Dexter-Vintage Vehicle Club.

One of the pleasures of life for many folks is a huge bowl of white, buttery popcorn, still warm from its session on the stove, nicely salted and crisp. Michigan grows popcorn all over the state with an average yield of 2,100 pounds to the acre. We produced 7,980,000 pounds in 1974 from 3,800 acres. In cash terms, the popcorn crop was valued at \$567,000 and we ranked ninth among the 50 states.

**Rings Silver Clocks**

**Lladro Figurines Authentic Hummel Dealer Dresdin China Figurines Expert Watch Repair Expert Jewelry Repair**

**LEWIS JEWELERS**

**Hallmark CARDS**

**20% OFF On All Jewelry**

**Watches Diamonds Fine Gifts**

Phone 994-5111

**255 N. Maple**

(Across from Fox Village Theatre)

**MAPLE VILLAGE SHOPPING CENTER ANN ARBOR**

## LATE-BUT NOT TOO LATE To Register for the FALL SEMESTER At Washtenaw Community College

Late Registration from Wednesday, September 3 - Tuesday, September 9

DAILY HOURS: 8:30-11:30 a.m.; 1:00-4:00 p.m.

EVENING HOURS: 6:30-8:30 p.m. on Wednesday and Thursday, September 3 and 4 only

LATE FEE: \$5.00

Don't Delay - REGISTER TODAY!

For further information, call 971-6300, Ext. 402.

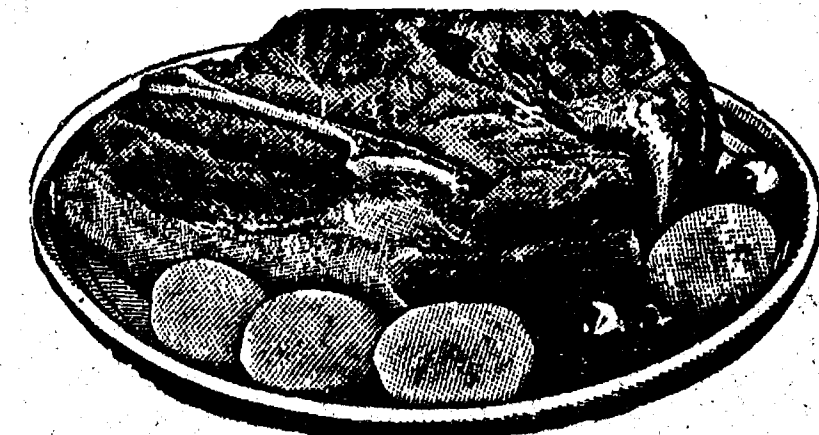
# Jiffy market

Big Enough To Serve You . . . Small Enough To Know You!

TOP VALUE FOODS - GUARANTEED SATISFACTION - COURTEOUS SERVICE

COMPLETE FRESH MEAT DEPT. - USDA CHOICE BEEF - THE FINEST OF FRESH PORK

## MAHOGANY FARMS U.S.D.A. CHOICE BEEF



Tender Beef with Flavor! U.S.D.A. Choice

- Blade Cut Chuck Roast . . . lb. **79¢**
- Center Cut Chuck Roasts . . . lb. **89¢**
- Arm Chuck Roast . . . lb. **\$1.19**
- English Roast . . . lb. **\$1.19**
- Rib Steaks . . . lb. **\$1.69**
- Beef Stew . . . lb. **\$1.19**
- Ground Chuck . . . lb. **\$1.19**
- Short Ribs . . . lb. **49¢**

## SPECIAL SALE ON U.S.D.A. CHOICE FRONT QUARTERS



HANGING WEIGHT Approximately 140 to 160 lbs. **72¢ lb.** Plus 12¢ lb. for processing.

Processing includes cutting, grinding and wrapping to your specifications, and sharp freezing.

## U.S.D.A. CHOICE BEEF

EXTRA SPECIAL YOUNG - TENDER

## BEEF LIVER 49¢ lb.

NOTE!! This is GRAIN FED BEEF with full flavor and tenderness that you are paying for.

STAMPED AND GRADED U.S.D.A. CHOICE

SIDES - FRONTS - HINDS WHOLE RIBS - WHOLE LOINS

CUSTOM CUTTING - WRAPPING - FREEZING QUICK SERVICE ON BUTCHERING YOUR BEEF OR OURS

CAMELOT <b>LIVERWURST</b> <b>69¢ lb.</b>	CAMELOT <b>Braunschweiger</b> <b>69¢ lb.</b>	ECKRICH <b>SMOKIES</b> 12-Oz. Pkg. <b>99¢</b>	<b>HAMBURGER</b> PACKAGED FRESH DAILY Lean <b>79¢ lb.</b> SATISFACTION GUARANTEED
--	--	---	--

## Supermarket Groceries-Fresh Produce-Large Assortment Frozen Foods

**FISHER'S**  
Salted In Shell  
**PEANUTS**  
**59¢ lb.**

**Bargain Prices**  
On Several Brands  
**BEER**

**7-UP**  
12-Oz. Cans **99¢**

FROSTIE 40 1/2-OZ. NO-RETURN BOTTLES

**ROOT BEER . . . . 8 pac \$1.49**

10-OZ. BOTTLES DELICIOUS

**ORANGE CRUSH.. 8 for \$1.49**

1 1/4-LB. LOAF KLEEN-MAID

**WHITE BREAD . . . . 35c**

6 1/2-OZ. CAN BREST O' CZHICKEN

**CHUNK TUNA . . . . 47c**

## JIFFY MARKET-YOUR MILK STOP - FARM MAID DAIRY -

<b>HOMOGENIZED MILK</b> . . . . gal. <b>\$1.19</b>	
<b>HALF &amp; HALF</b> . . . qt. <b>49c</b>	
1-LB. PKG. DAD'S <b>VANILLA WAFERS</b> . . . <b>49c</b>	1-LB. CRTN. FARM MAID <b>COTTAGE CHEESE</b> . . . . <b>49c</b>
2-LB., 6-OZ. CAN <b>SWIFTNING</b> . . . . <b>\$1.29</b>	16-OZ. JAR BORDEN'S, RICH FLAVOR <b>CREAMORA</b> . . . . <b>89c</b>
	1-LB., 2-OZ. JAR VELVET CREAMY <b>PEANUT BUTTER</b> . . . . <b>69c</b>

## COCA-COLA . 12-Oz. Cans 8 pac \$1.49

## JIFFY MARKET MARATHON GAS PUMPS

**REGULAR GAS** **58.9¢ gal.**  
Includes All Taxes

**PREMIUM** . . . . 59.9 gal.  
**LEAD-FREE** . . . . 59.9c gal.

**QUAKER MAID OUTBOARD OIL**  
2- & 4-Cycle Engines  
**89c qt.**  
Use in ratios up to 50 to 1

**Gas Pumps and Store OPEN 7 to 10 7 DAYS A WEEK**

**Open With Complete Service, 7 Days A Week**  
**TOP VALUE FOODS 7 a.m. MORNING to 10 p.m. NIGHTS**  
Sole Prices Sept. 4 - Sept. 7





**GRAND CHAMPION HOBBY:** Byron Smith's wood sculptured praying hands, a project he began while on vacation in Minneapolis, Minn., to learn the art of wood sculpturing, took the Grand Champion Award in the adult hobby division at the Chelsea Community Fair last week. Smith not only sculptured the hands, but carved the frame they are mounted on as well.



**HE WORKS WITH GLASS:** John Carpenter received two ribbons in the senior citizen hobby division at the Chelsea Community Fair. Pictured here, Carpenter displays some of his work. He creates lamps from bottles, vases and plant holders. The two ribbons were for first and second place.

### Commercial Mushroom Growing Is Big Business

Michigan has large commercial mushroom plants in both southern and southeastern regions of the state. These plants produce 15 million pounds of mushrooms annually to place Michigan second in the country among the 50 states growing this product. Production is a complicated, painstaking and difficult operation with the mushrooms grown in air conditioned rooms of high humidity, darkness and constant 55-degree temperature.



Are you gambling with your family's security?

Suppose you were sued for \$500,000... and lost! Would you be able to stay out of bankruptcy? And what would happen to your family security? Suits involving hundreds of thousands of dollars are all too frequently started against businessmen and professionals simply because they are well-known as affluent and successful people! Here's an economical way to avoid such a risk! Our Executive Liability Insurance provides up to \$5,000,000 of protection for you and your family. Call us now. We can probably put all your liability insurance together and even save you some money.

it's better  
**altogether**

**A. D. MAYER AGENCY, INC.**

BOB BARLOW, AGENT  
PHONE 475-2030  
115 PARK ST., CHELSEA

**Auto-Owners Insurance**  
LifeHomeCarBusiness



**AN OLD HAND:** Paula Beaudoin was a winner of three ribbons in the children's hobby division at the Chelsea Community Fair. Paula, a 4-H member, holds several awards attesting to her talents in ceramics and painting. Pictured here, the young lady displays her prize-winning works.



**A WINNING CHECKERBOARD:** 14-year-old Dan Blough was awarded a Grand Champion blue ribbon in the youth division for his finely finished wood checkerboard. Dan, a consistent winner in 4-H, took a blue ribbon at the Chelsea Fair last year for his model of a bull.

Michigan was the world's largest peppermint oil producer until 1940 when a fungus destroyed most of the crop. Today, little peppermint is grown but spearmint, which was grown on 3,600 acres, produced 101,000 pounds of oil in 1974. Value of the spearmint oil produced was \$1,111,000. Michigan ranked fifth in the country in spearmint oil production. Chief counties growing this crop are Clinton, Calhoun, Eaton, Ingham and Shiawassee.

Michigan housewives are famous for their luscious peach pies and cobbler, and well they might be with supplies of this fruit so handy. In 1974 our industrious Michigan farmers sold 70 million pounds of peaches valued at \$8,190,000. This placed us fifth among peach producing states. Major counties for this fruit lie in the orchard areas along the Lake Michigan side of the state—Berrien, Van Buren, Oceana, Allegan and Kent.



**POSTCARDS, POSTCARDS AND MORE POSTCARDS:** A postcard collection begun in grade school won Pastor John Morris one ribbon in the adult hobby division at the Chelsea Community Fair last week. The collection, numbering some 6,000, includes postcards from all over the United States and several from foreign countries.

## Hobbies Section Special Winners

The Chelsea Methodist Home again captured the Grand Champion ribbon at the 1975 Chelsea Community Fair in the senior citizen division with their fine collection display.

Going to school has paid off for talented Byron Smith, senior vice-commander of VFW Post 4076, who received the coveted adult Grand Champion ribbon for his sensitive hand carving. Readers may recall the article in last week's Standard concerning Smith's wood-carving course in Minneapolis.

Tim Whitesall, Jr.'s painting of Abraham Lincoln won the Grand Champion ribbon in the children's division. Tim is particularly proud because the picture will be a birthday present for his grandfather.

The Rev. John R. Morris' impressive postcard display features

cards from every city and state in the U.S., plus those from several foreign countries. Pastor Morris began his hobby in grade school and, although Morris did not volunteer his age, the collection is awesome.

John Carpenter, senior winner of both a first and second place, does fantastic things with a glass cutter. Some of his items displayed included lamps made from bottles, cleverly fashioned vases and plant holders.

Paula Beaudoin, winner of three ribbons in the children's division is an old hand at winning. Paula, a 4-H member, has several 4-H awards to prove her talent in ceramics and painting.

Fourteen-year-old Dan Blough whose beautifully finished checkerboard, won him the Grand Cham-

pion ribbon in the youth division is also a consistent 4-H winner which includes two purple ribbons and several honor-group awards which are special ribbons given to those whom the judges feel merit an extra award. Last year at the Chelsea Fair, Dan took a blue ribbon for a fine bull model.

Kenneth Bucholz, blue ribbon winner in the adult model section, displayed his special talent and technique in the beautiful model plane which received much attention from fair visitors.

Beverly Yelsik and Virginia Albrecht, superintendents of the hobbies section, remarked that the exhibitors should be particularly proud of their entries because competition was very close in some divisions. The judges, all professionals, had some difficult decisions to make.



**PRIZE-WINNING PRESENT:** Tim Whitesall, Jr.'s Grand Champion portrait of Abraham Lincoln is one he is particularly proud of, for the portrait is to be a birthday gift for his grandfather. The award was given to Tim for his entry in the Children's Hobby Division at the fair.

### EXPORT MARKET INCREASING FOR MICHIGAN FOOD CROPS

Export of Michigan farm crops is increasing every year, as both European and Far Eastern markets are opening up to Michigan's fine foods.

### LOSE UGLY FAT

Start losing weight today or money back. MONADEX is a tiny tablet and easy to take. MONADEX will help curb your desire for excess food. Eat less—weigh less. Contains no dangerous drugs and will not make you nervous. No strenuous exercise. Change your life... start today. MONADEX cost \$3.00 for a 20 day supply. Large economy size is \$5.00. Also try AQUATABS: they work gently to help you lose water-bloat. AQUATABS—a "water pill" that works—\$3.00. Both guaranteed and end buy! CHELSEA DRUG STORE 101 N. Main St. • Mail Orders Filled



**HEIFERS REPLY HANDSOMELY—Grow 'Em Right!**

At Wayne Research Farm twin 3-day-old heifers went on test.

One was fed Wayne Calnip medicated non-cereal milk replacer followed by Wayne Calf Krunch. The other: whole milk, hay, grain, soybean meal.

Wayne-fed heifer was ready for breeding earlier, calved earlier, produced milk 3 months earlier. And 2½ years later, showed a profit difference over twin sister of \$164.26!

Better stop is.

**MCGALLA FEED SERVICE**

Phone 475-8153  
12875 Old US-12, Chelsea

**WAYNE CALFNIIP & CALF KRUNCH**

From Allied Mills: The Innovators

## Be Equipped for Fall Grass Cutting and Leaf Collecting

- ★ LAWN TRACTORS
- ★ POWER MOWERS
- ★ LAWN SWEEPERS
- ★ VACUUM COLLECTOR ATTACHMENTS
- ★ SELF-PROPELLED LAWN VACUUMS
- ★ CHAIN SAWS and PORTABLE GENERATORS
- ★ USED RIDING MOWERS and LAWN TRACTORS

**CHELSEA HARDWARE**

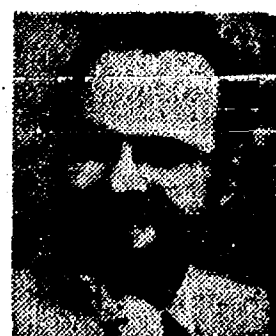
GARD-N-SAW ANNEX

### PLEASE GIVE 'EM BACK

El Paso, Tex.—As a Continental Airlines flight was about to leave El Paso, the captain's voice came over the public address system asking a certain woman to "pass her husband's car keys up to the cockpit and we'll throw them out the window so her husband can go home."

**You and Yours**

... the reason we're in business ... your family, your home, your car, boat, recreational vehicles, your business, your financial security. We understand how important all these things are to you. After all, we have or want the same things. For the facts and a fair price.



**DAVE ROWE**

107½ S. Main  
Chelsea, Mich.  
Ph. 475-8065

**FARM BUREAU INSURANCE GROUP**

Insurance, Farm, Marine, Life, Fire, Auto, Life, Health, Accident, Sickness, Disability, Death, etc.

CALL OR STOP IN

## CHELSEA GLASS WORKS

WORKMANSHIP AND MATERIALS FULLY GUARANTEED.

Open Daily 8 a.m. to 5 p.m.; Sat. 8 a.m. to 1 p.m.

140 W. Middle, Chelsea Phone (313) 475-8667

### WE REPAIR AND REPLACE:

- ★ STORE FRONTS
- ★ FURNITURE TOPS
- ★ SHOWER DOORS
- ★ THERMOPANES
- ★ AUTO GLASS - Including Windshields
- ★ MIRRORS
- ★ PATIO DOORS
- ★ TUB ENCLOSURES

Free Pick-up and delivery on auto work.

**Storm Door & Window Reglazing & Screens**

COMMERCIAL BUILDINGS OR RESIDENTIAL

**PROMPT SERVICE REASONABLE PRICES**

## Public Announcement

Superintendent Charles S. Cameron today announced a free and reduced price meal policy for Chelsea School District school children unable to pay the full price. Local school officials have adopted the following family size and income scale to assist them in determining eligibility.

### FAMILY INCOME ELIGIBILITY SCALE

Total Family Size	A Scale for Free Meals	B Scale for Reduced Price Meals
1	\$ 3,230	\$ 3,231-\$ 4,520
2	4,240	4,241- 5,930
3	5,250	5,251- 7,350
4	6,260	6,261- 8,770
5	7,190	7,191- 10,060
6	8,110	8,111- 11,360
7	8,950	8,951- 12,530
8	9,790	9,791- 13,700
9	10,550	10,551- 14,770
10	11,310	11,311- 15,840
11	12,060	12,061- 16,890
12	12,810	12,811- 17,940

Each Additional Family Member 750 1,050

Children from families whose income is at or below those shown are eligible for meals free or at reduced prices. In addition, families not meeting this criteria but with other unusual expenses due to unusually high medical bills, shelter costs in excess of 80 percent of income, special education expenses due to the mental or physical condition of a child, and disaster or casualty losses are urged to apply.

They may do so by filling in the application forms sent home with a letter to parents. Additional copies are available at the principal's office in each school. The information provided on the application will be confidential and will be used only for the purpose of determining eligibility. Applications may be submitted any time during the school year.

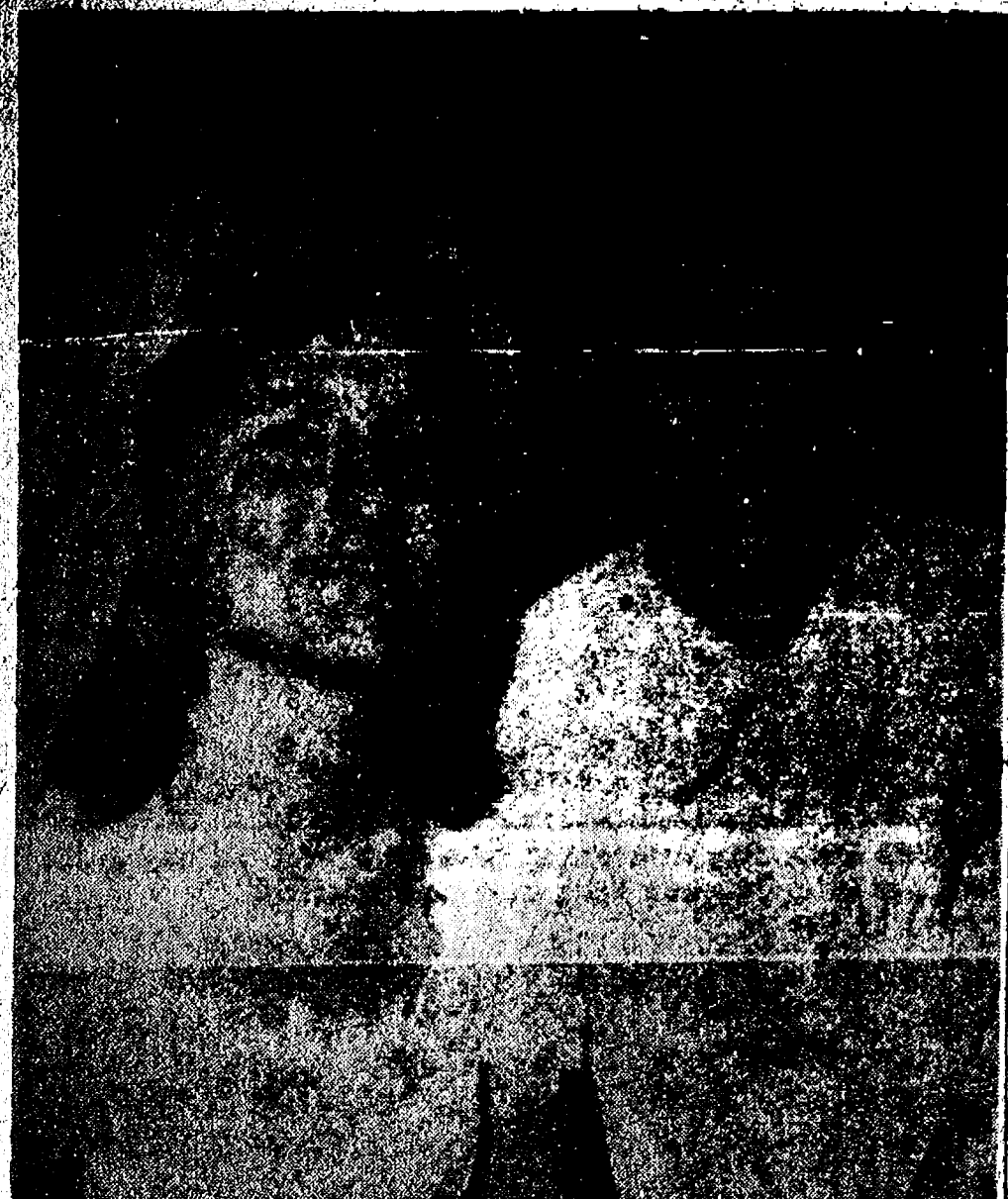
In certain cases foster children are also eligible for these benefits. If a family has such children living with them and wishes to apply for such meals for them, they should contact the school. In the operation of child feeding programs, no child will be discriminated against because of his race, sex, color or national origin.

Under the provisions of the policy, the school principal will review applications and determine eligibility.

If a parent is dissatisfied with the ruling of the official he may make a request either orally or in writing to Fred A. Mills, Business Manager, whose address is High School Administration Building, for a hearing to appeal the decision. Hearing procedures are outlined in the policy. A complete copy of the policy is on file in each school and in the office of the Superintendent where it may be reviewed by any interested party.

**Chelsea School District**





Mr. and Mrs. Roy Kemppainen

## Ann M. Banres, Roy Kemppainen Speak Vows at Methodist Church

A reception for 200 guests at the Inverness Country Club followed the wedding of Ann Marie Banres to Roy W. Kemppainen. The former Miss Banres is the daughter of Mr. and Mrs. Jack E. Banres of 9 Maple Ct., Grand Rapids. Mr. Kemppainen is the son of Mr. and Mrs. William Kemppainen of Grand Rapids.

The Aug. 30 evening wedding was held in the Chelsea Methodist church with the Rev. Clive Dickens officiating at the 6:30 p.m. ceremony. Miss Jeanne Haselschwardt provided the music.

For her marriage to Mr. Kemppainen, the bride chose a short sleeve gown of sheer white organza with a Venice lace edged chapel-length train. Appliques of Venice lace fashioned the scalloped neck. Babies breath and pink roses held her finger tip veil in place. She carried a small bouquet of roses, babies breath and iris.

Serving her sister as maid of honor was Julie Barnes. She was dressed in a pink polyester gown with cap sleeves edged in lace and with a complementary lace inset at the neck. She wore a pink hat trimmed with pink daisies and carried a colonial bouquet of pink daisies and tulips. Other bridesmaids were Jane Barnes, sister of the bride, and Miss Nance Norton of Kalamazoo, sorority sister of the bride. They were dressed



**RIBBON WINNERS** Amy Eisenbeiser (left) and Diane Barels (right) display their ribbon-winning garments entered in the Chelsea Community Fair last week. Amy received a blue first premium ribbon for her long skirt in the junior division and a yellow ribbon for a tiny floral print dress. Diane's shirt jacket took a third-place yellow ribbon and her gingham type check apron took a blue ribbon. Both girls entered their garments in the junior homemaking division.

## Hutar-Blanchard Marriage Vows Spoken in Ohio

Following a wedding trip to Montreal and Quebec cities in Canada, newlyweds Mr. and Mrs. Mark Edward Blanchard will make their home in Willoughby, O. The bride is the former Mary Hutar, daughter of Mr. and Mrs. Matthew Hutar of Euclid, O. The bridegroom is the son of Dr. and Mrs. Gerald Edward Blanchard, M.D., of 755 S. Freer Rd.

The couple were married June 21 in St. Vitus church, Cleveland, O. by the Rev. Edward Bevec.

Matron of honor was Mrs. Cyril Kribal of Berea, O. Serving as best man was Daniel K. O'Donnell of Euclid.

Bridesmaids included Miss Margaret Mang of Euclid, Miss Pamela Taylor of Lakewood, O., Miss Michelle Blanchard and Miss Mary Beth Blanchard, sisters of the bridegroom.

Ushers were Lt. William Wolf of Coperas Cove, Tex., Robert Pawlowski of Chelsea, Roland Janulis of South Bend, Ind., and John Hutar, brother of the bride.

A dinner reception for 450 guests was held at Reher Hall in Euclid. The bridegroom's parents held the rehearsal dinner at Stouffer's Top of the Town in Cleveland.

The bride is a 1974 graduate of John Carroll University in Cleveland. She will teach fifth grade in Willoughby. Her husband is a 1972 graduate of John Carroll University and is employed at Bailey Meter Co., of Cleveland, while attending the business school at John Carroll for graduate studies.

## Denise Robbins Nabs Top Sewing Awards

A brown wool two-piece walking suit (hooded coat and lined wool pants) made by 14-year-old Denise Robbins took the Grand Champion Award in the Home Economics Division this year at the Fair. Miss Robbins has been a member of 4-H for five years and has received the majority of her training under the direction of Gloria Greenleaf. She also won the Grand Champion in the Junior Clothing division for construction of her tailored garment.

According to her mother, Mrs. Robert (Marie) Robbins the entire family sews; her older daughter, Darlene Robbins Straub took a double Grand Champion in the Home Ec division two years ago for her expertise in sewing. While Mrs. Robbins admits to being an accomplished seamstress herself,

## Wilbur Hinderers Are Honored on 50th Anniversary

Mr. and Mrs. Wilbur Hinderers were entertained by their children and grandchildren over the Labor Day week-end at Webers Inn in celebration of 50 years of marriage. The Hinderers were married Sept. 1, 1925.

Hosting the occasion for their parents were Mr. and Mrs. Fred (Marcelline) Benson and family of Medina, N.Y., and Mr. and Mrs. James (Donna) Linderman and family of Westland.

The Hinderers were honored Aug. 24 by Mrs. Hinderers' sisters and brothers at the home of Mrs. Whitney Riedel in Manchester.

## Beta Sigma Phi

Xi Gamma Mu chapter of Beta Sigma Phi held their beginning day meeting Aug. 26 to plan the oncoming year's activities. The meeting was held at the home of Loree Stafford.

A Heritage pot-luck, consisting of ethnic dishes was served to carry out the Bicentennial year theme. Complementing the dishes, was a beautiful table setting.

The meeting included the discussion of programs for the year, service projects and ways and means projects. Many of the forthcoming programs will revolve around the Bicentennial; the heritage of women.

The next meeting will be held Sept. 9 at the home of Judy Barkley.

## Walker-Hubert Vows Spoken in Texas

Debbie Walker and Tom Hubert were married Aug. 15 in Corsicana, Tex. The Rev. Don Johnson performed the double-ring ceremony. Attendants for the couple were Deann Walker and John Ron Johnson.

The couple plan to make their home in Corsicana following a brief wedding trip.

The bridegroom is the grand son of Mr. and Mrs. V. O. Johnson. Johnson was the administrator of the Chelsea Methodist Home from 1969 to 1973.

Nutritionists recommend you form good breakfast habits, for lasting energy and excellent health. If irregular schedules prevent everyone from sitting down to the table together, build breakfast around serve-yourself-anytime convenience foods.

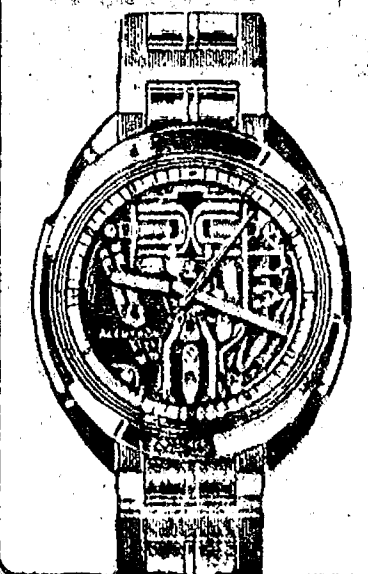
## DOSO Carpet Cleaning

September - and the children are back in school. It's time to pay some attention to your carpeting. We recommend Host, the new method of cleaning carpets without water. The carpet is dry and ready to walk on immediately. Use our Host Electric Up-Brush. It's easy. Clean 40 sq. yds. only \$9.95. Phone for information.

**MERKEL BROTHERS**

**PIERSON & SONS**  
LICENSED GENERAL CONTRACTORS  
475-8750  
New Construction, Remodeling, Siding.

This is a Bulova Accutron watch.

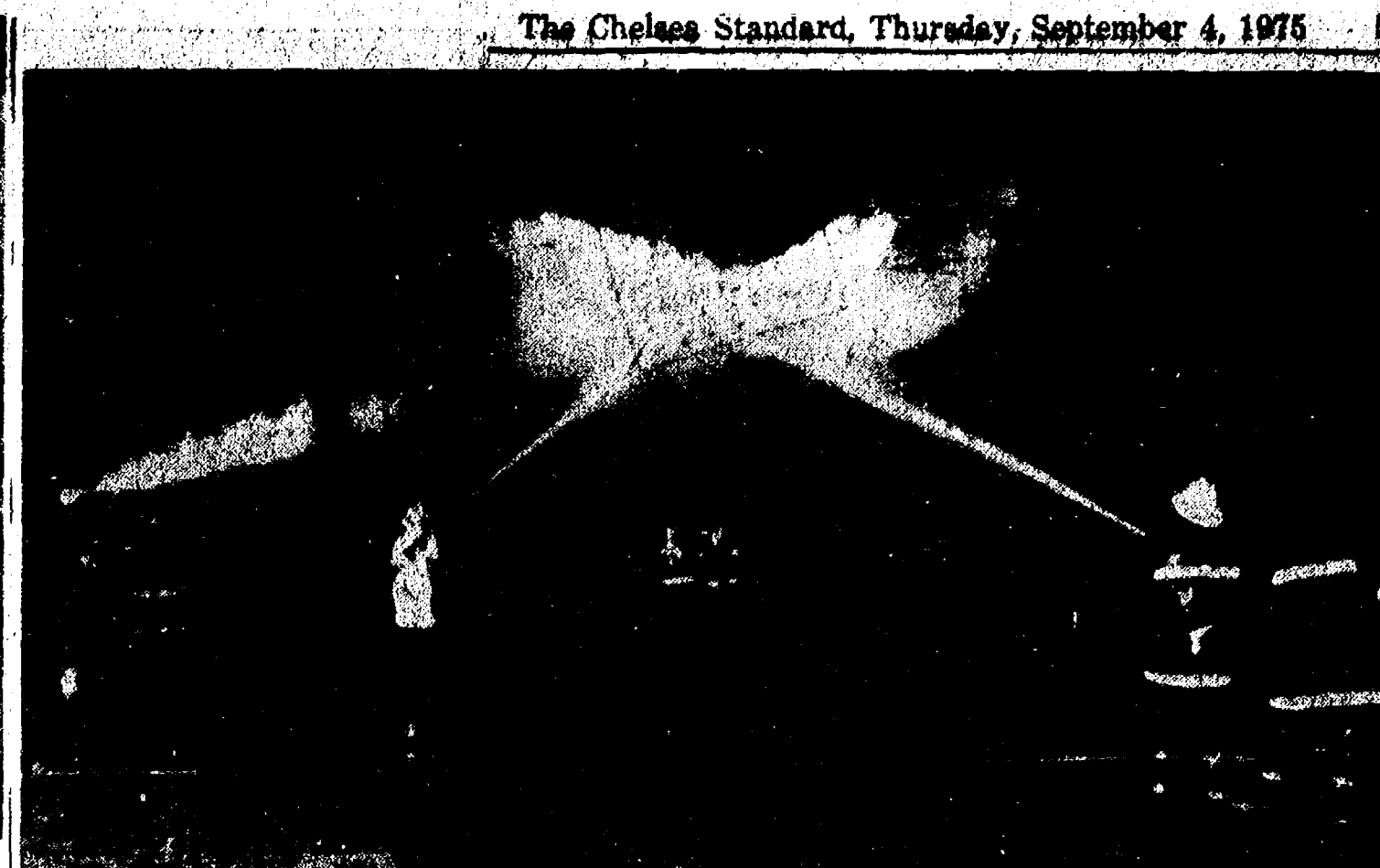


We have lots more.

See our complete selection of styles for men and women. All with the Accutron tuning fork movement that guarantees accuracy to within a minute a month. From \$95 to \$1800.

**WINANS JEWELRY**

\*We will adjust to this tolerance, if necessary. Guarantee is for one year.



**CHELSEA AND DEXTER** firemen battled it out last Tuesday evening at the Fire Department's annual waterball contest. The fire fighters also gave a demonstration on putting out small home fires.

## What's Cooking in Michigan

By Larriestine Trimm  
Michigan Dept. of Agriculture  
Marketing Information Specialist

Join in the celebration of National Better-Breakfast month and get your family off to a smacking good start every day. Serve nourishing, enjoyable foods; taking advantage of those that are seasonably plentiful and economical.

Marketing officials of the Michigan Department of Agriculture say plentiful foods include tasty fruits like juicy sweet cantaloupe, apples, pears and prune-plums, wheat products, and milk and mild products. All provide the makings of a good breakfast.

Fruits are important sources of minerals, vitamins and fiber. They're great eaten alone and they go well with most other foods. An easy-to-fix breakfast for those on-the-go could include a cottage cheese and fruit combination, toast and milk.

For superb nutrition serve fruits with hot cereals. Cooked rolled oats and wheat cereals are good sources of protein. They cost less per serving than most other

cheeses and sandwich spreads with a variety of enriched breads.

You may want to substitute a hard-boiled egg for the sandwich on occasion. Cook it the night before or, better yet, cook several and store them in the refrigerator to have on hand for snack foods. An egg is a complete protein food in itself and a real bargain cents-wise.

## CARPET REBIRTH

Give your carpet a new lease on life by cleaning it regularly.

## JET SPRAY CARPET CLEANING

Use Your Phone 761-3025 or 475-1509 BankAmericard. Ask for John Lixey.

We are proud to announce that Kathy McDaniels has joined our staff of creative hairdressers. Kathy is now taking appointments on Fridays and Saturdays.

## HOUSE OF ORIENT

OPEN MON.-SAT. EVENINGS BY APPT.  
107 W. MIDDLE PH. 475-8196

## Magic Mirror Beauty Salon

Open Tuesday thru Friday  
9 a.m. to 9 p.m.  
Saturday, 8 a.m. to 3 p.m.

PHONE 665-0816



## FRANKLIN FURNITURE SALE!

15% TO 20% OFF

Country, contemporary or classic, whichever style you adore famous Franklin Furniture makes it and makes it well: well styled, well tailored and well built. September is the month to buy from our featured upholstery line at substantial savings! You may choose from our stocked merchandise or special order.

**Merkel**  
FURNITURE and CARPET

MAIN STREET IN CHELSEA PHONE 475-8621 - CHICAGO BLVD. IN TECUMSEH PHONE (517) 423-2205  
OPEN MONDAY AND FRIDAY NIGHTS UNTIL 9:00 - PROFESSIONAL DESIGN CONSULTING

**THE Photo Depot**  
107 1/2 Main St. Chelsea, Mi. 48118  
Phone: 475-1687



## Senior Class of 1976

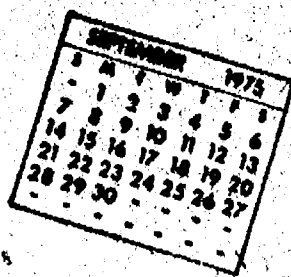
Please talk to Vern Otto about environmental portraits. Schedule an appointment for your sifting.

WEEK DAYS .....LATE AFTERNOON  
WEEK ENDS .....ANY TIME

Please Call Vern Otto



## Community Calendar



Lima Center Extension Study group Wednesday, Sept. 10 at Lima Center Hall. Meeting at 11 a.m.; pot-luck at noon; lesson, Women and the Law, at 1 p.m.

Modern Mothers Child Study Club, Tuesday, Sept. 9. A guided tour of the Waterloo Farm Museum starts at 6 p.m. sharp. Pot-luck supper following at the home of Pat Coelius.

Town and Country Child Study Club, at the home of Mrs. Larry Schultz, Tuesday, Sept. 9 at 6:30 p.m. Co-hostess, Sandy Thurkow.

Chelsea Community Farm Bureau, Thursday, Sept. 11, 8 p.m. at the home of Mr. and Mrs. Norman Hinderer, 4480 Chelsea-Manchester Rd. Assisting hosts, Mr. and Mrs. Everett Van Riper.

Business meeting of the Unadilla Base Line Cemetery Sept. 5, 7 p.m. at the cemetery.

Washtenaw County bookmobile sponsored by the Washtenaw County Library will be at the North Lake United Methodist church, 1411 North Territorial, every other Wednesday from 4:25 to 5:10 p.m., beginning April 9.

Pap tests are free for all area women, Tuesday mornings, at St. Joseph Mercy Hospital, Ann Arbor. Call American Cancer Society office, 668-8857 for appointment.

AA and Al-Anon meeting, Monday evenings at Chelsea Hospital, 8:30 p.m. Closed meetings.

Inquiries regarding the Chelsea blood bank may be directed to Harold Jones in the event that Mrs. Dudley Holmes is unavailable, or to Robert Moyer, American Red Cross in Ann Arbor, 971-5300.

Chelsea Area Historical Society is still taking 1975 annual memberships. Applications for membership may be picked up at McKune Memorial Library, or write Box 334, Chelsea 48118, or telephone 475-7290 for information.

Friends of McKune Memorial Library. Annual membership drive is in progress. Call 475-8326.

Humane Society of Huron Valley has dogs and cats for adoption. Owners may reclaim their lost pets. Phone 662-5585. Open from 9 a.m. to 5 p.m. daily; Sunday, 1 p.m. to 5 p.m. 100 Cherry Hill Rd., quarter-mile south of Plymouth Rd. at Dixboro.

Sylvan Township Board meeting the first Tuesday of the month, at 7 p.m., at Sylvan Township Hall.

Tours of Chelsea Community Hospital and surgical center are available for small groups. To arrange for tours, call: Neva Jordan, 426-8027, or Dorothy Miller, 475-8020.

Chelsea Co-op Nursery applications for 1975-76 classes are now being taken. For information, call Jearl Mull, 426-8822 or Leslie Bowers, 475-1401.

Chelsea Home Meal Service delivers one hot meal a day to elderly and disabled living in the Chelsea area. For information call 475-8014 or 475-2823.

Kinder Klub at the home of Mrs. Jean Hafner, Sept. 9, 7:30 p.m. A salad supper provided by the members will be served. Guests are welcome to this meeting and to any future meetings which will include discussions on education values, and interior decorating with a trip to Louis decorating store in Jackson. Women living in the Chelsea school District interested in being a guest or joining the club please contact Nadine Koch at 475-7319.

Chelsea Rebekah Lodge No. 130 Tuesday, Sept. 16 at 7:30 p.m. Meetings first and third Tuesday of every month.

Past Noble Grands pot-luck supper at home of Mrs. Luther Hale Tuesday, Sept. 9, 6:30 p.m. Bring table service and dish to pass.

Congressman Bob Carr's Mobile Office Van will be in Chelsea from 12 noon to 1:30 p.m. Monday, Sept. 15; Monday, Oct. 13; Friday, Nov. 7 and Monday, Dec. 22.

Regular meeting Herbert J. McKune Post 31, Sept. 4 at 8 p.m.

VFW Post 4076 meeting Wednesday, Sept. 10, 8 p.m. 105-B N. Main.

Regular business meeting Monday Sept. 8 at 8 p.m. in the VFW Hall; inspection meeting. All officers and chairman requested to be present and bring notebooks.

Lamaze Association of Ann Arbor is now holding classes at the Chelsea Community Hospital. If interested, call 761-4402, or 475-3316.

Senior Citizen Fun Nite every Friday evening at 7:30.

American Legion and Auxiliary hospital equipment available by calling Guy Freysinger at 475-1961.

American Legion Post 31 regular meeting, Sept. 4, 8 p.m. at the American Legion Home, Cavanaugh Lake.

Weekly Tuesday Nite Singles Club, dance, 9 p.m. to midnight, Ann Arbor "Y," with live band.

### Sugar Loaf Lake Youngsters Collect For MD Telethon

Two Sugar Loaf Lake youngsters got in on the Jerry Lewis Telethon for Muscular Dystrophy over the week-end. The pair, Tracy Harok and David DeSmith, collected \$29 from area neighbors. Tracy is the daughter of Mr. and Mrs. John Harok; David is the son of Mr. and Mrs. Gale DeSmith, both of Sugar Loaf Lake.

### Historical Society Resumes Meetings

After a two-month summer recess, the Chelsea Area Historical Society will hold their regular monthly meeting 8 p.m. Sept. 8 in the downstairs meeting room at the First Congregational church. Following the business meeting the guest speaker will be Mrs. Joseph McAllister, president of the Dexter Historical Society.



**TENNIS TROPHY WINNERS:** The annual Pierce Park tennis league awards picnic, like everything else scheduled outside last Saturday was rained out. However, the group, undaunted by the weather, simply held their picnic inside the high school gymnasium. Trophy winners, pictured standing from left, are Jerry Bulich, 2nd place junior boys; Jim Collins, 2nd place men's B league; Ken Kuzon, 1st place men's B league; John and Ann Schaffner, 2nd place mixed doubles; and Barb Branch, 2nd place women's doubles. Kneeling from left, coach and instructor Terry Schreiner; Tom Severn, 1st place junior boys; Arlys Wiseman, 2nd place women's B league; Louise Ponte, 1st place women's B league; Carol Kvarnberg, 1st place women's doubles; and Marian and Jim Sprague, 1st place mixed doubles. Mrs. Sprague was also on the women's doubles 1st place team. Not present for the photo was Amy Vaught, 2nd place women's doubles.



**CURBING FREER RD.** was a just a little more than a one day job thanks to a new slip-form machine which eliminates laying the forms, pouring the cement, removing the forms and continuing the same process. This small machine pictured in the foreground does the entire job. Cement drops into the form and is set as the machine moves slowly down the road. According to village administrator, Fritz Weber the job is expected to be finished this week if good weather continues. Weber added that the village will have to do some work in the area before the paving is done. As far as the sidewalks, "We hope they are in before winter," he remarked. The curb is being constructed by Ann Arbor Construction Co.

### Mark Blough Earns Army Promotion With MP Unit in Korea

U.S. Forces, Korea—Mark L. Blough, whose parents, Mr. and Mrs. Phil J. Blough, and wife, Pat, live at 15029 Grass Lake Rd., Grass Lake, was promoted to Army Specialist Four while serving as a military policeman with the 563rd Military Police Detachment here.

Largest commercial onion crops in Michigan were grown in Newa-go, Ottawa and Allegan counties in 1974 with a total of 2,139,000 pounds valued at \$11,310,000. This was 15 percent less than in 1973, both years notorious for bad weather for farmers. Still, we ranked fifth in the nation among onion producing states and were busy shipping the crop to many parts of the U. S. and overseas to various European countries.

## DEATHS

**Glenwood R. Novess Dies Unexpectedly Tuesday At Chelsea Hospital**

Glenwood R. Novess, 59, of 638 Flanders St., died unexpectedly at Chelsea Community Hospital Tuesday, Sept. 2. He had moved to Chelsea two weeks ago from Ann Arbor where he had resided for 24 years.

Mr. Novess was born Aug. 11, 1916 in Ypsilanti, a son of Frank and Elsie Schneider Novess. He married Ruth Yetta on Nov. 17, 1945. She survives. At the time of his death he was employed by the John E. Green Plumbing and Heating Co., of Ann Arbor, and the John E. Green Plumbing and Steamfitters Local 190 of Ann Arbor. He was a U. S. Army veteran of WW-II; a past master of Ann Arbor Lodge 544 F&AM, past high priest of Washtenaw Chapter No. 6 ARM, a member of Ann Arbor Commandery 13, Moslem Temple of Detroit, Washtenaw Shrine Club, ancient accepted Scottish right of Free Masonry and was a past monarch of Zal Gaz Grotto 54.

Surviving in addition to his widow, are his mother, Mrs. Alfred R. (Elsie) Hinz of Chelsea; three brothers, Philip Novess of Ann Arbor, Malcolm Novess of Chelsea and Frank Novess of Jackson; two aunts, Mrs. Guy (Helen) Breining and Mrs. Raymond (Lydia) Marz, both of Ann Arbor, several nieces, nephews and cousins.

Masonic memorial services will be conducted by Ann Arbor Lodge 544 at 7:30 p.m. Thursday, Sept. 4 at the Burghardt Funeral Home where services will be held at 1 p.m., Friday, Sept. 5 with the Rev. Clive H. Dickens officiating. Burial will follow in the Oak Grove Cemetery.

Friends may call at the funeral home.

**POT OK AT HOME**  
Juneau, Alaska—The Alaska Supreme Court has ruled that citizens have a right to possess marijuana for personal use in their own homes. However, the use of marijuana in public is outlawed.

**FARLEY CONSTRUCTION**  
522 HOWARD RD.  
ADDITIONS - REMODELING  
CONCRETE WORK  
REPAIRS

475-8265 or 475-7643

## BIRTHS

A son, Matthew Joseph, Aug. 22 in Honolulu, Hawaii, to Mr. and Mrs. Ronald Montague of Honolulu. Maternal grandparents are Mr. and Mrs. Ralph Parker of North Lake. Paternal grandparents are Mr. and Mrs. Stanley Montague of Chelsea.

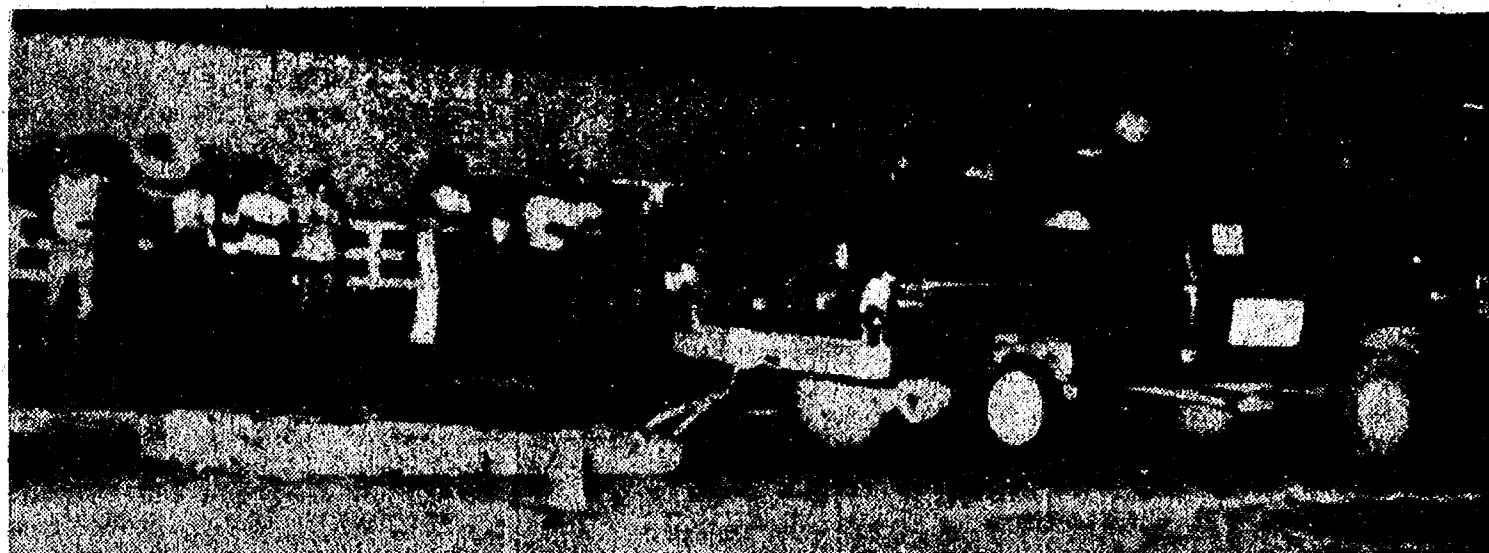
### Personal Notes

Mrs. Elsa Chupp will be celebrating her 75th birthday Sunday, Sept. 7. However, the real date of her birth is Sept. 2. Many of her children and grandchildren will be present for the celebration including Harry, Richard, Kenneth, Many, Michelle and Millie Wellhoff, Helen and Bill Joseph, her daughter and son-in-law visited her three months ago from California.

Telephone Your Club News To 475-1371.



**BICENTENNIAL STARS AND STRIPES FOREVER:** A rear view of the Senior Class, first prize Chelsea Fairgrounds last Saturday. float in the Youth division, was captured by The



**FOUR-WHEEL DRIVE PICK-UP PULL:** First evening was well received. Pictured here is one of the pick-ups in action. at the Chelsea Community Fair this year, the four-wheel drive pull held on the grounds Wednesday.

## 4-Wheel Drive Pull Started This Year

One of the "firsts" at this year's Chelsea Community Fair was the Four-Wheel Drive Pick-up pull held Wednesday evening in the arena. The pull was one of five pulls slated for each day during the fair. A total of 68 vehicles were entered in the event which was comprised of four weight classes:

For the first four-wheel pick up pull, the grandstands were filled, and according to those who attended, there was standing room only. The pull, unlike the tractor, tri-cycle and pony pulls is based on time, not on percentage of weight pulled.

In the Class 1050 division, 3,250 pounds and under, Steve Oliver of Adrian placed first with a time of 6:18. He drove a CJ5 jeep. In second place was Fred Young of Adrian who pulled in 7 seconds; third place went to Jeff Foster of Jackson for a time of 7.5 seconds. Fourth place to Jerry William of Grass Lake, 7:25.

Winners in Class 1051, 4,250 pounds and under, were Bill Smith of Dearborn Heights, 6; Chris Walbrook of Grass Lake, 6.5; John Hergert of Jonesville, 7; and Ron Mueller of Clinton, 11.

In the 5,250 pound and under class first place went to Terry Wilburn of Belleville, 5.6; second to Gary Cue of Clinton, 5.8; third to Wayne Suttles of Belleville, 6; and fourth to Greg Haskovich of Jackson, 6.

Jerry Donahue of Wayne took first in the 6,250 pound and under division. Second, Ron Maciejewski of Romulus, 6; third, Larry Moore of Adrian, 6.5; and Curt Alden of Chelsea, 6.5.

Bob Black of Romulus received first place for his time of 5.25 in the Open class. Second place went to Ron Maciejewski, also of Romulus, 5.50; third, Jerry Dona-

## Bicentennial...

(Continued from page one)

during the peak celebration period in each of the four areas. Spaulding said, "We are all aware of the tremendous amount of interest and participation that a celebration of this type creates and this is just the festival part of the celebration."

The National Bicentennial theme actually combines, aside from the festival, two other equally and perhaps more important themes; that of Heritage and Horizons.

Local general chairpersons are currently being recruited. The chart of organizations, consisting of seven divisions and 65 committees is completely blank; local headquarters are non-existent and preliminary plans have all barely gotten off the ground. As Spaulding says, "it's a time for action!"

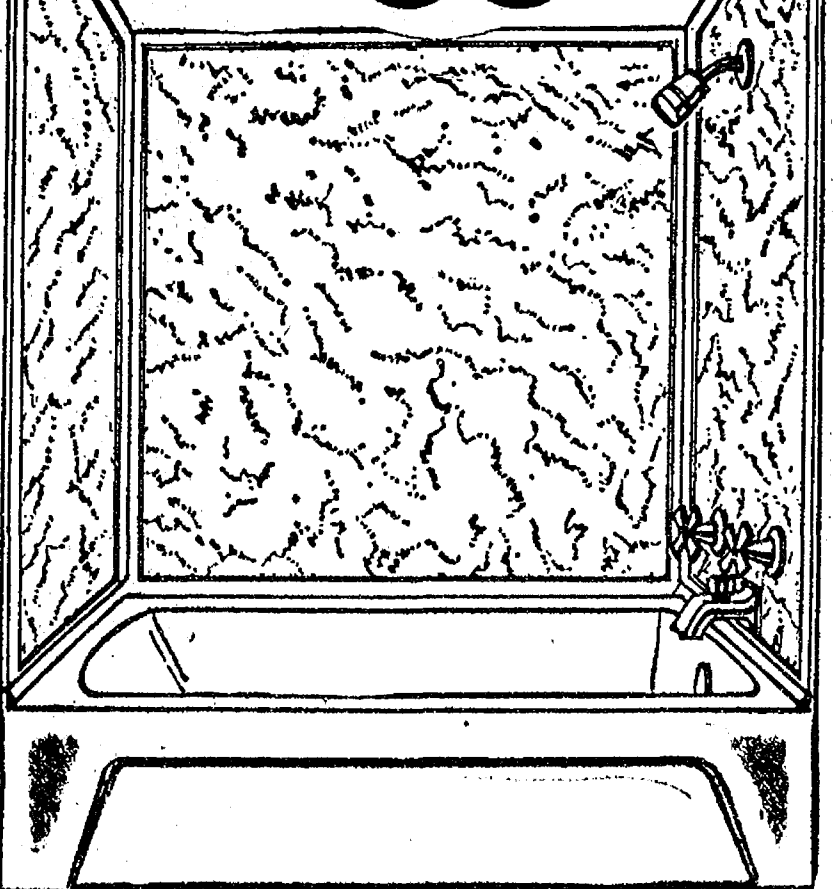
Spaulding and Dick Harvey, the acting chairman of the Chelsea Bicentennial committee said, "We will have a very successful Bicentennial Celebration and observation throughout the coming year of 1976."

### HONORED WITH STAMP

Los Angeles—The U. S. Postal Service has dedicated the commemorative 10-cent D. W. Griffith stamp in memory of the Hollywood film maker who was born 100 years ago. He was the creator of "Birth of a Nation."

## BEAUTIFY AND MODERNIZE YOUR BATH AREA

For As Little As  
**\$33.95**



A COMPLETE PACKAGE OF CUT-TO-FIT  
**MELAMINE FINISHED  
PANELS AND MOULDINGS**

DESIGNED WITH THE BEAUTY OF  
YOUR BATH AND THE VALUE  
OF YOUR HOME IN MIND  
INSTALL IT YOURSELF

Tub-Enclosure Kits In Stock

In These Decorator-Mural and Pattern Designs:

CREAMO MARBLE	\$38.95
MEDITERRANEAN MURAL	\$43.65
TROPIC LAGOON MURAL	\$43.65
WHITE LACE	\$33.95

(Prices Shown Are Cash-N-Carry)

**CHELSEA LUMBER CO.**

## Complete Enlarged Section RECORD and TAPE DEPARTMENT

POPULAR - COUNTRY & WESTERN - CLASSICAL  
CHILDREN'S - EASY LISTENING

NEW ALBUMS IN STOCK.

- "LOVE WILL KEEP US TOGETHER" By Captain & Tennille
- "CAPTAIN FANTASTIC" By Elton John
- "DRESSED TO KILL" By Kiss
- "HORIZON" By The Carpenters
- "BEAUTIFUL LOSER" By Bob Seger
- "FOUR WHEEL DRIVE" By BTO

**HEYDLAUFF'S**

113 N. Main St., Chelsea

Phone 475-1221





**AMAZING EXHIBITION:** Considering the conditions John Gurtner of Fremont, Ind., had to work under five days prior to the opening of the Chelsea Fair, it is amazing that this pair, a sheep and hog, responded to Gurtner's commands. Ruth Leach, fair secretary, says that the pair of Duroc hogs pictured in The Standard two weeks ago, became ill prior to the fair and had to be put to sleep. Gurtner, like all showmen, insisted that the show must go on. He got busy and trained a new hog and sheep to pull this small wagon for four days at the Chelsea Fair. Pictured with the pair is their trainer.



**PAUL ZAHN** of Chelsea displays a proud smile holding his trophy and Grand Champion blue ribbon for his first place in the light-heavyweight division of the tractor pull held Friday evening on the Chelsea fairgrounds. Zahn drove a 1961 830 Case. His tractor pulled 220 percent of its weight to win the award.



**HORSESHOE PITCHERS:** The first horseshoe pitching contest was held this year at the Chelsea Community Fair sponsored jointly by pitching enthusiasts Jim Daniels and Fred Petsch. The pair said the contest was so well received, with a total of 30 entries, that they hope to make it an annual event. Winners of the contest are pictured from left, first-place team, Stan Swarthout of Milan and Silas Grant of Ann Arbor; second-place team, Curt and John Day of Manchester. Not pictured were third-place team, Larry McGee and Don Wheeler of Manchester and fourth-place team, Jim Romine and Rodney Abdon of Dexter. It's no wonder that Swarthout won; he is rated as one of the 10 best pitchers in the state; his wife, Jean, has won and holds the World Champion Class B title and is state champ for 1971, '72 and '74. She says she hopes to retain this year's title. Together, the couple have 79 trophies. This one makes 80!

## REGULATION GYM CLOTHING

JUNIOR HIGH - SENIOR HIGH

LETTERED GYM TRUNKS

LETTERED GYM SHIRTS

STRIPE TUBE SOCKS

GYM SHOES - GYM BAGS

**STRIETER'S MEN'S WEAR**

"The Place To Go for Brands You Know"

## Area Students Earn Degrees at Central Michigan

Three Chelsea students and one Dexter student received degrees in graduating ceremonies in May at Central Michigan University, Mt. Pleasant. Commencement was held in the University's Sports Stadium. Commencement speaker was Rater Johnson, former Gold Medal Winner in the Olympic Games.

From Dexter was Sharon L. Heydlauff of Dexter-Chelsea Rd., bachelor of science in education with a speech major.

From Chelsea were Eileen Bristle, bachelor of science in education, physical education major; who graduated magna cum laude; Marcia Kelly, bachelor of arts in home economics; Terry Ann Kelly, bachelor of science, who graduated cum laude.

### Jaycee Auxiliary Gives Fire Extinguisher

A 2½-pound dry chemical fire extinguisher was given away by the Chelsea Jaycee Auxiliary at their Red Ball booth at the Chelsea Community Fair last week-end. Winner of the extinguisher is Randy Gierke of Dexter.

## Harriers Looking for Good 1975 Season

As the 1975 cross country season draws near the Chelsea Harriers are looking forward with "guarded optimism" toward it. The optimism is there because Head Coach Pat Clarke, will welcome back six veteran lettermen.

Heading the list of returnees is last year's most valuable runner, senior John Storey. Returning along with Storey are senior captain Bill Rademacher, juniors Rick Haller, Phil Frame, Morris Johnson, and Dean Thompson. Add to this base experienced JV runners from last year like junior Jeff Sweet and sophomore Mark Bucholz and "you have a very solid team," said Clarke.

According to Coach Clarke, the team appears solid, but how good they become depends upon their willingness to work and sacrifice toward their goals. So far in three weeks of practice Clarke reports that he has been fairly well pleased with the effort and attitude of the squad.

Newcomers who might add to the team strength before the season is over include sophomore Jerry Benjamin, freshmen Chris Minick,

Scott Beyer, Joe Marentette and Brian Herrick. Clarke said these runners have a great attitude and are willing to work. "They only need some competition for seasoning and some time to grow running-wise," he added. "So much for why the team is optimistic!"

This fall the Bulldogs face one of their toughest schedules ever. The two league teams that finished head of them in '74, S. Lyon and Brighton return with their entire teams intact from last year, in addition, Saline again appears strong and Dexter will be greatly improved. Clarke remarked "that gives us quite a challenge ahead."

In the non-league schedule such powers as Cascades co-champions Michigan Center and Jackson Northwest, third place state finisher, Lumen Christi, and always strong Tecumseh stand ready to give the local runners a run for their lives.

"Taking all this into account we have the term 'guarded optimism.' The schedule is tough and demanding. If the Bulldogs are up to the challenge and they appear to be at this point then this indeed could be a good year for the local harriers," he summarized.

## SEC Preview For Season

South Lyon: The defending champions look like champions in 1975. The Lions return with everyone from last year's unit, including three top runners in the league, John Stanford, Terri Teno, and Rich Lakvold. These runners alone would make any team tough. In addition the Lions return three additional senior lettermen to give (Continued on page 12)

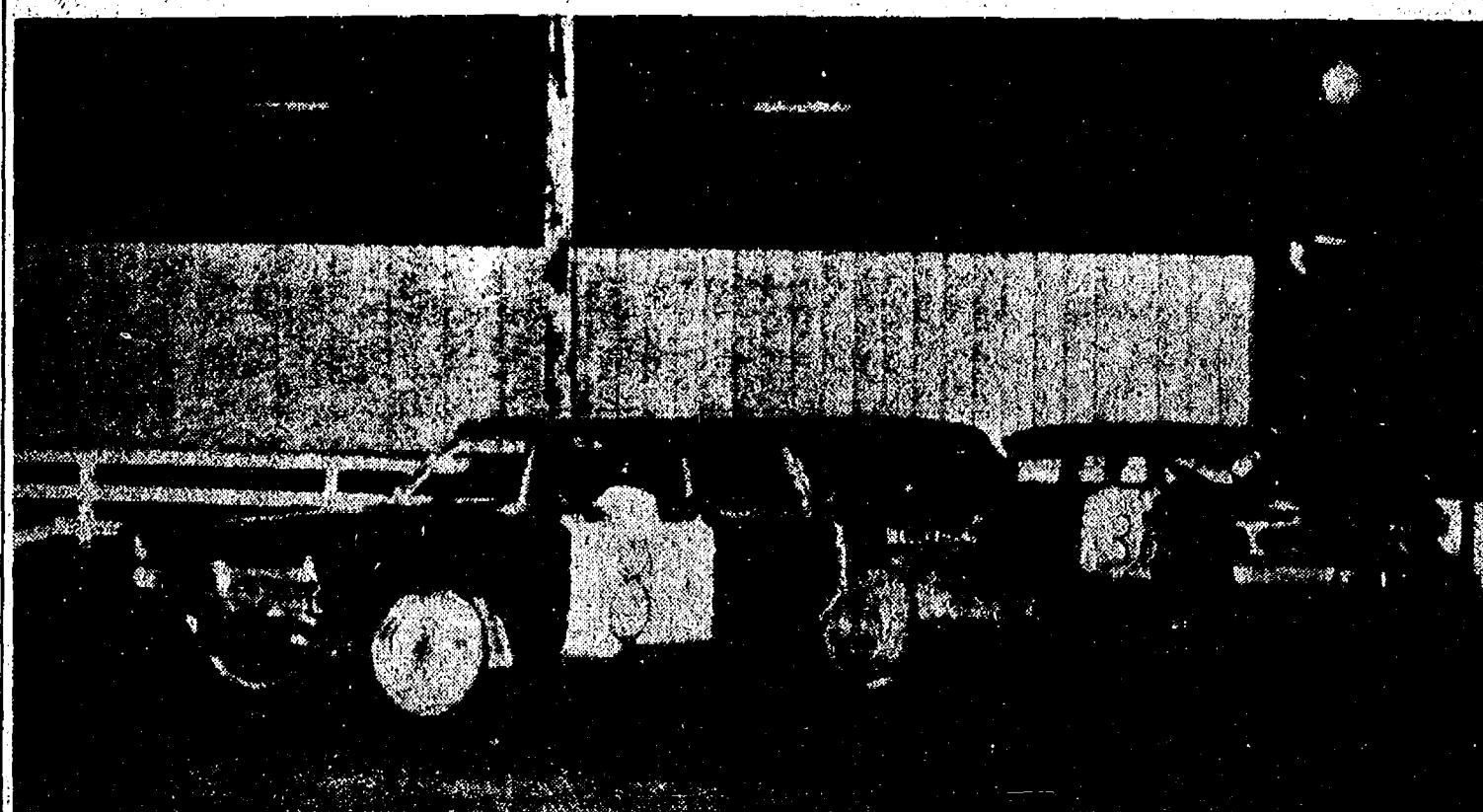
### Reward Offered for Identity of Driver In Hit, Run Incident

Phil McDaniel of 797 Glazier Rd., has offered a reward for the identification of a vehicle which hit his van Saturday morning while parked in the lot next to the Chelsea Fire Hall.

McDaniels said his 1972 blue Ford window van suffered damage on the right side sometime Saturday morning.

The hit and run incident was reported to Village police. No action has been taken.

Michigan has more than 11,000 inland lakes and more than 36,000 miles of streams.



**THE WINNER** of Thursday evening's Demolition Derby held on the Chelsea Fairgrounds is the black wagon, number 8. The car, from Belleville, held up well considering all the crashing hits it suffered during the Thursday evening bash.



**CRASH, BANG, BOOM:** Working hard to eliminate the other drivers, these crash-helmeted men bang and crash into each other all in the spirit of Thursday evening's Demolition Derby held on the Chelsea Fairgrounds. The event was so packed with spectators that the addition of 500 extra grandstand seats could not take care of the derby enthusiasts. Pictured here is Earl Pratt No. 15 being put out of action as two of the last three cars gang up on him.

## School Bus Rules Published

The transportation of pupils is a matter which involves many factors but the "safety" of all pupils is more important than any other factor. The drivers of Chelsea buses have attended safety meetings in the state and are fully informed about safe procedures and regulations in connection with bus transportation. They are extremely anxious to avoid accidents and to make the service satisfactory for all concerned. The drivers have an important part to play in the program but equally important is that of the pupils riding on the buses. Each pupil should be interested in the safety of himself and of the other members of the groups and the complete co-operation of all is necessary. The following list of items is given so that all may understand the problems and the procedures to be followed in the buses.

**PUPIL CO-OPERATION**  
Pupils must obey bus drivers promptly as they are in full charge (Continued on page 11)

# RICK'S MARKET

Just North of Chelsea on M-52

"The Friendly Store"

Phone 475-2898

**PURINA DOG CHOW**

50-Lb. Bag

**\$10<sup>49</sup>**

STEHOWER'S

**SIZZLE STEAKS**

18-Oz. Pkg.

**\$1<sup>49</sup>**

SPARTAN FROZEN

**SHOESTRING POTATOES**

1¼-Lb. Pkg.

**51¢**

FROZEN

**BLUEBERRIES**

1-Lb. Pkg.

**77¢**

12-OZ. CANS

**COCA-COLA**

8 pac

**\$1<sup>39</sup>**

2-PLY SPARTAN

**FACIAL TISSUES**

200-Ct. Pkg.

**49¢**

ALL FLAVORS DUNCAN HINES

**CAKE MIXES**

18½-Oz. Pkg.

**73¢**

If you haven't tried our in-store bakery goods  
... you've cheated your taste buds!

**WE BAKE 7 DAYS A WEEK**

A wide variety of goodies to weaken your  
will power, and treat your tummy!

ALSO: HOME-MADE SANDWICHES  
Warmed for You in A Minute.

## CERAMICS by JUDY

**FALL CLASSES  
BEGINNING**

**Please Phone 475-8369**







# WANT ADS

## - YOUNG -

We list and sell lake, country and town properties. Eugene Young, Real Estate & Builder, 878-3792, 11506 Dexter-Pinckney Rd., Pinckney 48169. x341f

Custom Built Homes  
Oh! We Remodel too  
You can count on us  
No Job Too Small  
Trim Inside & Out  
Siding Only If  
You Want to Finish  
Siding Aluminum, 5" Gutters  
Immediate Attention  
DALE COOK & CO.  
Estimates, Free

### BUILDERS

Please Call  
475-8863

## DALE COOK

CARPENTER WORK - Inside or out. Mr. Coburn, 475-2893. 121f

## TRENCHING

Water line or electric  
Phone 475-7978

Lakes Dug  
Bulldozing  
- FREE ESTIMATES -  
Phone 475-8121

## COMPLETE ALUMINUM SERVICE

Siding - Awnings - Repairs  
Gutters - Storm Windows  
Remodeling  
Free Estimates  
Call 475-9209  
Camelot Construction  
Chelsea, Mich. x121f

## Waitress Wanted

Must be over 18.  
Apply in person  
Monday thru Thursday  
after 4 p.m.

Thompson's Pizzeria  
Old US-12, Chelsea x12

GAS SPACE HEATER, like new. Suitable for large cottage, \$80 and bathroom, \$4. Ph. 475-7163. 12

# WANT ADS

FOR REAL DOLLAR SAVINGS be sure and see us before you buy any new or used car. Palmer Motor Sales, Inc. Your Ford Dealer for over 60 years. 21f

FOR SALE - Indian cents, postcards, books, foreign coins, Australian opals, and other articles. Lawrence E. Guinan, 1571 Sugar Leaf Lake. Call 475-2317. 371f

WEDDING STATIONERY - Prospective brides are invited to see our complete line of invitations and accessories. The Chelsea Standard, Ph. 475-1371. 81f

## Complete Body Repair Service

Bumping - Painting  
Windshield and Side Glass Replacement  
Free Pick-up & Delivery  
Open Monday Until 9  
CONTACT DON KNOLL  
FOR FREE ESTIMATE

## Village Motor Sales, Inc.

IMPERIAL - CHRYSLER  
DODGE - PLYMOUTH  
Phone 475-9661  
1185 Manchester Rd., Chelsea  
Hours: 8 a.m. to 6 p.m.  
Tues. thru Fri. Until 9 Monday.  
9 a.m. to 1 p.m. Saturday x401f

## GUTTERS

SEAMLESS aluminum eaves-troughs installed. White and brown. Call Wilson Metal Shop, Manchester, 428-8468. x81f

McCulloch  
Portable Generators  
Chain Saws

WE SELL, SERVICE,  
SHARPEN AND TRADE.

## Chelsea Hardware

## VACUUM CLEANERS

Authorized Electrolux  
sales and service  
James Cox  
428-2931, or 428-8638  
118 Riverside Dr., Manchester 481f

## Welcome Horses

3 ACRES with barn and fenced corral, more land available, living home with 2,320 sq. ft. living space. New carpeting, 4 bedrooms, massive lava stone fireplace. Asking in mid-50's.

Call

Willis Real Estate  
1-517-522-8481 or 1-517-522-8334 x12

CONSTRUCTION TRAINEE - No experience needed, we train. Excellent salary and benefits. Guaranteed job training for only 3-year enlistment with the U. S. Army. Call 665-3731 for appointment today. 21

WANTED TO RENT by Chrysler engineer and his family, 3-bedroom home from 4 to 7 months, in the Chelsea School District. Ph. 475-8326. x12

# WANT ADS

## NOW

Full Time  
Complete  
Body Shop  
Service

Stop in For An Estimate

## PALMER FORD

222 S. Main St.  
475-1301 271f

PIANO TUNING, Chelsea and area. Facilities for reconditioning and rebuilding. Used piano sales; reconditioned grands and verticals. E. Ecklund, 426-4429. x501f

SEE US for transit mixed concrete. Klumpp Bros. Gravel Co. Phone Chelsea 475-2830, 4920 Loveland Rd., Grass Lake, Mich. x401f

TRAVEL TRAILERS - 13-ft. and up, 10,555 ft. trailers. John R. Jones Trailer Sales, Gregory, Mich. Phone 488-2555. x431f

ELECTRICAL WIRING of all types New and rewiring. Ph. 428-4835. x201f

FOR RENT - American Legion Hall, \$50. Call 475-1824. 401f

WILLIAMSON HEATING and Cooling, sheet metal work. Licensed and insured. Steele & Son, (313) 475-2022 or (517) 596-2351. 421f

Automotive  
Rust Proofing  
Cars and Trucks

Village  
Motor Sales, Inc.  
IMPERIAL - CHRYSLER  
DODGE - PLYMOUTH

Phone 475-9661  
1185 Manchester Rd., Chelsea  
Hours: 8 a.m. to 6 p.m.  
Tues. thru Fri. Until 9 Monday.  
9 a.m. to 1 p.m. Saturday 211f

CHELSEA - 3-bedroom Ranch, 2 baths, sunken living room, family room with bar; located on Howard Rd. \$49,900. For an appointment call 475-7643. 511f

## CUSTOM BUILDING

LICENSED & INSURED  
FREE ESTIMATES  
TOTAL

## CONSTRUCTION SERVICES

- Residential, commercial and industrial  
- Garages  
- Remodeling - Additions  
- Aluminum Siding  
- Roofing  
- Trenching

SLOCUM  
CONTRACTORS  
& BUILDERS

Serving Washtenaw County  
For Over 20 years  
20700 OLD US-12  
CHELSEA  
Phone 475-8321 or 475-7611 221f

WAITRESS  
and  
WAITER WANTED

Applications now being taken to replace people going back to school. Full-time or part-time. Please apply in person.

Wolverine Bar  
Old US-12 at M-52, Chelsea x12

\$25 REWARD for return of lost brown brief case. Lost about July 2 in the Medical Center area. Please call Dr. Waldyke at 475-1321. 12

APT. FOR RENT - Upstairs, unfurnished except for refrigerator and stove. No children or pets. Ph. 475-8210. 111f

10% DISCOUNT - On all items thru Sept. at Bel-Mar Antique Glass Shoppe. Open week-ends or by appointment. Call Unadilla 1-488-2788 after 6:00 p.m. on weekdays for appointment/directions. x15

NO HUNTING  
SIGNS

Now available

## Chelsea Standard

FOR SALE - Float boat, 20' fiberglass pontoons, aluminum railing, collapsible buggy top \$300. Ph. 475-8724 evenings and Sunday. x12  
GIANT GARAGE SALE - Sat., Sun. Antiques, snowmobile, motor cycle, pie safe, plants, plant table, Evinrude motor. First house behind Inverness Country Club clubhouse. 12

# WANT ADS

SEAMLESS ALUMINUM eaves-troughs, roofing, siding, and carpentry work of all kinds. Experienced installers. All work guaranteed. For free estimate, call R. D. Kleinschmidt Co. 428-8836. x311f

## KETO USED CARS

8020 GRAND - DEXTER  
426-4535  
CARS BOUGHT AND SOLD x381f

## A fine selection of

## New and Used Cars

## for immediate delivery

Harper Pontiac  
Sales & Service  
475-1306  
Evenings, 475-1608

MUNITH AUCTION - 100 Main St., Munith, Mich. Auction every Sunday, 5 p.m. Danny Fleming, auctioneer. x121f  
STOCKBRIDGE, 13 acres, commercial, on M-52. (517) 851-8144. 351f

## D&G Allen Excavating

Septic Tanks and Drainfields  
Back Hoe and Dozing  
Sand, Gravel and Topsoil Hauled  
Phone (517) 851-8386  
or (517) 851-8278 431f

BRICK MASON - Brick work, block work, fireplaces, chimney repairs, homes and additions. Ph. 475-2584. x441f

## FENCE

SPECIALIZING in chain link fence, priced reasonable. All work guaranteed. Free estimates. Call Herb, 475-1716. 12

1985 OLDS 98 - Air cond., power windows, p.s., p.b., electric seat, good tires, plus 2 snow tires. \$200 or best offer. Ph. 662-0524. x91f

TYPIST WANTED - Part-time. For interview appointment, call Mr. Leonard, 475-1371. Chelsea Standard, 300 N. Main, Chelsea. 71f

WANTED - Interior-exterior painting, \$5.50 per hr. or by job. Guarantee all work. Ph. 971-5751. x501f

PAINTING - Exterior and interior. Quality workmanship, free estimates, references, reasonable rates. Ph. (517) 851-7055. x481f

FOR REMODELING, roofing, pole barns, call Dan Hughes, 994-9350. 421f

## BOWLING SHIRTS

Order now for 10-day delivery.

## Strieter's Men's Wear

PART-TIME WAITRESS - Black Sheep Tavern in Manchester, Ph. Cathy, 428-7000, between 9 a.m. and 11 a.m. x12

1-BEDROOM APARTMENT available in Manchester. Ph. Cathy at 428-8326 between 9 a.m. and 11 a.m. x12

BRAND NEW 2-bedroom home, full basement, large kitchen, lots of cupboards, closets. Lake privileges. 1 m m d i e occupancy. Owner, 4376 Patterson Lake Rd., Pinckney. Ph. 878-3627 or 878-6998. x12

DON'T merely brighten carpets... Blue Lustre them... no rapid resoling. Rent electric shampooer. \$1. Chelsea Hardware. 12

THIRD ANNUAL Chelsea Firemen's Ball, Saturday, Oct. 4. Tickets available by calling 475-2965, 475-7582, or 475-7319. 16

# WANT ADS

NEED A ROOF? Call Toth Building & Remodeling, (313) 498-2178. 411f

CAR & TRUCK LEASING. For details see Lyle Chriswell at Palmer Motor Sales, 475-1301. 491f

BUILDERS - House and barn roofing, all types of roof repair. aluminum storm windows and doors, aluminum siding and gutters, awnings, porch enclosures, garage and room additions, cement work. Call Joe Hayes for free estimates, Manchester 426-8520. x181f

MANAGERS NEEDED to replace managers who won't work. Send summary of interest and experience to A & N Associates, P.O. Box 41, Chelsea. x461f

## Old Orchard Furniture Refinishing

## ANTIQUES RESTORED

Old finish removed from wood or metal safely and economically.

513 Old Orchard  
Stockbridge, Michigan 49285  
(517) 851-8713 101f

FOR SALE - Sliding door hutch, on cabinet base, reasonable. Ph. 475-9238 or 475-2366. 12

FOR SALE - Nearly new double drain Youngstown kitchen sink. Used 3 years, like new, 11700 Waters Rd., Chelsea. Ph. 475-7882. 12

IN CHELSEA - Small, 2nd-floor furnished apartment. Heat furnished. For married-couples only. Ph. 475-8469 or 475-2018. 121f

FOR RENT - Year around cottage, Cavanaugh Lake, for married couple only. Ph. 475-8469 or 475-2018. 121f

MOVING SALE - Sat., Sept. 6, 9 to 5 p.m. Yard tools, floor scrubber, large table, wicker chair, books, clothing, bedspreads, typewriter, misc. 418 Wellington. 12

74 FORD Grand Torino 4-dr. Power brakes, power steering, rear window defroster, AM-FM stereo, 8-track, new tires. Phone 475-8984 after 6 p.m. x12

FOUND - Pair of wire rim glasses, on 1-94 near Chelsea. Ph. 1-227-7580. 12

OIL DRUMS - New condition, \$4. Ph. 475-7163. 12

FOR SALE - Avocado green General Electric dishwasher, \$150. Ph. 475-2877. 12

FOUND - 1 very special cat. Call 475-9261 and identify. 12

FOR SALE - 1969 Ford LTD, \$400. Ph. 475-2036. 13

FOR SALE - 11 1/2 Winnebago truck camper. Self-contained. \$900. Ph. (517) 522-8834. 12

FOR SALE - Leghorn hens; Maytag washer and dryer (bottled gas). Ph. 475-2363. 13

FOR SALE - Goat kids, one billy, one nanny, one Suffolk yearling ram. Ph. 478-7349. 12

FREE KITTENS - Phone 475-9068. 13

WANTED BY LOCAL BUSINESS - Person for office work to include light bookkeeping and typing. Normal business hours, 5 days. Retirement plan, Blue Cross, and life insurance available. Please send resume or qualifications including salary range desired, to: Box AU-21, care of Chelsea Standard. 13

FOR SALE - Used stove, Ph. 475-1686. 12

GARAGE SALE - Sunday, Sept. 7, all day. Tools, dishes, linens and other misc. items. Old US-12 E., house no. 12990. 12

WOULD LIKE to babysit in my home. Days only. Ph. 475-2592. 12

LOST - Tan male kitten, 5 mo. old. Phone Kevin, 475-1658. 12

MAYTAG WASHER and Sears dryer. Excellent condition, \$150. Ph. 475-8724 evenings and may call Sat., area code (517) 851-7053. x12

1969 DODGE 3/4-ton pick-up, \$450. 4 spd. Ph. 475-8011. x12

FOR SALE - 3 wire corn cribs, holds approx. 2,000 bushels each, good condition, \$200 ea. Ph. 475-2888. x12

FOR SALE - Dune buggy, street package, condition good, \$650. Also Snow Prince, snowmobile, XL300, 50 hrs. \$300. Ph. 475-1803. 12

# WANT ADS

REDUCE excess fluids with Fluidex. Lose weight with Der-a-Diet capsules. Chelsea Pharmacy. 18

72 KAWASAKI 750-100 h.p., all fiberglass. Wurgess, alloy wheels, dual disc, very quick! 126-3188 after 4 p.m. x81f

YARD WORK - Odd jobs, almost anything. Reliable 20-year-old. Reasonable rates. Call Steve at 475-8220. x12

FOR SALE - Twin size mattress and box springs, \$25. Royal portable typewriter, \$45. Eveready portable typewriter, \$25. 801 Flanders St. Ph. 475-2092. 12

FOR SALE - '68 Catalina, in good condition, good tires, 2 extra rims, new battery. Phone 475-1140. x111f

FOR SALE - Timothy seed, R. Lindeman. Ph. 426-3541 or 426-4332. x13

1965 BEL-AIR Chevrolet. Runs. 283 engine. \$75. Ph. 475-7103. x12

1965 CHEV. II for sale - 4-dr., red, 8-cyl., stick shift. Very good motor. \$200. Come after 6 p.m. 207 Buchanan St., Chelsea. x13

WANTED TO RENT - Garage or barn space to store 20-ft. boat. Ph. 761-5164. 12

TRANSMISSION SERVICE - Automatic and stick, auto electric and complete engine service. Ph. 475-2596. x12

NEED TUPPERWARE or would like to buy a party. Ph. 475-9386, anytime. x12

CHILD CARE available during the day. By day or week. Facilities for any age child. Ph. 475-8353. x101f

FOR SALE - Savage 308 deer rifle with scope. New. Two boxes of shells. Call 475-2776. 101f

72 OLDS - 4-door 98 Regency. Low mileage, all power, new tires, exhaust and battery. 475-7685 or 475-2030. 101f

FOR SALE by owner - Victorian home in village limits. Ideal location close to Chelsea schools. 2 or 3 bedrooms, large living room with fireplace, \$28,500. For appointment call 475-8222. 101f

## Cards of Thanks

## IN MEMORIAM

In loving memory of our beloved son and dearest brother, Mark Jeffrey Scott, who died one year ago Sept. 7, 1974. We live in memories garden, dear, with happy days we've known. And each thing you touched along the way is now a hallowed spot. Your gentle face and friendly smile with sadness we recall. You had a kindly word for each and died beloved by all. You are not forgotten, loved one, nor will you ever be, as long as life and memory last we will remember thee. We miss you now, our hearts so sore, as time goes by we miss you more and more, your loving smile, your gentle face. No one in this world can ever take your place. We can never erase the sadness or edit out the tears without your being here. So sadly missed by:  
Mother and Dad,  
Lisa, Barry, Kelly  
and Stacey.

THANK YOU  
We would like to thank all our neighbors and friends for their thoughtfulness for the floral offerings, masses, food and other remembrances of our husband and father. A special thank you to the staff of the funeral home, Father Baker, Father Umberto, and the Altar Society. Their kindness was deeply appreciated and will never be forgotten.  
The Family of George Eder.

THANK YOU  
We would like to express our sincere appreciation to all those who helped us at the time of the loss of our dear wife and mother. Thank you for all the thoughtful visits, calls and messages sent to us during this time.  
The family of  
Kathleen Bernath.  
Telephone Your Club News  
To 475-1371.



## TODAY'S THOUGHT

By LOUIS BURGHARDT

Scientists probe the unknown to determine the possibilities and probabilities with constant experimentation. Discoveries are made. Proof is established. The unknown becomes the known.

For some strange reason, some people say science and religion oppose each other. True, some scientists are agnostics and atheists. But through the years, most of the world's greatest scientists have realized knowledge of the nature of the physical universe is limited. They know a Higher Power, a more Knowledgeable Power exists. They know piece-meal bits of knowledge are released ONLY through the graciousness of a Higher Power than man. They realize life is a paradox. They realize humility makes man great. Charity makes a man rich in character. Forgiveness gives him magnanimity of spirit. Absence of envy and greed keeps his soul in order. These are only a few of the realities that prove a Higher Power exists; a Power that controls the limitations of science. . . . BURG-HARDT FUNERAL HOME, 214 East Middle St., Chelsea, Mich. Phone 475-1551.

# SPECIALS

FRESH, CRISP

Head Lettuce . . . . 2 for 43c

ICE BOX JAR

Stuffed Olives . . . . 70c

16-SLICE PKG. KRAFT

American Cheese . . . . 89c

12-OZ. PKG. NESTLE'S

Chocolate Chips . . . 95c

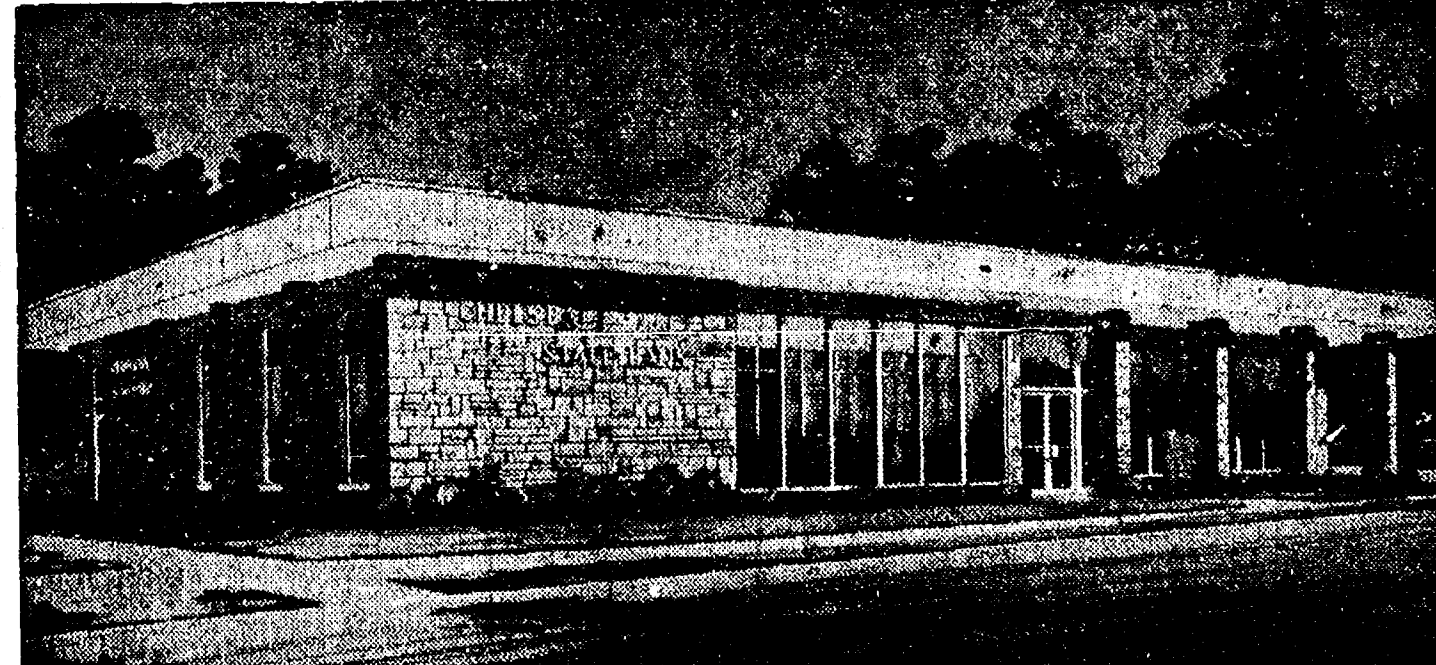
3-OZ. PKG. ECKRICH

Slender Sliced Meat, 2 for 79c

# KUSTERER'S

FOOD MARKET  
DIAL 475-2721 WE DELIVER

Direct Deposit of Your  
Social Security Checks into Your  
Free "62" Checking Plan  
at  
CHELSEA STATE BANK



If you're 62 years of age or older, you can deposit your Social Security check directly to your checking or savings account PLUS have FREE CHECKING too. Just complete the government form available at our Bank. Our staff will be happy to answer any questions you may have.



35 1/2 CUSTOMER HOURS  
Mon.-Thurs. . . . . 9-3  
Fri. . . . . 9-5:30  
Sat. . . . . 9-12  
305 S. MAIN  
Ph. 475-1355

# A1 USED CARS

AT OUR TRIANGLE LOT  
M-52 and Old Manchester Road

'75 PINTO 2-DR. \$2695  
Only 2,000 miles  
'74 LTD SQUIRE Wagon \$3695  
Loaded with extras  
'73 NOVA HATCHBACK \$2695  
Only 16,000 miles  
'73 GRAN TORINO 2-DR. \$2595  
One owner  
'72 DODGE CHARGER \$1795  
Power  
'72 GALAXIE 500 2-DR. \$1795  
Real clean  
'72 GALAXIE 500 4-DR. \$1795  
Factory air  
'71 FORD LTD WAGON \$1995  
Air conditioning  
'71 MAVERICK 2-DR. \$1595  
One owner

## TRUCKS



## Legal Notices

**MORTGAGE SALE**  
Default having been made in the terms and conditions of a certain mortgage made by CHARLOTTE GALLOWAY of Ypsilanti, Michigan, to CAPITAL MORTGAGE CORPORATION, a Michigan Corporation, Mortgagee, dated the 3rd day of May, 1972, and recorded in the office of the Register of Deeds for the County of Washtenaw and State of Michigan, on the 17th day of May, 1972, in Liber 1384 of Washtenaw County Records, on page 190, which said mortgage was thereupon assigned to the Federal National Mortgage Association, by assignment dated May 8, 1972, and recorded on May 17, 1972, in Liber 1384 of Washtenaw County Records, and thereafter assigned to the Leader Mortgage Company by assignment dated August 31, 1972, and recorded on March 23, 1973, in the office of the Register of Deeds for the County of Washtenaw in Liber 1432 of Washtenaw County Records, on page 871, on which mortgage there is claimed to be due at the date of this notice, for principal and interest, the sum of Nineteen Thousand Five Hundred & Eighty Eight (19,588.02) Dollars (\$19,588.02) and no suit or proceedings at law or in equity having been instituted to recover the debt secured by said mortgage or any part thereof, Now Therefore, by virtue of the power of sale contained in said mortgage, and pursuant to the statute in that behalf provided, notice is hereby given that said mortgage will be foreclosed by a sale at public auction to the highest bidder at 10:00 o'clock a.m., Local Time, on the 22nd day of September, 1975, at the West Entrance of the Washtenaw County Building in Ann Arbor, Michigan, (that being the place where the Circuit Court of said County is held), of the premises described in said mortgage, or so much as may be necessary to pay the amount due with interest at 7 per cent per annum and all legal costs and charges.

Said premises are located in the Township of Ypsilanti, Washtenaw County, Michigan, and are described as:  
Lot 7, Grove Park Homes Subdivision, according to the plat thereof as recorded in Liber 1384 of Washtenaw County Records, dated December 12, 1973, and recorded on December 18, 1973, in Liber 1384 of Washtenaw County Records, and assigned by said Mortgagee to CAPITAL MORTGAGE CORPORATION, dated December 12, 1973, and recorded on December 18, 1973, in Liber 1384 of Washtenaw County Records, on which mortgage there is claimed to be due at the date hereof the sum of Twenty Thousand Eighty and 32/100 Dollars (\$20,800.32), including interest at 8 1/2% per annum.

Under the power of sale contained in said mortgage and the statute in such case made and provided, notice is hereby given that said mortgage will be foreclosed by a sale of the mortgaged premises, or some part of them, at public vendue, at the West Entrance of the Washtenaw County Building in Ann Arbor, Michigan, at 10:00 o'clock a.m., Local Time, on the 22nd day of September, 1975.

Said premises are situated in the Township of Ypsilanti, Washtenaw County, Michigan, and are described as:  
Situations in the Township of Ypsilanti, Washtenaw County, Michigan, Lot 48, Dismal, according to the plat thereof as recorded in Liber 14 of Plats, Pages 49 and 50, of Washtenaw County Records, according to the plat thereof as recorded in Liber 14 of Plats, Pages 49 and 50, of Washtenaw County Records.

During the six months immediately following the sale, the property may be redeemed.

Dated: September 4, 1975.  
FEDERAL NATIONAL MORTGAGE ASSOCIATION  
Assignee of Mortgage  
George E. Karl,  
Attorney for Assignee of Mortgage  
1475 Penobscot Bldg.  
Detroit, Michigan 48226.  
Sept. 4-11-18-25-Oct. 2

**CHILSEA SCHOOL DISTRICT**  
WASHINGTON STREET  
CHILSEA, MICHIGAN 48118  
NOTICE TO BIDDERS  
PAVING ALTERATIONS TO  
CHILSEA MIDDLE SCHOOL  
AUGUST 20, 1975

Notice is hereby given that sealed bids will be received by Chelsea School District for portions of paving for the Chelsea Area Schools. The date and time for receipt of bids shall be as stated below. The proposals will be publicly opened and read aloud.

Plans, Specifications, Instructions to Bidders and Proposal Forms may be obtained by contacting the Construction Manager: CHILSEA AREA SCHOOLS, Washington Street, Chelsea, Michigan 48118 (313) 475-3377.

**CONSTRUCTION COORDINATORS, INC.**  
Gratiot Office Plaza  
23801 Gratiot Avenue  
East Detroit, Michigan 48021  
(313) 778-9001

Bid Guarantee Bonds will not be required.

The following separate proposals are to be received until 8:00 p.m., Monday, September 8, 1975.

BBB - CHILSEA HIGH SCHOOL  
CCC - SOUTH ELEMENTARY SCHOOL  
DDD - NORTH ELEMENTARY SCHOOL  
EEE - BEACH MIDDLE SCHOOL  
FFF - BUS SERVICE AND STORAGE

The scope of work for each proposal shall be as described in the contract documents. Separate bids are invited for each proposal and also combined bids will be considered.

Bids submitted in sealed envelopes marked as sealed bids for work of Proposal \_\_\_\_\_.

The right to reject any or all bids and to waive irregularities and make awards deemed advantageous to themselves. Robert N. Schaefer, Secretary of the Board, Aug. 28-Sept. 4

**NOTICE OF MORTGAGE SALE**  
Default having been made in the terms of a mortgage made by CAROL E. THOMAS AND MARY C. THOMAS, his wife, to CAPITAL MORTGAGE CORPORATION, a Michigan Corporation, Mortgagee, dated the 2nd day of May, 1972, and recorded in the office of the Register of Deeds for the County of Washtenaw and State of Michigan, on the 17th day of May, 1972, in Liber 1384 of Washtenaw County Records, on page 190, which said mortgage was thereupon assigned to the Federal National Mortgage Association, by assignment dated May 8, 1972, and recorded on May 17, 1972, in Liber 1384 of Washtenaw County Records, and thereafter assigned to the Leader Mortgage Company by assignment dated August 31, 1972, and recorded on March 23, 1973, in the office of the Register of Deeds for the County of Washtenaw in Liber 1432 of Washtenaw County Records, on page 871, on which mortgage there is claimed to be due at the date hereof the sum of Twenty Thousand Eighty and 32/100 Dollars (\$20,800.32), including interest at 7 per cent per annum.

Under the power of sale contained in said mortgage and the statute in such case made and provided, notice is hereby given that said mortgage will be foreclosed by a sale at public auction to the highest bidder at 10:00 o'clock a.m., Local Time, on the 22nd day of September, 1975, at the West Entrance of the Washtenaw County Building in Ann Arbor, Michigan, (that being the place where the Circuit Court of said County is held), of the premises described in said mortgage, or so much as may be necessary to pay the amount due with interest at 7 per cent per annum and all legal costs and charges.

Said premises are located in the Township of Ypsilanti, Washtenaw County, Michigan, and are described as:  
Lot 48, Grove Park Homes Subdivision, according to the plat thereof as recorded in Liber 14 of Plats, Pages 49 and 50, of Washtenaw County Records.

During the six months immediately following the sale, the property may be redeemed.

Dated: September 4, 1975.  
Home Savings and Loan Association  
Assignee  
Leithaus and Leithaus, P.C.  
Opal Plaza Professional Building  
Suite 215  
East Detroit, Michigan 48021  
Attorneys for said Assignee.  
Aug. 28-Sept. 4-11-18-25

**THE LEADER MORTGAGE COMPANY**  
Assignee of Mortgage  
KEYS AND KEYS  
177 First National Building  
Detroit, Michigan 48226  
Attorney for Assignee of Mortgage.  
Sept. 4-11-18-25-Oct. 2

**STATE OF MICHIGAN**  
**THE DISTRICT COURT**  
14th JUDICIAL DISTRICT  
Case No. CV 14-337  
WILLIAM E. FARRELL and VERLIE C. FARRELL, Plaintiffs,  
vs.  
WILLIAM E. BOWLING, II, Defendant.  
ORDER TO ANSWER  
John P. Kousch, Clerk  
Attorney for Plaintiff  
121 S. Main Street  
Chelsea, MI 48118

On the 1st day of August, 1975, an action was filed by William E. Farrell and Verlie C. Farrell, plaintiffs, against William E. Bowling, II, defendant, in this court, for the foreclosure of a land contract, the plaintiff being the seller and the defendant the purchaser, the subject thereof, being hereinafter described, said lands are described as follows:  
Lot Sixty (60) of Block Fourteen (14) of the Original Plat of the Village of Chelsea as recorded in Liber 1384 of Washtenaw County Records, Michigan.  
VS. HENRY D. ARKINSON, District Judge.

It is further ORDERED, that this case shall be heard by the Chelsea Standard, a newspaper published in Chelsea, Michigan, for three (3) consecutive weeks, commencing on the 11th day of September, 1975, at 10:00 o'clock a.m., at least ten (10) days prior to the date stated in the order.

Failure to comply with this order will result in a judgment by default against the defendant, and the complaint filed in this court.

Dated: September 4, 1975.  
Henry D. Arkinson, District Judge.  
Kousch & Kousch, Attorneys for Plaintiff  
121 South Main Street  
Chelsea, MI 48118  
Phone: (313) 475-5671. Aug. 21-28-Sept. 4

**MORTGAGE SALE**  
Default having been made in the conditions of a mortgage made by DONALD LESLIE GORRITZ, his wife, to ANN ARBOR MORTGAGE CORPORATION, a Michigan Corporation, Mortgagee, dated the 2nd day of May, 1972, and recorded in the office of the Register of Deeds for the County of Washtenaw and State of Michigan, on the 17th day of May, 1972, in Liber 1384 of Washtenaw County Records, on page 190, which said mortgage was thereupon assigned to the Federal National Mortgage Association, by assignment dated May 8, 1972, and recorded on May 17, 1972, in Liber 1384 of Washtenaw County Records, and thereafter assigned to the Leader Mortgage Company by assignment dated August 31, 1972, and recorded on March 23, 1973, in the office of the Register of Deeds for the County of Washtenaw in Liber 1432 of Washtenaw County Records, on page 871, on which mortgage there is claimed to be due at the date hereof the sum of Twenty Thousand Eighty and 32/100 Dollars (\$20,800.32), including interest at 7 per cent per annum.

Under the power of sale contained in said mortgage and the statute in such case made and provided, notice is hereby given that said mortgage will be foreclosed by a sale at public auction to the highest bidder at 10:00 o'clock a.m., Local Time, on the 22nd day of September, 1975, at the West Entrance of the Washtenaw County Building in Ann Arbor, Michigan, (that being the place where the Circuit Court of said County is held), of the premises described in said mortgage, or so much as may be necessary to pay the amount due with interest at 7 per cent per annum and all legal costs and charges.

Said premises are located in the Township of Ypsilanti, Washtenaw County, Michigan, and are described as:  
Lot 48, Grove Park Homes Subdivision, according to the plat thereof as recorded in Liber 14 of Plats, Pages 49 and 50, of Washtenaw County Records.

During the six months immediately following the sale, the property may be redeemed.

Dated: September 4, 1975.  
Home Savings and Loan Association  
Assignee  
Leithaus and Leithaus, P.C.  
Opal Plaza Professional Building  
Suite 215  
East Detroit, Michigan 48021  
Attorneys for said Assignee.  
Aug. 28-Sept. 4-11-18-25

**FISH FRY**  
COMPLETE DINNER  
Our own beer batter perch, fries, cole slaw, roll and butter, \$1.75. Take-outs 10c extra.  
EVERY FRIDAY 5 to 9 p.m.  
Bring Your Family!  
CHELSEA PUB

**POLE BUILDINGS**  
(GO UP EASILY...ECONOMICALLY)  
ANY TYPE - ANY STYLE - ANY SIZE  
Residential - Agriculture - Commercial  
PROMPT CONSTRUCTION DATES  
Low prices and high quality workmanship.  
OWEN CUSTOM BUILDERS  
LICENSED & INSURED - MANY SATISFIED CUSTOMERS  
JACKSON (817) 769-2669

**NOTICE OF MORTGAGE SALE**  
Default having been made in the terms of a mortgage made by BRIEN K. MOORE AND JANET J. MOORE, his wife, to CAPITAL MORTGAGE CORPORATION, a Michigan Corporation, Mortgagee, dated the 2nd day of May, 1972, and recorded in the office of the Register of Deeds for the County of Washtenaw and State of Michigan, on the 17th day of May, 1972, in Liber 1384 of Washtenaw County Records, on page 190, which said mortgage was thereupon assigned to the Federal National Mortgage Association, by assignment dated May 8, 1972, and recorded on May 17, 1972, in Liber 1384 of Washtenaw County Records, and thereafter assigned to the Leader Mortgage Company by assignment dated August 31, 1972, and recorded on March 23, 1973, in the office of the Register of Deeds for the County of Washtenaw in Liber 1432 of Washtenaw County Records, on page 871, on which mortgage there is claimed to be due at the date hereof the sum of Twenty Thousand Eighty and 32/100 Dollars (\$20,800.32), including interest at 7 per cent per annum.

Under the power of sale contained in said mortgage and the statute in such case made and provided, notice is hereby given that said mortgage will be foreclosed by a sale at public auction to the highest bidder at 10:00 o'clock a.m., Local Time, on the 22nd day of September, 1975, at the West Entrance of the Washtenaw County Building in Ann Arbor, Michigan, (that being the place where the Circuit Court of said County is held), of the premises described in said mortgage, or so much as may be necessary to pay the amount due with interest at 7 per cent per annum and all legal costs and charges.

Said premises are located in the Township of Ypsilanti, Washtenaw County, Michigan, and are described as:  
Lot 7, Grove Park Homes Subdivision, according to the plat thereof as recorded in Liber 1384 of Washtenaw County Records, dated December 12, 1973, and recorded on December 18, 1973, in Liber 1384 of Washtenaw County Records, and assigned by said Mortgagee to CAPITAL MORTGAGE CORPORATION, dated December 12, 1973, and recorded on December 18, 1973, in Liber 1384 of Washtenaw County Records, on which mortgage there is claimed to be due at the date hereof the sum of Twenty Thousand Eighty and 32/100 Dollars (\$20,800.32), including interest at 8 1/2% per annum.

Under the power of sale contained in said mortgage and the statute in such case made and provided, notice is hereby given that said mortgage will be foreclosed by a sale of the mortgaged premises, or some part of them, at public vendue, at the West Entrance of the Washtenaw County Building in Ann Arbor, Michigan, at 10:00 o'clock a.m., Local Time, on the 22nd day of September, 1975.

Said premises are situated in the Township of Ypsilanti, Washtenaw County, Michigan, and are described as:  
Situations in the Township of Ypsilanti, Washtenaw County, Michigan, Lot 48, Dismal, according to the plat thereof as recorded in Liber 14 of Plats, Pages 49 and 50, of Washtenaw County Records, according to the plat thereof as recorded in Liber 14 of Plats, Pages 49 and 50, of Washtenaw County Records.

During the six months immediately following the sale, the property may be redeemed.

Dated: September 4, 1975.  
FEDERAL NATIONAL MORTGAGE ASSOCIATION  
Assignee of Mortgage  
George E. Karl,  
Attorney for Assignee of Mortgage  
1475 Penobscot Bldg.  
Detroit, Michigan 48226.  
Sept. 4-11-18-25-Oct. 2

## District Court Proceedings

**Week of Aug. 26-29**  
Philip D. Murray was found guilty of possessing alcohol in a restricted area. Fines and costs, \$25.  
William Rupas pled guilty to the possession of intoxicants in a restricted area. Fines and costs, \$25, plus six months probation.  
William Rupas was found guilty of the possession of intoxicants in a restricted area. Fines and costs, \$50 plus six months probation.  
Douglas Forward was found guilty of having a dog at large. Fines and costs, \$25.  
Harry Richardson was found guilty of speeding. Fines and costs, \$21.  
Gregory Gardner appeared on a bench warrant and pled guilty to charges of improper plates. Fines and costs, \$50.  
Gary L. Zaleski pled guilty to the possession of open intoxicants in a restricted area. Fines and costs, \$25.  
Royal Thomas appeared on a bench warrant and pled guilty to charges of no proof of insurance. Fines and costs, \$50.  
Dean Drake pled guilty to charges of unnecessary noise. Fines and costs, \$18.  
Robert Snyder was found in violation of probation. He was sentenced to pay fines and costs of \$50; his probation was extended by six months.  
Michael Sylvester pled guilty to charges of driving without an operator's license on his person. Fines and costs, \$50.  
David Krauss pled guilty to speeding. Fines and costs, \$76.  
David Bauer pled guilty to charges of careless driving. Fines and costs, \$34.  
Dwight Loop pled guilty to driving on the wrong side of the road. Fines and costs, \$21.  
David J. Starrs was sentenced to pay fines and costs of \$200 on charges of driving while under the influence of liquor.  
Timothy J. Mammel was found guilty on charges of insufficient personal flotation devices. Fines and costs, \$11.  
David Lawrence pled guilty to charges of failing to yield the right of way. Fines and costs, \$31.  
David Cameron pled guilty to the possession of open intoxicants in a motor vehicle. Fines and costs, \$50.  
David Cameron pled guilty to the possession of open intoxicants in a motor vehicle. Fines and costs, \$50.  
Ronald Clay was sentenced to pay fines and costs of \$200, to one year probation and to attend the Alcohol Safety Action program on charges of driving while under the influence.

Charles West pled guilty to charges of careless driving. Fines and costs, \$34.  
Dwaine Renesmith was found guilty of being drunk and disorderly. Fines and costs, \$75.  
Michael Thomas pled guilty to charges of allowing an unlicensed person to drive a motor vehicle. Fines and costs, \$21.  
Gerold Maher pled guilty to charges of parking across a sidewalk. Fines and costs, \$10.  
Real education is not something to be confused with a degree from an institution of higher learning.



**PEEKING OUT:** The only thing visible through the downpouring rain on the Chelsea Kiwanis Club float in the parade was their Queen candidate and the 1975 Chelsea Fair Queen, Brenda Shadonn. The float, which depicted a well-sculptured hand and a white and black hand shaking was completely covered to preserve its paper-flower freshness. The Kiwanis entry, "Touch A Life," received fourth place in the adult division judging.



**KEEP IT COVERED:** A member of the sophomore class makes haste to keep their paper-flowered float covered and dry during Saturday's fair parade. The float, "Follow the Yellow Brick Road," and "Into the Future is the Class of '78" took third place in the Youth Division.

## Letters to the Editor

**An Open Letter to Other Football Mothers:**  
I ask you—if they can send a man to the moon, why can't some one invent a football practice uniform that doesn't get dirty? If I came upon that heap of wet earth anyplace except my basement floor, I'd bury it! (I've even found the dog sniffing suspiciously.)

We're all in this together and I'm sure your laundry room, like mine, looks like Bargain Day at the soap counter. I have dipped and rinsed and pre-soaked. I'm considering using the vacuum cleaner attachments but, with my luck, they would swallow a sock! I have shouted out, screamed out and coaxed out the dirt. I haven't used so much elbow grease since Minniehaha rubbed Hiawatha's deer-skins over the stones of a rippling brook. (Now, that gal had the right idea. At least, she was returning earth to earth instead of through her plumbing system!)

My soap powders and solutions (in pink, white and Chelsea blue) have dynamited those togs with cleaning power. The bleaches and softeners (I hope my son never finds out he smells Downy soft) have given their all. And the shirt (golly—there is a number on it) and pants and socks and belt usually "come back" to at least "football gray" or at best "off white."

I've considered suggesting to our Athletic Dept. that they buy "earth-tone" uniforms or maybe those "wipe off" plastic pads could be worn on the "outside." That maid-in-of-olde wasn't so dumb! Her knight wore shining armor and all she needed was a damp cloth.

Thanks also to the people from as far away as Jackson and Detroit who came only to find conditions unsuitable for their participation.

A thank you to all of the other participants: antique cars, industrial equipment, farm machinery, horses and riders, the Michigan 8th Regiment Band, and the Parade Marshal. Also clowns who braved the elements.

A final thank you to all of the people who took the time to view the parade. With the weather as it was it is a very heartwarming sight to see such community spirit. Yours Truly,

Parade Chairmen,  
James Gaken, Chief.  
Art Paul, Captain.

**To the Editor:**  
I am seeking men and officers who served aboard the mighty aircraft carrier, the USS TICONDEROGA, particularly those of WW-2, while there is time left. Every man who ever served on this fine ship is entitled to join our group. We will be having our next annual reunion this coming May at Ticonderoga, N.Y.

If interested, and for more details, write me, giving your rank, the division, and year(s) on board.

James H. Morgan, Jr.  
Big "T" Veterans' Assoc.  
Waterside Lane  
S. Berwick, Me. 03908

**PENALTY FOR POVERTY**  
Rich families spend less for food and transportation than poorer families. Families with after-tax income of \$5,000 spend 24.7 percent for food, 16.5 percent for transportation. Families with after-tax income of \$15,000 spend 19.2 percent for food, 14.1 percent for transportation. Housing takes almost 30 percent of income, regardless of take-home pay, however.

**Mobil-Toons**  
By GLENN  
"I've already checked my tires and they're all there!"  
No trouble lady, that's just part of our service!  
GLENN'S MOBIL SERVICE  
1622 M-52 & I-94  
CHELSEA, MICHIGAN  
Phone 475-1767  
GLENN HEIM PROP.

**VILLAGE TAXES ARE DUE and PAYABLE**  
At the  
CHELSEA MUNICIPAL BUILDING  
104 E. Middle St., Chelsea, Mich.  
DEADLINE: FRIDAY, SEPT. 19, 1975  
After Sept. 19, tax is transferred to the County Treasurer for collection.  
THERE WILL BE NO EXTENSION OF THIS DEADLINE DATE!  
Hours: 9 a.m.-5 p.m. Monday thru Friday  
WALLACE WOOD  
CHELSEA VILLAGE TREASURER

**SCHOOL HOUSE APARTMENTS**  
ON HARRISON STREET  
are pleased to announce that applications are being taken for September occupancy. HOTPOINT APPLIANCES - CARPETED AND DRAPED INDIVIDUAL HEATING AND AIR CONDITIONING  
Model will be open 3 to 6 Sept. 4-5, Sept. 9-10.  
For Further Information  
Phone (313) 475-1509 or 761-3025  
BUILDING BY WEBER HOMES  
MANAGEMENT BY R.E.T.S. ENTERPRISES, INC.

**NEW LISTING**  
Comfortable large home close to shopping center of village. Country kitchen, family room, screened porch, new garage. Bring offers.  
**Real Estate One**  
OF WASHTENAW  
AL KLEIS  
475-7322  
1196 M-52, Chelsea  
REALTORS  
475-8693

**SOUTHERN BOY MANOR MOTEL**  
Efficiency Units - By Day, Week, or Month  
13190 M-52  
PHONE (517) 851-4213  
(2 miles south of Stockbridge)

**CUSTOM BUMPING and PAINTING**  
FREE ESTIMATES - ALL MAKES  
Get the Best for Less!  
**FRANK GROHS CHEVROLET**  
Phone 426-4677 Dexter, Mich.

Read The Standard Ads for Regular Bargains!  
**FLETCHER & KLEIN, INC.**  
REALTORS  
Build your home with a walk-out basement on this rolling, 10-acre parcel, Chelsea schools. Only \$16,500.  
Beautiful pond frontage with this 10-acre. Dexter schools. \$17,500.  
20 miles to Ann Arbor and Stockbridge schools highlight this nice 4-acre parcel. \$9,750.  
**CALL JIM KONARSKIE**  
OFFICE: 426-3988 or HOME PH.: 498-2726

**Wanted Girl Scout Leaders**  
Assistant Leaders Wanted, Too.  
Why be a Girl Scout Leader? Because you care about girls, and girls care about you. You want to share good things with them.  
If you are a Leader, what do you do? You work with girls—little girls and big girls. You show them the many things you know. They learn from you, and you learn from them.  
You have ideas. The girls have ideas. You make plans, and the girls make plans. The plans turn into action. You work on projects. You go places and see things. You have troop meetings and meetings with other Leaders. You make friends. And you receive help whenever you need it.  
Thousands of men and women have brightened their lives as well as the lives of others by becoming Girl Scout Leaders. Be a Leader, and make some girls happy. It will make you happy, too.  
The Girl Scouts of the U.S.A. is the largest voluntary organization for girls in the world. It is open to all girls 7 through 17 who subscribe to its ideals as expressed in the Girl Scout Promise and Law. Founded in 1912 and incorporated in Washington, D.C., in 1915, it was chartered by the Congress of the United States in 1950. Girl Scouts is a growing organization. But in order to continue to grow, it needs Leaders—like YOU!  
If you can spare the time, you can become a Girl Scout Leader or an Assistant Leader. Helpers are also needed. To find out more, just mail the coupon below.

Mail this coupon for free literature.  
MURKIN VALLEY GIRL SCOUT COUNCIL  
P.O. BOX 539, YPSILANTI, MICHIGAN 48197  
Without obligation, please send me free literature telling how I can become a Girl Scout Leader, Assistant or Helper.  
Name \_\_\_\_\_  
Address \_\_\_\_\_  
City \_\_\_\_\_ State \_\_\_\_\_ Zip \_\_\_\_\_  
Telephone \_\_\_\_\_



## + Services in Our Churches +

**FIRST UNITED METHODIST CHURCH**  
The Rev. Olive Dickins, Pastor  
Thursday, Sept. 4—  
6:30 p.m.—Arthritis screening program in the large instruction room of the educational unit.  
7:30 p.m.—Board of Trustees will meet in the Litteral room.  
Sunday, Sept. 7—  
10:00 a.m.—Worship service. Nursery provided.  
10:30 a.m.—Church school.  
11:00 a.m.—Coffee and punch hour.  
Wednesday, Sept. 10—  
8:00 p.m.—Chancel choir.

**OUR SAVIOR LUTHERAN CHURCH**  
1515 S. Main, Chelsea  
The Rev. William H. Keller, Pastor  
Thursday, Sept. 4—  
7:30 p.m.—Christian Education committee.  
Sunday, Sept. 7—  
9:00 a.m.—Sunday school festival and Bible classes.  
10:30 a.m.—Worship with Holy Communion.  
12:00 p.m.—Picnic.  
Monday, Sept. 8—  
8:00 p.m.—Evangelism Committee meeting at church.  
Tuesday, Sept. 9—  
7:30 p.m.—Phoebe Guild.  
Wednesday, Sept. 10—  
4:30 p.m.—Confirmation class.  
8:00 p.m.—Choir.  
Thursday, Sept. 11—  
7:45 p.m.—Quarterly Voters Assembly.

**ST. THOMAS EVANGELICAL LUTHERAN**  
Ellsworth and Haab Rds.  
The Rev. Jerome Dykstra, Pastor  
Thursday, Sept. 4—  
8:00 p.m.—Choir rehearsal.  
Saturday, Sept. 6—  
9:00 a.m.—Pre-confirmation class, fifth graders and over.  
Sunday, Sept. 7—  
9:30 a.m.—Sunday school and Bible class.  
10:45 a.m.—Worship with Holy Communion.  
Tuesday, Sept. 9—  
4:15 p.m.—Confirmation class.  
Wednesday, Sept. 10—  
10:00 a.m.—Ladies Bible study.  
Thursday, Sept. 11—  
8:00 p.m.—Choir rehearsal.

**BAHA' FIRESIDE**  
Every Thursday—  
8:00 p.m.—At the home of Toby Peterson, 705 S. Main St. Anyone wishing to learn about the Baha' faith is welcome.

**SALEM GROVE UNITED METHODIST CHURCH**  
3320 Notten Rd.  
The Rev. Gerald R. Parker, Pastor  
Every Sunday—  
9:30 a.m.—Sunday school.  
10:30 a.m.—Worship service.

**ST. JACOB EVANGELICAL LUTHERAN CHURCH**  
12501 Rietmiller Rd., Grass Lake  
The Rev. Andrew Bloom, Pastor  
Every Sunday—  
9:00 a.m.—Worship service.  
10:15 a.m.—Divine services.

**GREGORY BAPTIST CHURCH**  
The Rev. Paul White, Pastor  
Every Sunday—  
9:45 a.m.—Sunday school.  
11:00 a.m.—Morning worship.  
6:00 p.m.—Young people.  
7:00 p.m.—Evening worship.  
7:30 p.m.—Thursday mid-week worship service.

**FIRST UNITED PRESBYTERIAN CHURCH**  
Undulla  
The Rev. T. H. Liang, Pastor  
Every Sunday—  
9:45 a.m.—Sunday school.  
11:00 a.m.—Worship service.

**CHELSEA MEDICAL CENTER**  
Every Other Wednesday—  
1:30 p.m.—Worship service.

**ST. PAUL UNITED CHURCH OF CHRIST**  
The Rev. R. J. Ratliff, Pastor  
Sunday, Sept. 7—  
Winter hours begin.  
9:00 a.m. and 10:30 a.m.—Church school.  
10:30 a.m.—Worship service. Congregational meeting.  
Tuesday, Sept. 9—  
3:30 to 4:30 p.m.—Joyful Noise Choir rehearsal.  
7:30 p.m.—Women's Fellowship Board.  
7:30 p.m.—Spiritual Life department.  
Wednesday, Sept. 10—  
3:30 to 4:45 p.m.—Junior Choir rehearsal.  
8:00 p.m.—Confirmation orientation with parents.  
Thursday, Sept. 11—  
7:00 to 8:30 p.m.—Junior High Fellowship.

**ZION LUTHERAN CHURCH**  
Corner of Fletcher, Westers Rds.  
The Rev. John R. Morris, Pastor  
Sunday, Sept. 7—  
9:00 a.m.—Sunday school.  
10:15 a.m.—Worship with Holy Communion.  
Wednesday, Sept. 10—  
9:30 a.m.—Chancel Ministerial fellowship at St. Paul's.  
8:00 p.m.—Church council.

**NORTH LAKE UNITED METHODIST CHURCH**  
The Rev. David Stiles, Pastor  
Sunday, Sept. 7—  
7:30 a.m.—Early morning worship.  
10:00 a.m.—Worship service.  
11:00 a.m.—Church school.

**BETHEL EVANGELICAL AND REFORMED CHURCH**  
(United Church of Christ)  
Freedom Township  
The Rev. Roman A. Reineck, Pastor  
Every Sunday—  
10:00 a.m.—Worship service.

**CHELSEA BAPTIST CHURCH**  
377 Wilkinson St.  
The Rev. James Stacey, Pastor  
Every Sunday—  
9:45 a.m.—Sunday school for the whole family.  
11:00 a.m.—Morning worship service and children's church.  
7:00 p.m.—Evening service, informal singing, sharing, study and discussion. (Nursery care provided for all services).  
Home Bible Studies each week in the homes of the leaders.  
Teen Ministry, Sunday at 6 p.m. and study groups during the week.

**CHURCH OF JESUS CHRIST OF LATTER-DAY SAINTS**  
Meetings at  
St. Barnabas Episcopal Church  
2090 Old US-12  
Every Sunday—  
11:00 a.m.—Priesthood meeting.  
12:30 p.m.—Sunday school.  
5:30 p.m.—Sacrament meeting.

**CHURCH OF CHRIST**  
1889 Old US-12, East  
Evangelist John M. Hamilton  
Every Sunday—  
10:00 a.m.—Church school.  
11:00 a.m.—Worship service.  
Nursery will be available.  
6:00 p.m.—Worship service.  
Every Wednesday—  
7:30 p.m.—Bible study.

**ST. JOHN'S EVANGELICAL AND REFORMED CHURCH**  
(United Church of Christ)  
Francisco  
The Rev. Virgil King, Pastor  
Every Sunday—  
10:30 a.m.—Worship service.  
Sunday school.

**FIRST CHURCH OF CHRIST SCIENTIST**  
1883 Washtenaw Ave., Ann Arbor  
Every Sunday—  
10:30 a.m.—Sunday school, morning service.

**CONGREGATIONAL CHURCH**  
(United Church of Christ)  
The Rev. Carl Schwarm, Pastor  
Sunday, Sept. 7—  
10:30 a.m.—Sunday school. Worship. Promotion Sunday.  
Monday, Sept. 8—  
7:00 p.m.—Board of Trustees.  
7:30 p.m.—Deacons. Christian education.

**ST. MARY CATHOLIC CHURCH**  
The Rev. Fr. David Philip Dupuis, Pastor  
Mass Schedule:  
Every Saturday—  
4:00-6:00 p.m.—Confessions.  
7:00 p.m.—Mass.  
Immediately after 7 p.m. Mass—Confession.

**IMMANUEL BIBLE CHURCH**  
145 E. Summit St.  
The Rev. LeRoy Johnson, Pastor  
Every Sunday—  
9:45 a.m.—Sunday school, nursery provided.  
11:00 a.m.—Morning worship, nursery provided.  
7:00 p.m.—Evening worship.  
Every Wednesday—  
7:30 p.m.—Family hour, prayer meeting, and Bible study.

**ST. BARNABAS EPISCOPAL CHURCH**  
2090 Old US-12  
The Rev. Jerrold Beaumont  
B.S.P., Priest  
Rectory 475-2003  
Church 475-8818  
Every Sunday—  
9:00 a.m.—Holy Communion, first, third, and fifth Sundays.  
9:00 a.m.—Morning Prayer, second and fourth Sundays.

**NORTH SHARON BIBLE CHURCH**  
Sylvan and Washburne Rds.  
The Rev. William Enns, Pastor  
Every Sunday—  
10:00 a.m.—Sunday school. (Nursery will be available.) Junior church classes.  
11:00 a.m.—Worship service.  
6:00 p.m.—Senior High Youth meeting. Youth Choir.  
7:00 p.m.—Evening worship service. (Nursery available.)  
All services interpreted for the deaf.

**WATERLOO VILLAGE UNITED METHODIST CHURCH**  
8118 Washington St.  
Every Sunday—  
11:15 a.m.—Worship service.

**WATERLOO FIRST UNITED METHODIST**  
Parks and Territorial Rds.  
Every Sunday—  
9:15 a.m.—Morning worship.  
10:15 a.m.—Sunday school.

**ST. JOHN'S UNITED CHURCH OF CHRIST**  
Rogers Corners  
The Rev. Carl Asher, Pastor  
10:30 a.m.—Worship service.

**FIRST ASSEMBLY OF GOD**  
The Rev. Thode B. Thodeson, Pastor  
Every Sunday—  
9:45 a.m.—Sunday school.  
11:00 a.m.—Worship service.  
7:00 p.m.—Midweek services.  
Every Wednesday—  
7:00 p.m.—Christ's Ambassadors.  
Every Friday—  
1:00 p.m.—Ladies Bible study.

**METHODIST HOME CHAPEL**  
Chaplain Ira Wood, Pastor  
Every Sunday—  
8:45 a.m.—Worship service.

"YOU CAN BET ON US": Members of the Chelsea High Junior class rode in the Saturday fair parade despite the downpour. Umbrellas and a tarp made of cleaners bags provided some protection for the float and its riders. The float which featured a number of gambling themes took second prize in the Youth Division.

## CHELSEA VILLAGE COUNCIL PROCEEDINGS

September 2, 1975  
Regular Session.  
This meeting was called to order at 7:30 p.m. by President Pennington.  
Present: President Pennington, Administrator Weber and Clerk Neumeyer.  
Trustees Present: Borton, Johnson, Rowe, Dimoch, Galbraith and Wood.  
Others Present: Police Chief Meranuck, Zoning Inspector Goltra, Civil Defense Director Wade, Curt Farley, James Graue, C. Stewart, and B. J. Wright.  
The minutes of the August 19, 1975 meeting were read and approved.

Bids were received for construction of improvements to the village's Sanitary Sewer Trunk System. Discussion of the bids with representatives of two of the bidding companies followed.  
A letter from James Graue was read, recommending awarding the bid to Doug Higgins, the low bidder of the completed bids.

Motion by Johnson, supported by Borton to accept the bid of Doug Higgins, low bidder of the complete bids, for unit prices quoted. Roll call: Yeas all. Motion carried.  
Other bids were as follows: Del Young, \$49,508.02; Dunigan Bros., \$49,884.75; J. P. Hart, \$53,750.00; Stewart & Son, \$39,701.00; Union Construction, \$61,095.00.

A new fee structure for site plan review was submitted by Schmitt and Barkley as per Council's request. This proposed fee structure was reviewed and discussed.  
Motion by Wood, supported by Johnson, to accept the proposed new fee structure for site plan review as submitted by Schmitt and Barkley except the "Fees for Subdivisions" section. Roll call: Yeas all. Motion carried.

The first quarter budget was reviewed and discussed.  
The Council discussed the Recreation Council's budget and future plans.  
Motion by Dimoch, to reimburse the Recreation Council \$1,500.00 for salaries. Roll call: Yeas all. Motion carried.

A letter was received from Schmitt and Barkley requesting a ten percent (10%) raise in their fees. This request is being studied.  
Motion by Borton, supported by Galbraith, to donate \$50.00 to the American Legion Post No. 31. Roll call: Yeas all. Motion carried.

The Council discussed its affiliation with the Huron River Watershed Council.  
A letter was received from Consumers Power Company regarding sharing cost on construction of new power supply plants.

## O Son of Being!

My love is My stronghold;  
he that entereth therein is  
safe and secure, and he that  
turneth away shall surely  
stray and perish.

BAHA' SCRIPTURES.

## School Bus Rules Apply to Everyone

(Continued from page six)  
of buses and pupils while in transit, transfer, loading and unloading. Students who do not respond to the bus driver's requests will lose their rights to ride the bus.  
Pupils should be on time at the designated bus stops. Buses cannot wait.  
Pupils should stay off the roadway at all times while waiting for buses.  
Pupils should cross in front of a bus when crossing a highway, to enter or leave the bus.  
They should wait until the bus has come to a stop before attempting to enter or leave the bus.  
They should keep their hands and heads inside the bus at all times.  
There should be no moving around or changing of seats on buses.  
There should be no loud talking, but conversation or singing in normal tones is permissible.  
Any student causing trouble by teasing, pulling hair, scuffling, or using unkind language will be warned, and on a second offense, suspended from riding.  
Throwing articles of any kind in a bus is more dangerous than anything else, and it will not be tolerated.  
Any damage to a bus should be reported to the driver at once.  
Any student disfiguring or mutilating a bus will be required to pay for the damage, and will be denied further use of buses.  
Pupils should help keep buses clean, sanitary and orderly.  
Pupils may have to walk as far as a half to one mile to bus stops, if necessary.  
Students will not be allowed to eat on the buses.  
Pupils are expected to co-operate with monitors.  
Complete quietness must be observed in the bus when approaching a railroad crossing.  
Any student living in the Chelsea School District is entitled to transportation without charge to and from school if:  
1. He lives outside the village limits.  
2. If he lives within the village limits and he is physically unable to walk to school.  
3. Traffic and road conditions have been declared unusually hazardous.  
Stations and bus routes will be established by the superintendent of schools and the bus manager with reference to road conditions, student convenience, safety and economy of operation. Stations and routes are subject to change as conditions warrant, due notice being given.  
Drivers have authority to discharge from the bus only at home or at school, any student or students who do not co-operate as ladies and gentlemen.  
In the event that the buses do not run because of snow, ice, etc., the announcement will be made over radio stations WJR, WNRX, WPAG and CKLW.  
Three of America's top industrial corporations and 21 of its top 500 businesses are headquartered in Michigan.

## Can't You Count?

The late Albert Einstein was an amateur violinist. Once, at Princeton, he was visited by Jascha Heifetz, George Plagorski and Arthur Rubinstein. They suggested that Rubinstein join them in a little chamber music. He quickly produced his violin and the group began a delicate Mozart quartet. After a few moments, Rubinstein looked up in annoyance. "My dear Dr. Einstein," he demanded, "what is wrong with you? Can't you count?"  
Never underestimate your own ability; others will do it for you.

## GALLUP POLLS

Twenty-five years ago, 51 percent of Americans (53 million adults), believed public funds should be used to give free bus service and free books to children in regressive schools. Today, a similar poll reveals that 48 percent (58 million adults), favor such support.

## Reports of Area Club Activities Always Welcome

With the fall season nearly upon the community, many of the organizations which traditionally suspend meetings during the heat of summer, will be holding their regular meetings and special activities once again.  
The Standard welcomes notices of club meetings and group activities, and is happy to include such information in the Community Calendar. Club secretaries are urged to contact The Standard office, 300 N. Main St., or phone 475-1371, to give advance notice of meetings and to report follow-up news accounts of their organizations.

## CARPENTERING REMODELING

ALUMINUM SIDING - KITCHENS PATIOS - GARAGES  
PHONE 475-7474  
CHARLES ROMINE  
Licensed Contractor  
18027 Old US-12  
Chelsea

## The Vanishing American

Today's dairy farmer milks cows on the edge of a chasm. Standing on one foot. In a high wind.  
From his precarious vantage point, he sees increasing costs of such production necessities as seed, feed, fuel and fertilizers; and he sees a farm income declining by comparison.

About half of the U. S. dairy farmers in business five years ago no longer are. In Michigan, the nation's sixth-ranking dairy state, the number of dairy farmers has dropped from about 14,000 a decade ago to 7,700 last year. The number is expected to be 4,500 by 1980.

Today's dairy farmer knows he cannot stand alone. He knows he needs an ally. And for 5,400 of the state's 7,700 dairy farmers, that ally is MMPA, a milk marketing cooperative owned and controlled by those it serves.

MMPA, through a variety of service and marketing programs, pledges itself to work for the betterment of its dairy farmer members. MMPA works for a fair return on dairy farmers' investments and works to maintain stability in the complex arena of milk marketing.

Some of MMPA's programs also benefit consumers. The Association encourages high milk production which, combined with sound and positive marketing practices, assures ample milk for Michigan consumers. MMPA also promotes good dairy herd management practices among its members to assure that milk sent to market under the MMPA banner is of highest possible quality.

Dairy farming is the first-ranking segment of the state's No. 2 industry: Agriculture.

And we at MMPA are dedicated to the belief that the Vanishing American is important and to the belief that this great natural resource—the dairy farming industry—is worth preserving.

Michigan Milk Producers Association



## MARK IV LOUNGE

PHONE 475-1951

1198 M-52

CHELSEA

## BOWLERS!

We need bowlers to complete our fall schedule in the following leagues, starting Sept. 2, 1975:

SUNDAY MIXED (Bowls every other week)	6 p.m.
MONDAY MEN'S LEAGUE	9 a.m.
TUESDAY LADIES LEAGUE	10 a.m.
THURSDAY MEN'S LEAGUE	10 a.m.
THURSDAY MEN'S LEAGUE	6:30 p.m.
THURSDAY LADIES OR MIXED	9 p.m.
FRIDAY MIXED	9 p.m.

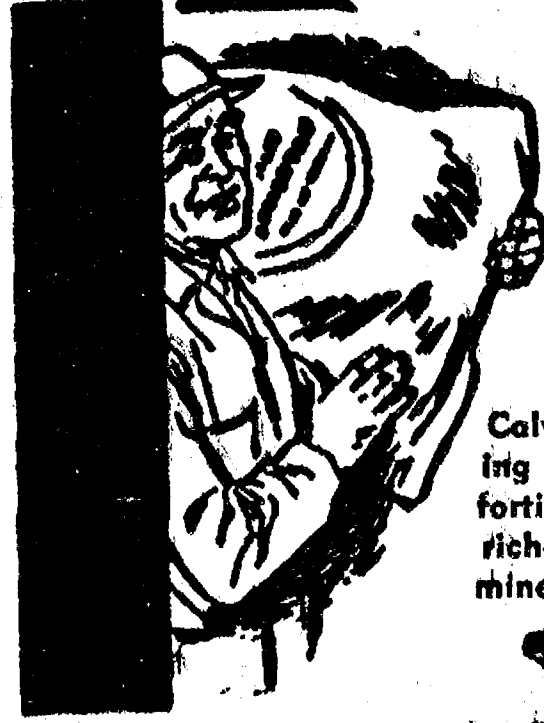
## JUNIOR BOWLERS!

REGISTRATION: SEPT. 6, 9 a.m. to Noon  
Up to 10-Year-Olds ..... Pequot Division  
13 - to - 16 ..... Junior Division  
11- & 12-Year-Olds ..... Prep Division  
16- to 18-Year-Olds ..... Major Division

BOWLING BALLS, BAGS, SHOES  
NOW IN STOCK.

**CHELSEA LANES, Inc.**  
1198 M-52  
CHELSEA

PHONE 475-8141



Faster gains from better

## FEEDS

Calves get growing and gaining faster, on our balanced, fortified Calf Feed... enriched with needed vitamins, minerals.

Complete feeding rations for all your livestock, poultry.

**FARMERS' SUPPLY CO.**

PHONE 475-1777





STEVE GRAU's lamb once again took the Grand Champion individual award at the Chelsea Community Fair this year. The 118-pound lamb sold to Michigan Livestock for \$1.80 per pound. Pictured with Grau (right) is the Michigan Livestock buyer.



HUNGRY HOG: Karen McCalla's Grand Champion individual hog is oblivious to the fact that he is being photographed. All he is interested in is eating. The 213-pound animal brought Karen \$1 per pound. The buyer was Robert Kushmaul of Washenaw Crop Service. Karen is pictured at right with Kushmaul.



RESERVE CHAMPION LAMB: This prize-winning animal owned by Matt Grau (right) was auctioned off to Robert Thornton during the Wednesday Livestock sale at the Chelsea Community Fair. The 115-pound lamb brought \$1.50 a pound.



GRAND CHAMPION PEN OF HOGS, raised by Gordon McCalla, sold to the Michigan Livestock Exchange for 70 cents a pound. The total weight of the three, 612 pounds. Pictured with Gordon (right) is the Michigan Livestock buyer.



THIS PAIR OF LAMBS weighing a total of 208 pounds brought 75 cents a pound for their owner, Matt Grau. Grau's pen also won the reserve champion award at the Chelsea Community Fair last week. Pictured is a representative for the buyer, G. E. Wacker, Grau and a loyal friend.

## SEC Preview for '75

(Continued from page six)

them a very experienced seasoned team in '75.

**Brighton:** The Brighton Bulldogs fought South Lyon tooth and nail last year only to lose by a mere two points in the league meet. This year the Bulldogs, like the Lions, return everyone from last year's team that finished with an 11-2 record. Leading the list of returnees is the defending league champion Tim Proulx. Proulx is fast developing into one of the finest distance runners in SEC history as seen by looking at his spring times of 4:29 in the mile, 9:45 in the 2 mile and 2:03 in the half mile. Along with Proulx the Bulldogs return senior Paul Mason, juniors Drake Vader, Gary Fredovich, and sophomore Sean Hurley. The Bulldogs must be favored to give South Lyon all they want in '75.

**Saline:** The Hornets appear dangerous in '75. Returning top league runners like juniors Doug Fett and Don Miller give the Hornets two deadly stingers to start the season. To go with this add veterans like seniors Steve Smith and Rock Wagner give the team a solid nucleus. The Hornets, however, need to find some team depth if they are to be a competitive factor in '75.

**Dexter:** For the Dreadnaughts the problem is depth; their lack of it. Last year the Dreadnaughts had three good runners, but nothing behind them. The three seniors Bruce Vall and Jeff Toma and sophomore Gary Greenfield

will return. If the Dreadnaughts could find a few more solid runners they might surprise a few teams this season.

**Navi:** The Wildcats lost quite a few of their top senior runners; however, they should be rebuilding this year.

**Milan, Lincoln:** While both of these schools expressed interest in fielding cross country teams for the '75 season there is not as yet anything definite.

Take a trip to Michigan's cabbage patches and you'll find 5,000 acres of commercial fields producing in 1974 an \$2.2 million pound crop valued at \$3,431,000. These large, solid heads, firm and crisp, are primarily grown commercially in Monroe, Wayne, Macomb, St. Clair, Kent, Ottawa, Bay and Saginaw counties.

Among Lake Michigan's beautiful orchards, we find Michigan's major pear crop grown in Allegan, Berrien, Oceana and Van Buren counties. These farmers grow mainly the Bartlett pear and most of the crop goes to canneries. Up by 11 percent in 1974, the 10,500 ton crop was valued at \$1.7 million to place Michigan fifth among the states.



RESERVE CHAMPION INDIVIDUAL HOG: This 225-pound hog belonging to Doug Welshans (right) brought the highest price among the hogs at Wednesday's livestock sale. John Klink (left) of Klink Excavating purchased the animal for \$1.05 per pound.

### 1975 Cross Country Schedule

Tuesday, Sept. 9	Michigan Center and Stockbridge	Home
Thursday, Sept. 11	Tecumseh	Away
Tuesday, Sept. 16	Jackson Lumen Christi	Home
Thursday, Sept. 18	Novi	Home
Saturday, Sept. 20	Olivet Invitational	
Thursday, Sept. 25	Brighton	Home
Thursday, Oct. 2	South Lyon	Away
Tuesday, Oct. 7	Jackson Northwest	Away
Thursday, Oct. 9	Milan	Home
Saturday, Oct. 11	Mason Invitational	
Tuesday, Oct. 14	Dexter	Away
Thursday, Oct. 16	Saline	Home
Saturday, Oct. 18	Manchester Invitational	
Wednesday, Oct. 22	League Meet	
Saturday, Oct. 25	Regional Meet	
Saturday, Nov. 1	State Meet	

\*Conference Meets.

All home dual meets start at 4:30 at Inverness Country Club.



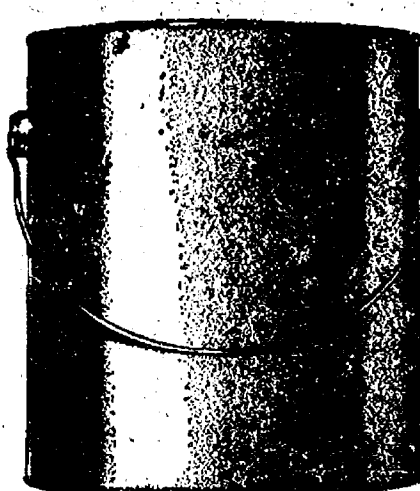
EARLY WILLIAM (RED) APPLES, \$6 bu. Plums, Peaches, MacIntosh Apples by ordering

Varieties of apples ripening soon after Labor Day gives all-around fall North Lake Orchard fruit enjoyment with the '76 spirit.

### NORTH LAKE ORCHARD

13260 North Territorial Rd. (5 miles north of Chelsea)  
DR. HARMON J. WEBB

Closed on Thursdays Phone 475-2070



Painting this weekend?



This is the label to look for. It's around the paint that washes, washes and washes

It's Dutch Boy's remarkable Nalplex. The latex flat wall paint that's not only just washable, it's odorless. Quick-drying. And covers in just one coat. More important, Nalplex doesn't change color. Which means your walls stay looking fresh and bright. Which is what you want. Right?

You will remember the quality of Dutch Boy paints long after the price is forgotten.

**MERKEL**  
Home Furnishings

## LLOYD BRIDGES

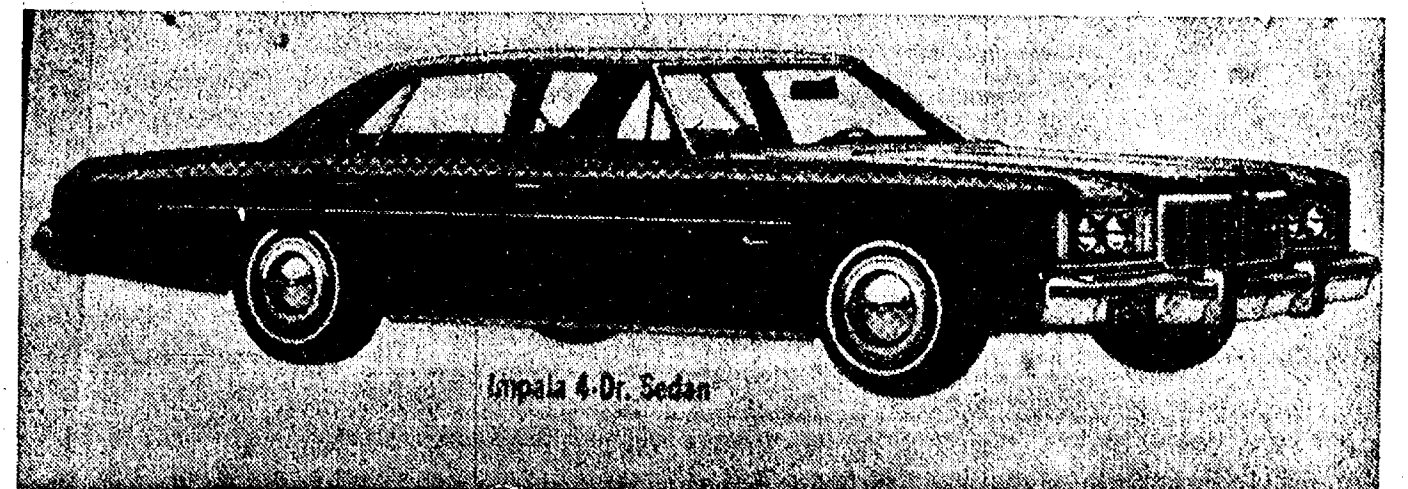
Chevrolet CHEVROLET Chevrolet

*Has Declared War on Inflation and High Prices!*

See the inflation fighters and save hundreds of dollars on the new car or truck of your choice.

E.P.A. tests rate the economical Impala Sedan at 18 mpg for country driving.

1975 IMPALA 4-DR. SEDAN



Above vehicle includes the following equipment: Hydramatic transmission, V-8 engine, power steering, power brakes, air conditioning, deluxe seat belts, tinted glass, floor mats, door edge guards, remote mirror, cruise control, wheel covers, radial white wall tires, vinyl roof.

STOCK NO. 1771  
LIST PRICE \$5407 **OUR PRICE: \$4495**

We have 14 Impala Sedans and Wagons in stock to choose from.

SEE THE INFLATION FIGHTERS  
NOW AND SAVE \$\$

**LLOYD BRIDGES**  
**CHEVROLET**

"For Quality, Service and Price"

405 N. MAIN - CHELSEA

SALES HOURS:

Monday ..... 8 a.m. to 8:30 p.m.  
Tuesday thru Friday ..... 8 a.m. to 6 p.m.  
Saturday ..... 8 a.m. to 5 p.m.

PHONE  
**475-1373**

## SALE

10W-30  
QUAKER STATE  
or PENZOIL  
MOTOR OIL  
**69¢ qt.**

20-FT.  
FREEZER  
Reg. \$329.95  
**\$289<sup>95</sup>**

5 H.P. TILLER  
Was \$305.95  
NOW **\$240<sup>95</sup>**

PRESTONE 14-FT. NO-FROST  
REFRIGERATOR  
Reg. \$4.95 gal.  
**\$4.19 gal.**  
Was \$369.95  
Now **\$299<sup>95</sup>**

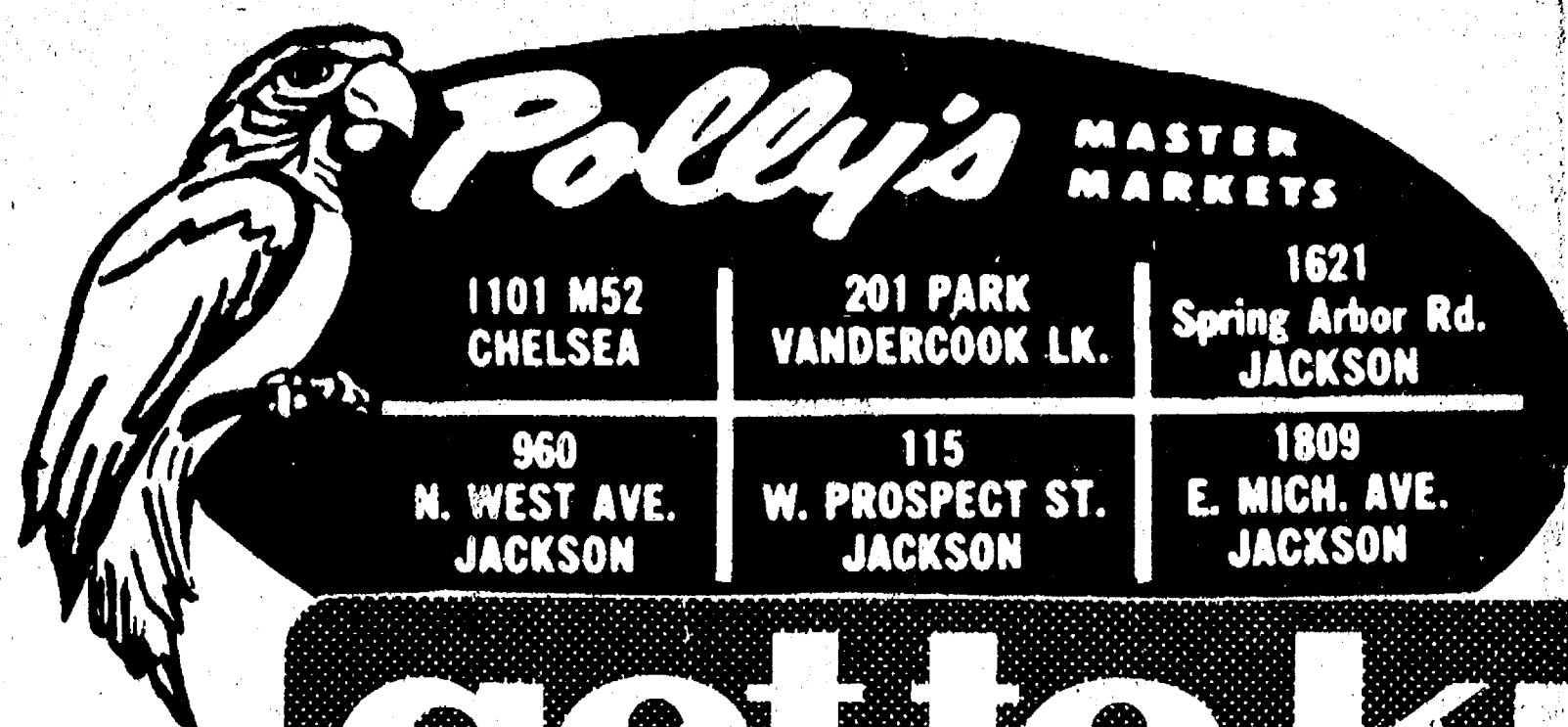
6 H.P. RIDING MOWER  
Reg. \$485.95  
NOW **\$385<sup>95</sup>**

HIGH DETERGENT 25"  
MOTOR OIL COLOR TV  
20 or 30 W  
Reg. \$589.95  
**63¢ qt.** **\$419<sup>95</sup>**

3 H.P. TILLER  
Was \$245.95  
NOW **\$185<sup>95</sup>**

**WESTERN AUTO**  
178 S. MAIN ST. PH. 475-1721





# get to know us...

WE CAN HELP YOU SAVE ON YOUR FOOD BILL!

**OPEN .** **8** A.M. TO **10** P.M.  
**DAILY.**

**OPEN** **9** A.M. TO **6** P.M.  
**SUNDAY:**

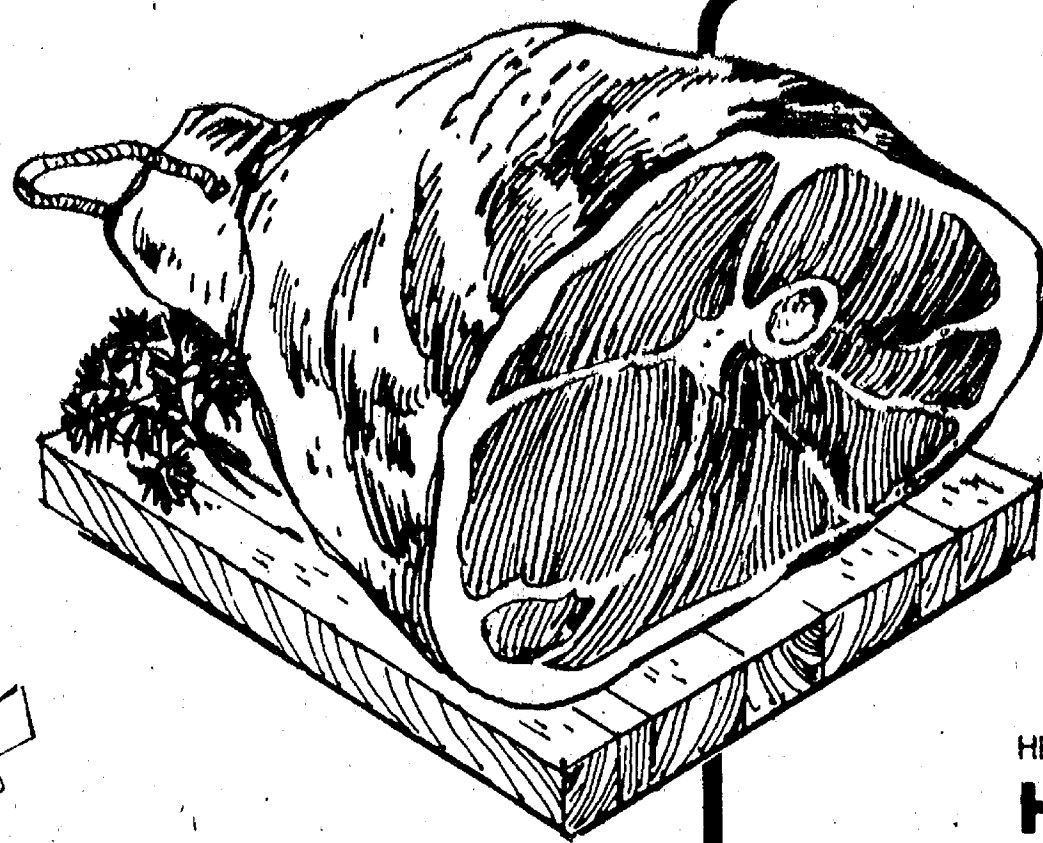
- ★ **QUALITY PRODUCE**
- ★ **QUALITY MEAT**
- ★ **COLD BEER & WINE**
- ★ **LOTTERY TICKETS**
- ★ **SIDES OF BEEF**
- ★ **FRUIT BASKETS**
- ★ **DRY CLEANING**
- ★ **PHOTO PROCESSING**
- ★ **VARIETY AT LOW PRICES**





# BACK TO SCHOOL

## SUPER SAVINGS!



HERRUD SEMI-BONELESS

**WHOLE  
HAM**

**\$1.25** LB.

Water Added For Curing Process

HERRUD SEMI-BONELESS

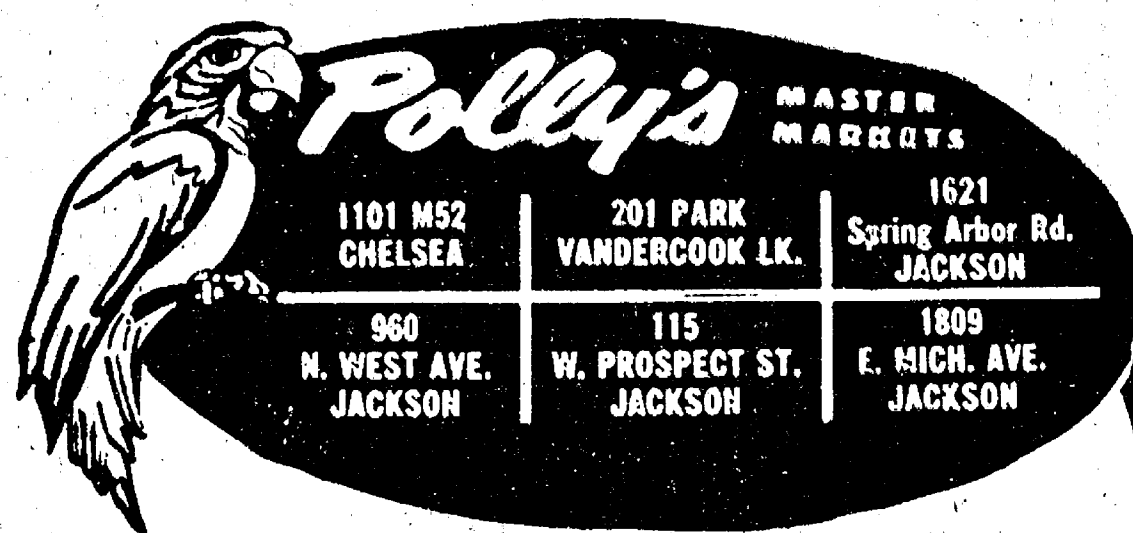
**HALF  
HAM**

**\$1.35** LB.

HICKORY SMOKED

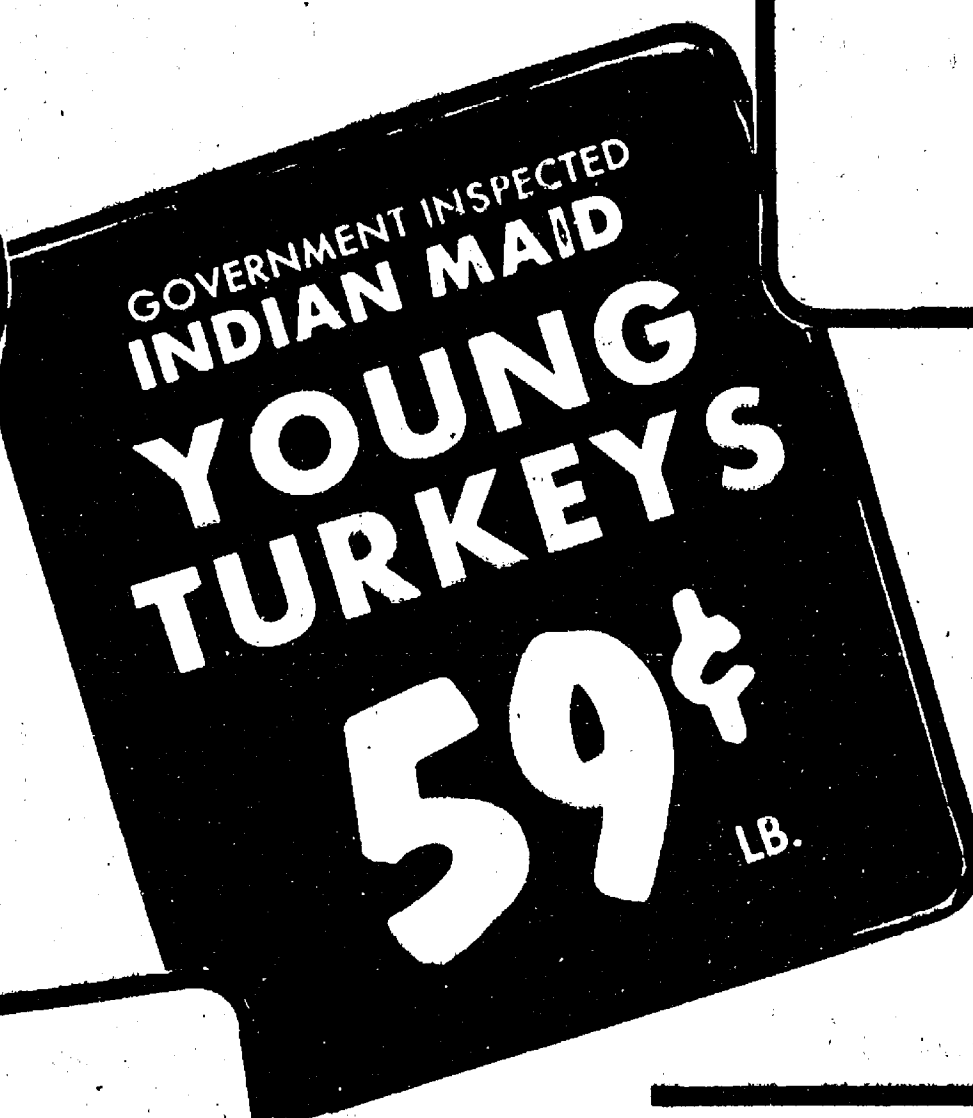
**HAM  
SLICES**

**\$1.79** LB.

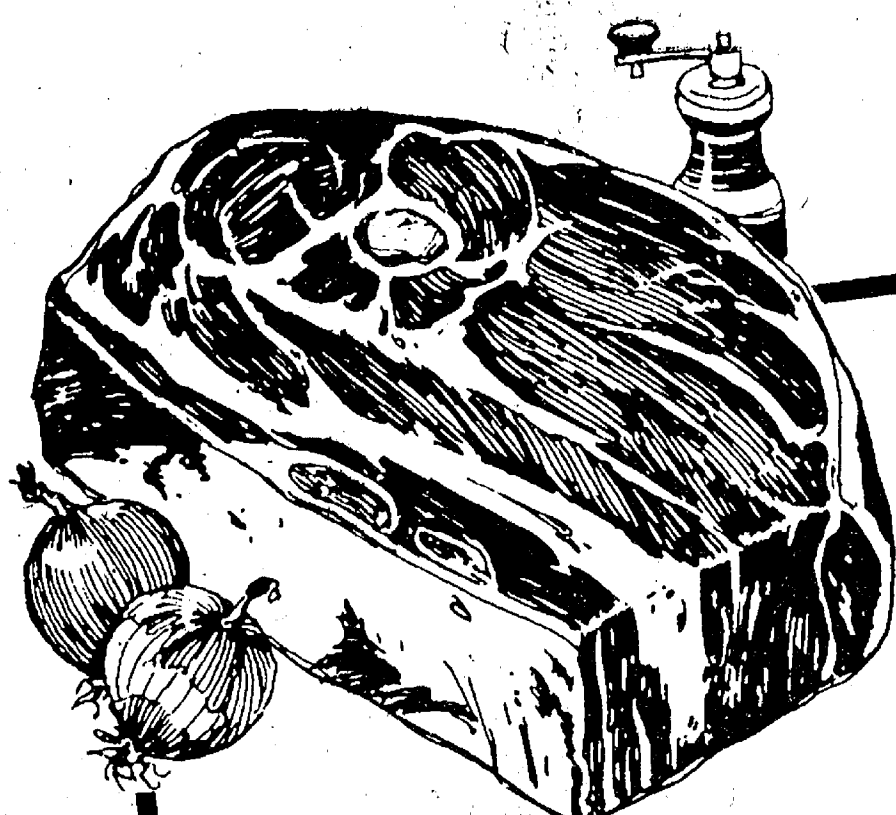


OPEN DAILY 8 A.M. 'TIL 10 P.M.  
and SUNDAY 9 A.M. 'TIL 6 P.M.

We Reserve the Right to Limit Quantities



LEAN and MEATY  
**SPARE  
RIBS**  
**\$1.29** LB.



POLLY'S PRIDE QUALITY BEEF  
**BONELESS  
CHUCK ROAST**

**99¢** LB.

POLLY'S PRIDE QUALITY  
**ARM-CUT SWISS STEAK**

**\$1.09** LB.

POLLY'S PRIDE BONELESS CHUCK  
**ENGLISH CUT ROAST**

**\$1.09** LB.

POLLY'S PRIDE LEAN  
**SHORT RIBS**

**79¢** LB.

POLLY'S PRIDE LEAN  
**BONELESS BEEF STEW**

**\$1.29** LB.

POLLY'S PRIDE QUALITY  
**GROUND BEEF CHUCK**

**93¢** LB.

POLLY'S PRIDE QUALITY  
**CUBE STEAK**

**\$1.59** LB.

SWIFT PREMIUM SLICED

**BEEF LIVER**

**69¢** LB.

FARMER PEET'S

**BEEF FRANKS**

**99¢** LB.

POLLY'S PRIDE QUALITY CUBED

**PORK CUTLETS**

**\$1.59** LB.

POLLY'S PRIDE QUALITY

**CITY CHICKEN**

**\$1.39** LB.

POLLY'S PRIDE QUALITY BULK

**BREAKFAST SAUSAGE**

**99¢** LB.

HERRUD

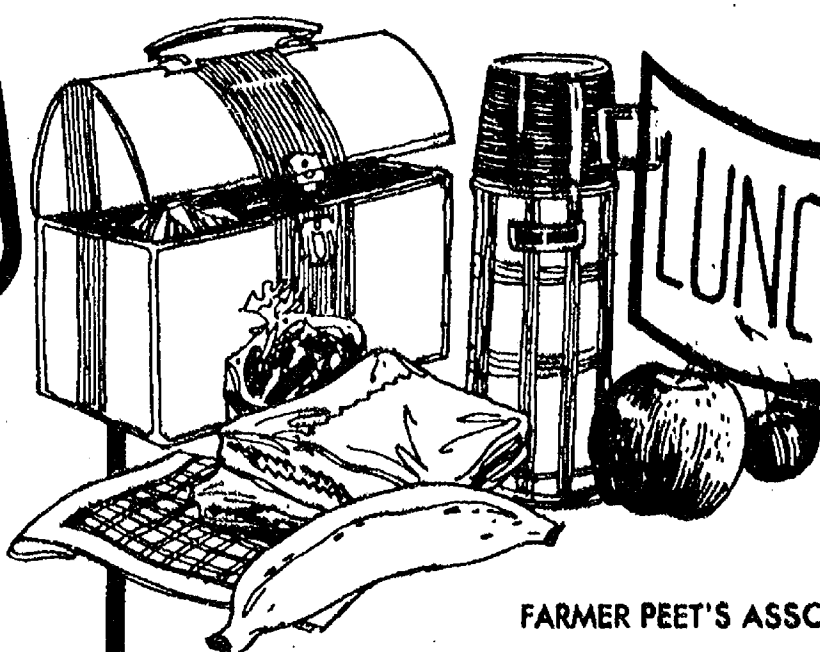
**SLICED BACON**

12-oz. **\$1.59** pkg.

HERRUD PORK

**LINK SAUSAGE**

**\$1.49** LB.



**LUNCH BOX SANDWICH SPECIALS**

SAVE 40¢ W/IN-STORE COUPON

FARMER PEET'S ASSORTED SLICED

**LUNCH MEAT**

**99¢** LB.

POLLY'S HOMESTYLE

**SANDWICH  
SPREAD**

**79¢** LB.

WISCONSIN COLBY

**LONGHORN  
CHEESE**

**\$1.39** LB.

FRESH HOMESTYLE

**POTATO  
SALAD**

**69¢** LB.

*Mix or Match!*

BULK  
**PICKLE LOAF,  
OLIVE LOAF,  
MACARONI & CHEESE  
or BOLOGNA**

**\$1.29** LB.

ALPINE BAKE HAUS, FRESH DAILY . . .

## Bakery Bargains

PLAIN  
CAKE  
DONUTS

**79¢** DZ.

DATE  
HERMIT  
COOKIES

**89¢** DZ.

HOME  
STYLE  
BREAD

**39¢** LF.

FRESH  
DINNER  
ROLLS

**59¢** DZ.





SAVE 48c W/ BONUS COUPON

8-PAK  
COCA-COLA

16-oz.  
N.R.

\$1.37

King  
Size

SAVE 40c W/ BONUS COUPON

POLLY'S  
WHITE  
BREAD

24-oz.  
Loaves

3.99¢

SAVE 50c W/ BONUS COUPON

BORDEN'S  
ICE  
MILK

Gal.

1.19

SAVE 20c W/ IN-STORE COUPON

POLLY'S  
POTATO  
CHIPS

10-oz.  
Bag

49¢

SAVE 14c

PETER PAN  
PEANUT  
BUTTER

18-oz.

77¢



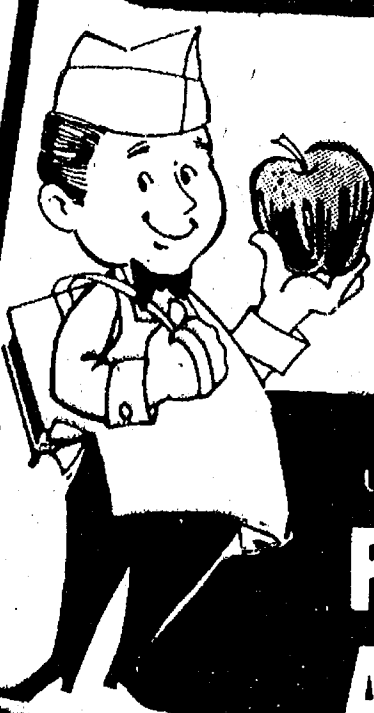
PRODUCE  
SPECIALS

U.S. NO. 1 MICHIGAN  
YELLOW  
ONIONS

3-Lb.  
Bag

59¢

with in-store coupon



MICHIGAN  
PASCAL CELERY  
CALIFORNIA 88 SIZE

29¢ EA.

VALENCIA ORANGES

10 for 89¢

BARTLETT PEARS

29¢ LB.

U.S. NO. 1 MICHIGAN

FENTON  
APPLES

3-Lb.  
Bag

59¢

SAVE 24c  
W/ IN-STORE  
COUPON

ROYAL  
GELATIN

3 \$1

6-oz.  
Boxes

SAVE 18c  
W/ IN-STORE  
COUPON

HELLMAN'S SPIN BLEND  
SALAD  
DRESSING

32-oz.

77¢

SAVE 90c  
W/ IN-STORE  
COUPON

VETS  
DOG  
FOOD

25-Lb.

\$3.99

SAVE 24c  
W/ IN-STORE  
COUPON

CHEF'S DELIGHT  
CHEESE  
SPREAD

2-Lb.

99¢

MAGIC  
PRE-WASH  
16-oz. 79¢

SEVEN SEAS ASSORTED

SALAD  
DRESSINGS

2 8-oz. Bottles

89¢

PILLSBURY EXTRA-LITE

PANCAKE  
MIX

2-Lb.  
Box

59¢

8 VARIETIES

BANQUET DINNERS

2 10-12 oz. 89¢

MARCAL  
FACIAL  
TISSUES

3 200-CT. Boxes

\$1

VOGUE  
BATHROOM  
TISSUE

3 2-roll Pak

\$1

SAVE 17c W/ IN-STORE COUPON

SOFT STICK CHIFFON

MARGARINE

2 1-Lb. 89¢

more DAIRY features

SAVE 10c W/ IN-STORE COUPON ... SEATEST

COTTAGE CHEESE

12-oz. 39¢

SAVE 14c W/ IN-STORE COUPON ... SOFT

FLEISCHMANS MARGARINE

1-Lb. 65¢

FRIGO  
MOZZARELLA  
CHUNKS

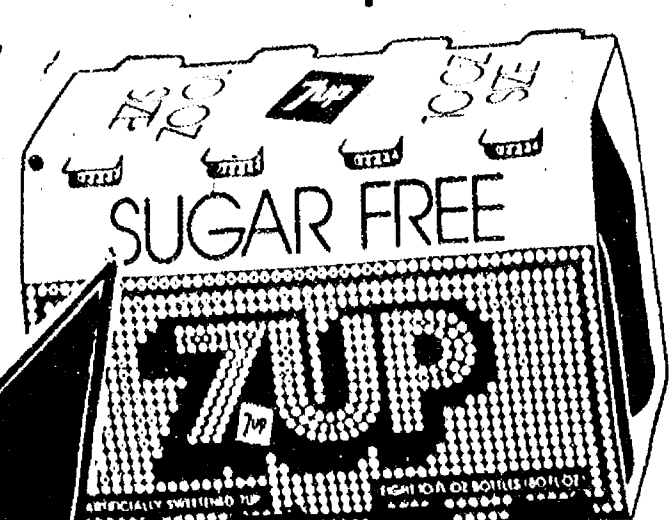
1-Lb. \$1.29

FRIGO  
SHREDDED  
MOZZARELLA

12-oz. 99¢

Save

WITH THESE BONUS  
COUPONS &  
POLLY'S IN-STORE  
COUPONS



FINE CHINA

This Weeks Feature ...

VEGETABLE BOWL

\$6.99

with coupon





# Thank You

FOR SHOPPING AT...



WHERE WE ARE  
HAPPY TO.....

**save** YOU MONEY!